



Targeting Gold Growth & Copper Discovery

Investor Presentation | February 2025

ASX: TTM



[TITANMINERALS.COM.AU](https://www.titanminerals.com.au)



Disclaimer and Forward-Looking Statements

COMPETENT PERSON'S STATEMENTS

The information in this report that relates to Exploration Results is based on and fairly represents information compiled by Ms Melanie Leighton, who is an experienced geologist and a Member of The Australian Institute of Geoscientists. Ms Leighton is a full-time employee at Titan Minerals and has sufficient experience which is relevant to the style of mineralisation and type of deposits under consideration and to the activity which she is undertaking to qualify as a Competent Person as defined in the JORC 2012 Edition of the 'Australasian Code for Reporting of Exploration Results, Mineral Resources, and Ore Reserves'. Ms Leighton consents to their inclusion in the report of the matters based on this information in the form and context in which it appears.

With respect to estimates of Mineral Resources, announced on 6 July 2023, (MRE Announcement) the Company confirms that it is not aware of any new information or data that materially effects the information in the MRE Announcement and that all material assumptions and technical parameters underpinning the estimates continue to apply and have not materially changed.

Dynasty Project	Indicated					Inferred					Total				
	Tonnes (M)	Grade (g/t)		Contained Metal (Moz)		Tonnes (M)	Grade (g/t)		Contained Metal (Moz)		Tonnes (M)	Grade (g/t)		Contained Metal (Moz)	
		Au	Ag	Au	Ag		Au	Ag	Au	Ag		Au	Ag		
Cerro Verde	15.17	2.01	13.51	0.98	6.59	13.63	2.15	12.44	0.94	5.45	28.80	2.08	13.00	1.92	12.04
Iguana	2.41	2.36	16.08	0.18	1.25	8.52	1.92	13.00	0.53	3.56	10.93	2.02	13.68	0.71	4.81
Trapichillo	0.05	1.89	9.28	0.00	0.01	2.89	3.83	39.80	0.36	3.70	2.94	3.80	39.31	0.36	3.71
Papayal	0.46	3.04	48.24	0.05	0.72	0.41	6.24	53.80	0.08	0.71	0.87	4.54	50.85	0.13	1.43
Total	18.09	2.09	14.73	1.21	8.57	25.44	2.33	16.40	1.90	13.41	43.54	2.23	15.70	3.12	21.98

Notes: 1. Reported ≥ 0.5 g/t Au. 2. Some rounding errors may be present. 3. Tables are rounded as the final steps. Totals are not calculated after rounding. 4. M – million. Oz – ounce. g/t – grams per tonne.

COPPER EQUIVALENT (CU EQ) VALUES – REQUIREMENTS UNDER THE JORC CODE

Assumed commodity prices for the calculation of Copper Equivalent (Cu Eq) is Cu US\$3.00/lb, Au US\$1,700/oz, Mo US\$14/lb and Ag US\$20/oz. Recoveries are assumed from similar deposits: Cu = 85%, Au = 65%, Ag = 65%, Mo = 80%. Cu Eq (%) was calculated using the following formula: $((Cu\% \times Cu \text{ price } 1\% \text{ per tonne} \times Cu \text{ recovery}) + (Au(g/t) \times Au \text{ price per g/t} \times Au \text{ recovery}) + (Mo \text{ ppm} \times Mo \text{ price per g/t} \times Mo \text{ recovery}) + Ag \text{ ppm} \times Ag \text{ price per g/t} \times Ag \text{ recovery}) / (Cu \text{ price } 1\% \text{ per tonne} \times Cu \text{ recovery})$. $Cu \text{ Eq} (\%) = Cu (\%) + (0.54 \times Au (g/t)) + (0.00037 \times Mo (ppm)) + (0.0063 \times Ag (ppm))$. TTM confirms that it is the Company's opinion that all the elements included in the metal equivalents calculation have a reasonable potential to be recovered and sold.

SUMMARY INFORMATION

This document contains a summary of information about Titan and its activities that is current as at the date of this document. The information in this document is general in nature and does not purport to be complete or to contain all the information which a prospective investor may require in evaluating a possible investment in Titan or that would be required in a prospectus or a product disclosure statement prepared in accordance with the Corporations Act 2001 (Cth) (Corporations Act).

NOT AN OFFER OF SECURITIES

This presentation has been prepared by Titan Minerals Limited ("Titan" or the "Company") and is provided for informational purposes only. This presentation does not constitute or contain an offer, invitation, solicitation or recommendation with respect to the purchase or sale of any securities of Titan. This presentation does not constitute an offer to sell, or a solicitation of an offer to buy, any securities in any jurisdiction (in particular, the United States), or a securities recommendation. This presentation is not a prospectus, product disclosure statement or other offering document under Australian law or any other law and will not be lodged with the Australian Securities and Investments Commission.

NOT FINANCIAL PRODUCT ADVICE

This presentation does not constitute financial product advice and does not consider any investor's personal investment objectives, taxation situation, financial situation or needs. This presentation consists purely of factual information and does not involve or imply a recommendation of a statement of opinion in respect of whether to buy, sell or hold a financial product. An investment in Titan is considered to be speculative in nature. Before making any investment decision in connection with any acquisition of securities, investors should consult their own legal, tax and/or financial advisers in relation to the information in, and action taken on the basis of, this presentation.

NO LIABILITY

To the extent permitted by law, Titan makes no guarantee representation or warranty express or implied as to the accuracy, reliability, correctness, completeness or adequacy of any statements, estimates, options, conclusions or other information contained in this presentation. To the maximum extent permitted by law, Titan and each of its affiliates and its directors, officers, employees, associates, advisers and agents expressly disclaims any and all liability, including, without limitation, any liability arising out of fault or negligence, for any loss arising from the use of or reliance on information contained in this presentation including representations or warranties or in relation to the accuracy or completeness of the information, statements, opinions, forecasts, reports or other matters, express or implied, contained in, arising out of or derived from, or for omissions from, this presentation including, without limitation, any financial information, any estimates or projections and any other financial information derived therefrom. Statements in this presentation are made only as of the date of this presentation unless otherwise stated and the information in this presentation remains subject to change without notice. To the extent permitted by law, no responsibility or liability is assumed by Titan or any of its affiliates and its directors, officers, employees, associates, advisers and agents for updating any information in this presentation or to inform any recipient of any new or more accurate information or any errors or mis-descriptions of which Titan and any of its affiliates or advisers may become aware.

FORWARD LOOKING STATEMENTS

Certain information in this document refers to the intentions of Titan, but these are not intended to be forecasts, forward looking statements or statements about the future matters for the purposes of the Corporations Act or any other applicable law. The occurrence of the events in the future are subject to risk, uncertainties and other actions that may cause Titan's actual results, performance or achievements to differ from those referred to in this document. Accordingly, Titan and its affiliates and their directors, officers, employees and agents do not give any assurance or guarantee that the occurrence of these events referred to in the document will actually occur as contemplated.

Statements contained in this document, including but not limited to those regarding the possible or assumed future costs, performance, dividends, returns, revenue, exchange rates, potential growth of Titan, industry growth or other projections and any estimated company earnings are or may be forward looking statements. Forward-looking statements can generally be identified by the use of words such as 'project', 'foresee', 'plan', 'expect', 'aim', 'intend', 'anticipate', 'believe', 'estimate', 'may', 'should', 'will' or similar expressions. These statements relate to future events and expectations and as such involve known and unknown risks and significant uncertainties, many of which are outside the control of Titan. Actual results, performance, actions and developments of Titan may differ materially from those expressed or implied by the forward-looking statements in this document.

Such forward-looking statements speak only as of the date of this document. There can be no assurance that actual outcomes will not differ materially from these statements. To the maximum extent permitted by law, Titan and any of its affiliates and their directors, officers, employees, agents, associates and advisers:

- disclaim any obligations or undertaking to release any updates or revisions to the information to reflect any change in expectations or assumptions;
- do not make any representation or warranty, express or implied, as to the accuracy, reliability or completeness of the information in this document, or likelihood of fulfilment of any forward-looking statement or any event or results expressed or implied in any forward-looking statement; and
- disclaim all responsibility and liability for these forward-looking statements (including, without limitation, liability for negligence).

ACCEPTANCE

By attending an investor presentation or briefing, or accepting, accessing or reviewing this document you acknowledge and agree to the "Disclaimer" as set out above.

AUTHORISATION

Released with the authority of the board of Titan Minerals Ltd.



Investment Highlights

Near-term gold developer & copper explorer with strong funding

Emerging Gold-Silver Developer- targeting +5Moz gold resource



3.1Moz Gold & 22Moz Silver resource established
10,000m drilling program underway targeting resource growth

JV Partner Secured for Linderos Copper Project



Hancock Prospecting to spend up to US\$120M to acquire 80% **look through value of A\$220M** (100% basis)
10,000m drilling campaign underway to earn 25%

First Mover Advantage with Optionality



World class copper-gold project portfolio in highly prospective, under-explored Andean Copper Belt

Emerging Tier 1 Mining Jurisdiction

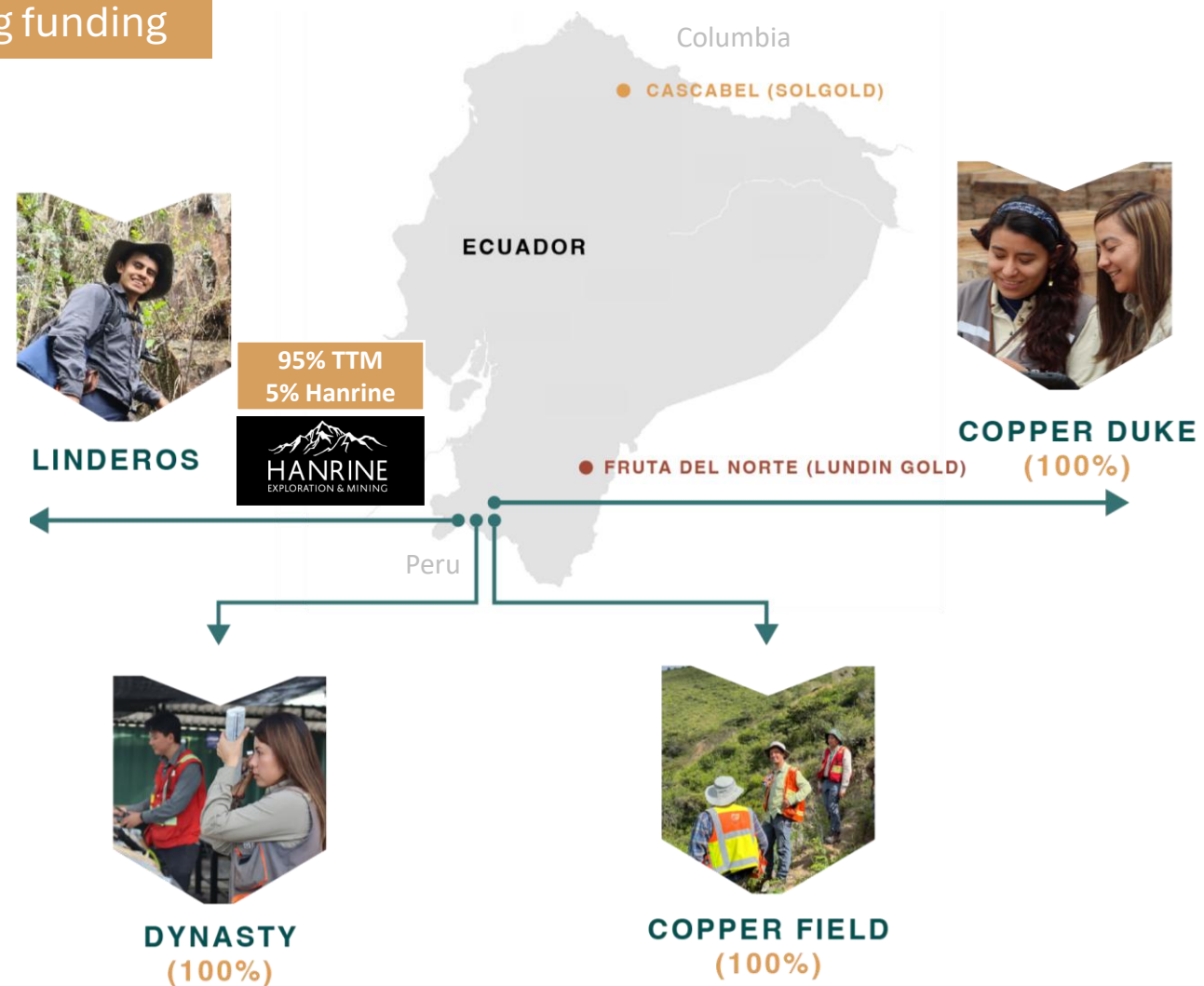


Ecuadorian government supportive of mining, with significant support and fiscal incentives

Management with Proven Capability



Experienced board and capability to deliver value through discovery and development across **multiple projects**





Corporate Snapshot

Strong balance sheet provides clear pathway for growth and development

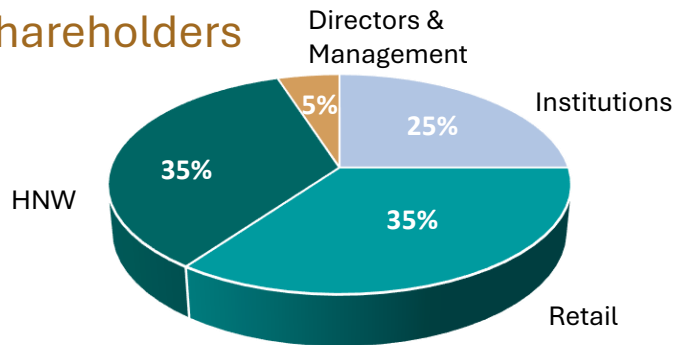
Capital Structure (AUD)

ASX	TTM
Share Price	\$0.45
Shares on Issue	260 M
Options	17.3 M @ \$0.70, exp 31 Jan 27
Market Cap	\$110M \$125M (fully dilute)
52 week low/high	\$0.17/\$0.63
Average volume (90 days)	450K
Cash	\$18.8M at 31 Dec 2024 +\$4.9M at 7 Feb 2025, from issue of New Shares (conversion of \$0.35 options)

Share Price



Shareholders



- **Strong institutional backing**
- **74 % held by Top 20 shareholders**

One of the best performing ASX junior explorers in 2024

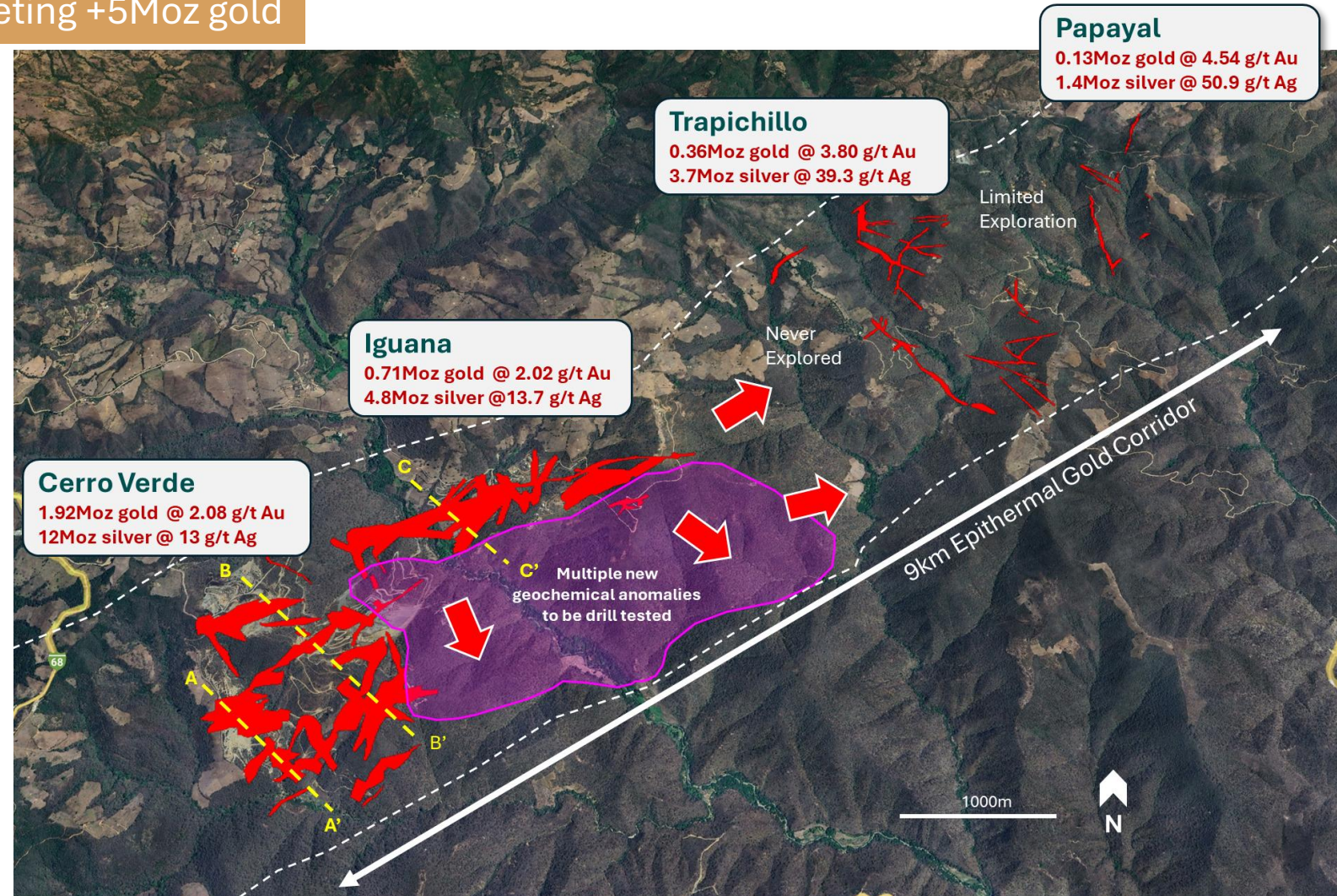


Dynasty Gold Project

3.1Moz gold resource established, targeting +5Moz gold

- 9km epithermal gold corridor hosting substantial resource of **3.12Moz gold and 22Moz silver @ 2.23g/t Au, 15.7g/t Ag* from surface** (reported > 0.5 g/t Au)
- High-grade resources of **2Moz gold and 13Moz silver @ 3.8 g/t Au, 24g/t Ag** (reported > 2.0 g/t Au)
- **+50% resources (1.6Moz)** in top 100m, **+80% resources (2.5Moz)** in top 200m
- 39% Indicated, 61% Inferred
- **Entire 9km system proven to be mineralised, but less than half drilled!**

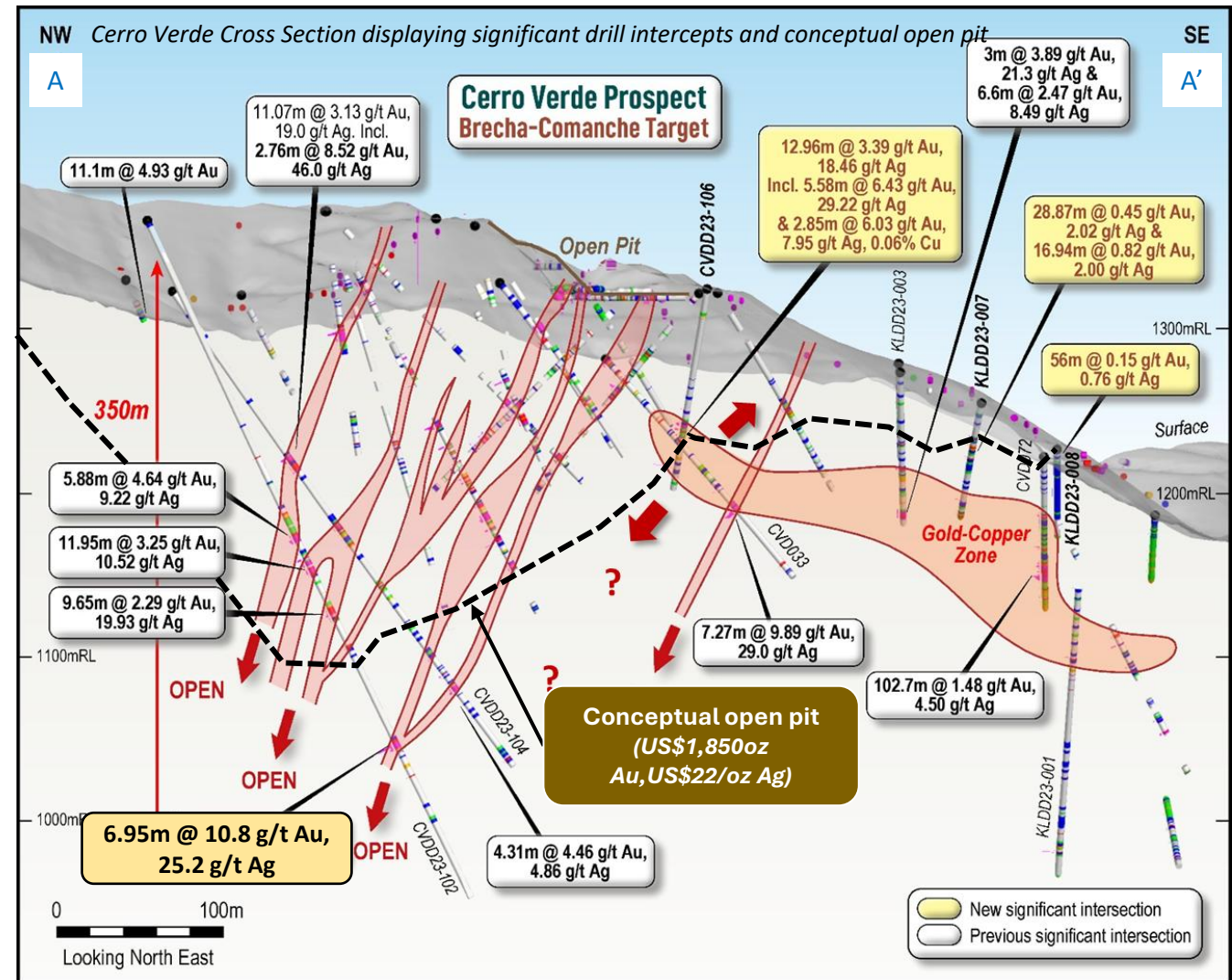
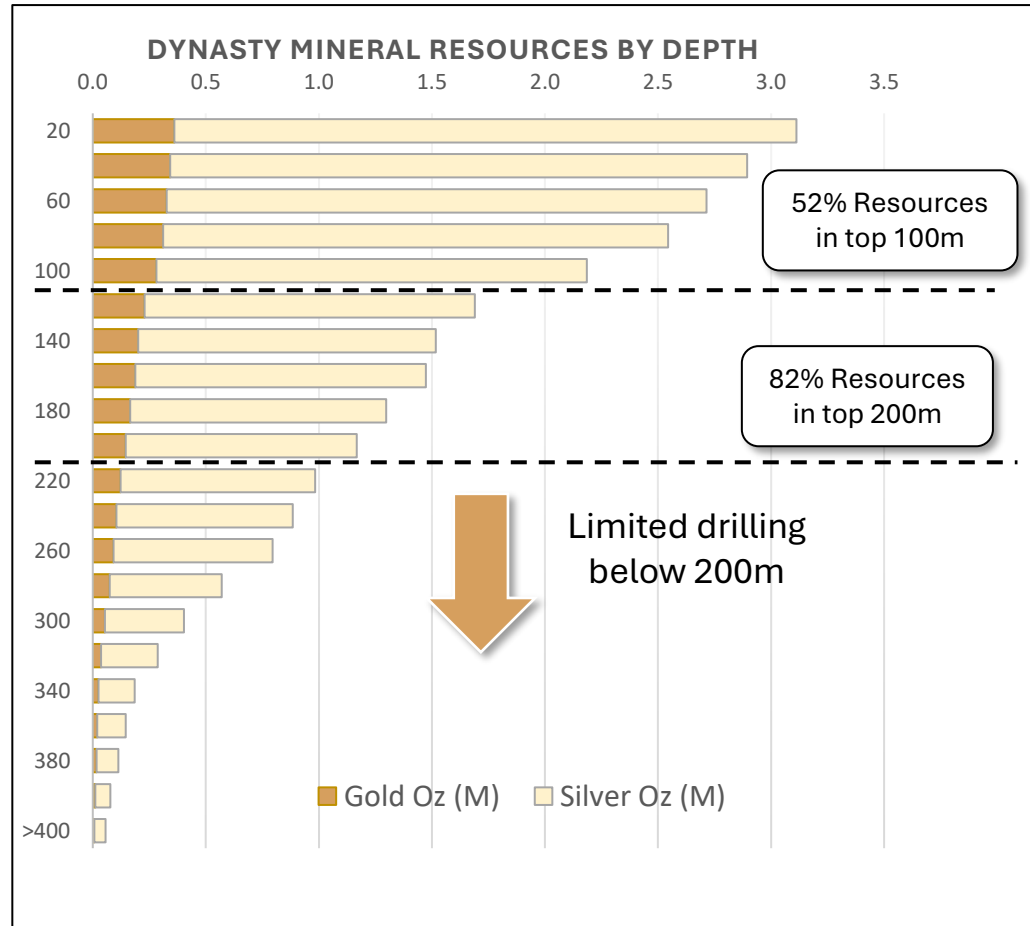
Classification	Tonnes (Million)	Grade (g/t)		Contained Ounces (Million)	
		Gold	Silver	Gold	Silver
Indicated	18.1	2.09	14.7	1.2	8.6
Inferred	25.4	2.33	16.4	1.9	13.4
Total	43.5	2.23	15.7	3.1	22.0





Dynasty Gold Project

Strong potential to grow resources at depth

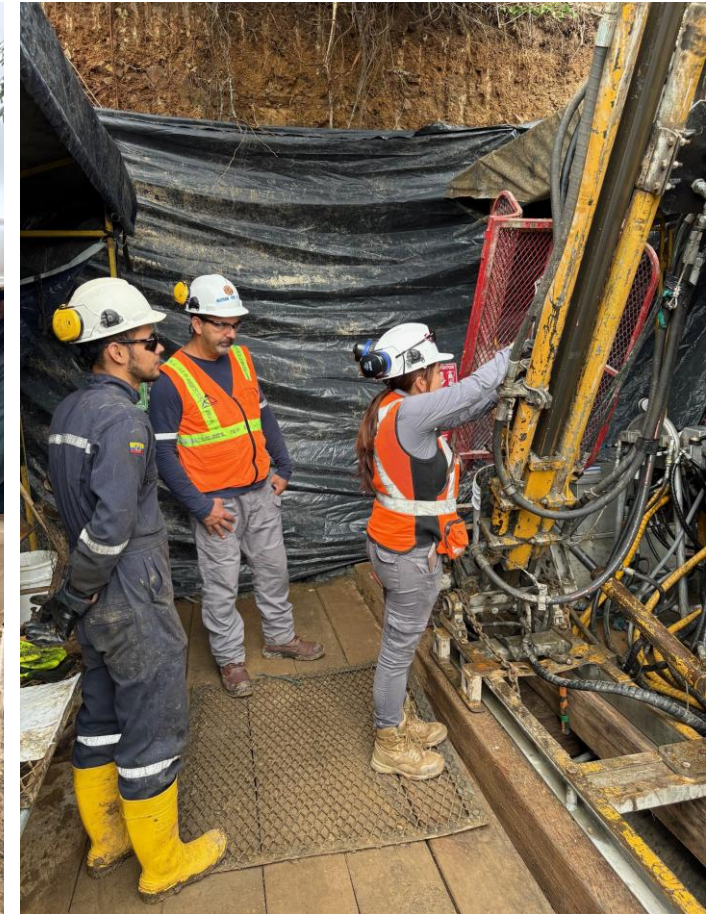




Dynasty Gold Project

Resource growth drilling underway

- **10,000m drilling campaign underway** to test:
 - **Resource extensions** - Cerro Verde and Iguana
 - **Multiple exciting targets** revealed by surface geochemistry and confirmed by mapping, rock chips and trenches
 - **Resource upgrade/** conversion through improved geological confidence
- Steady flow of drill results expected in the coming months ahead
- **Resource update targeted for mid-2025**

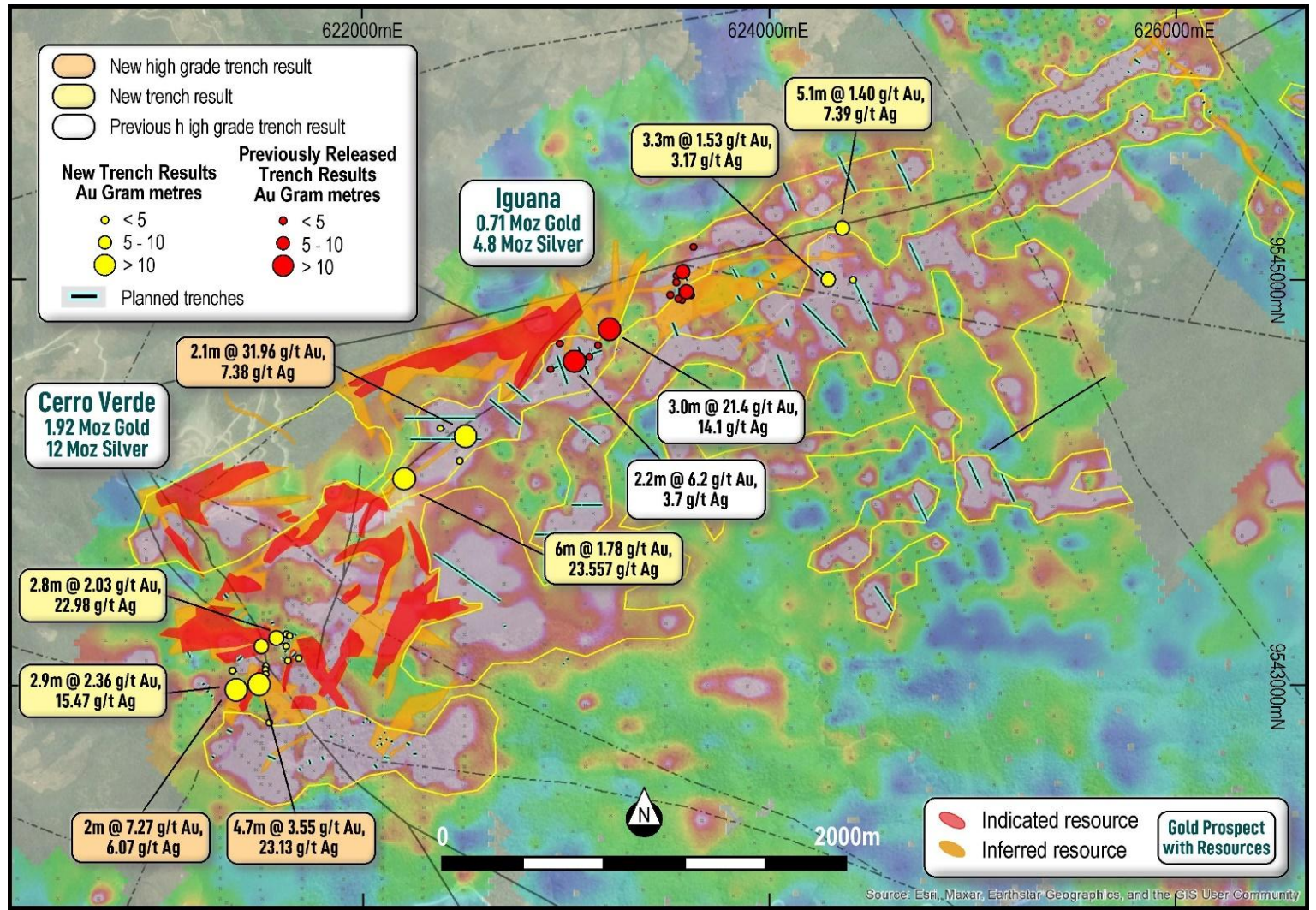




Dynasty Gold Project

Gold footprint continues to grow

- Soil geochemistry has highlighted **Dynasty mineralisation footprint to be much larger** than area of current drill defined resources
- Trenching over new geochemical anomalies has provided **confirmation of mineralisation** with significant results in new areas including:
 - 3.0m @ 21.4 g/t Au at Iguana
 - 2.1m @ 32.0 g/t Au at Cerro Verde
- Trenching and mapping is continuing across new target areas, with results to inform exploration drilling



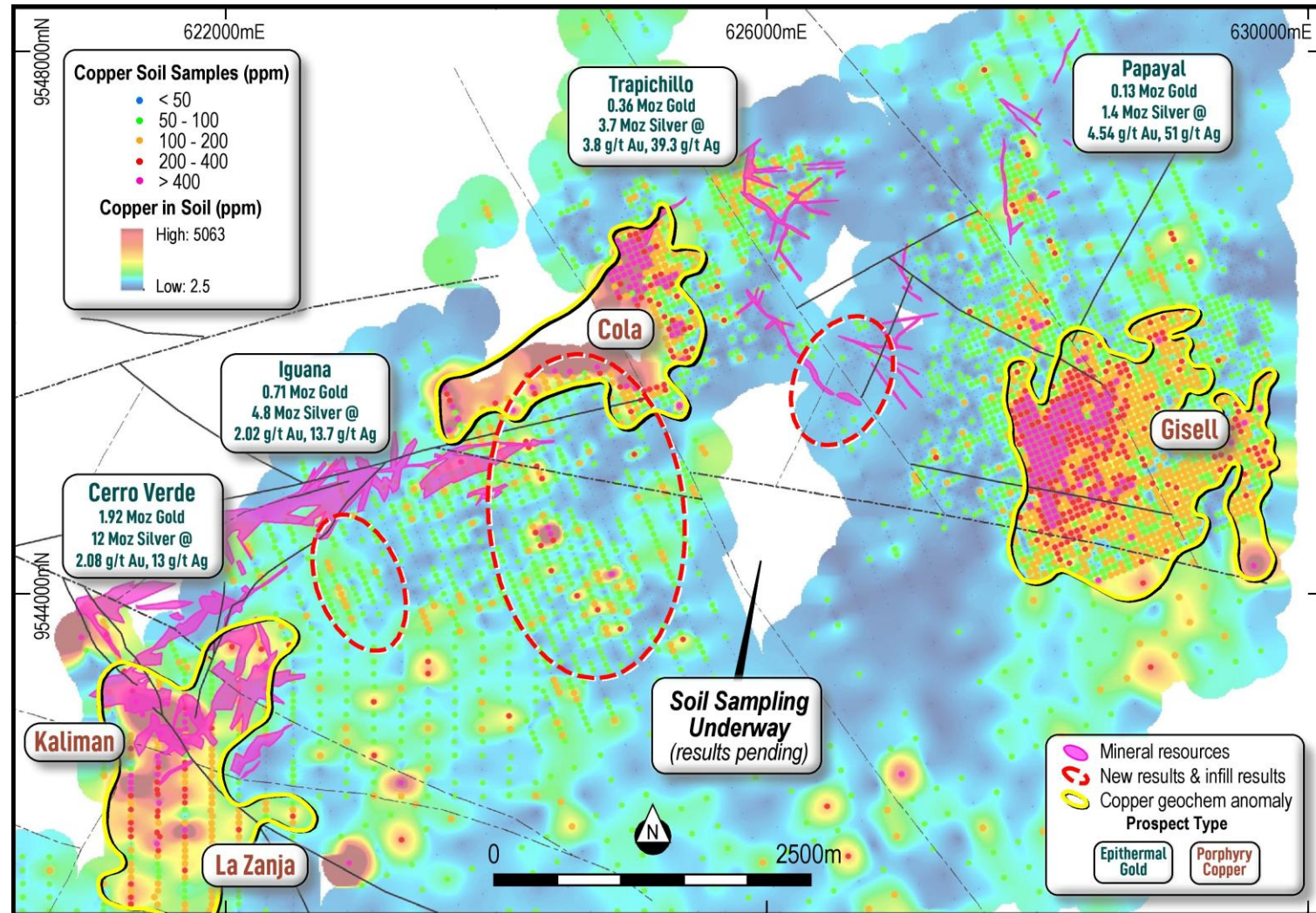
Substantial potential for further gold mineralisation highlighted outside of current resource



Dynasty Gold Project

New copper porphyry targets unveiled

- **Large-scale soil anomalies** have revealed several compelling **porphyry copper targets**
- Mapping has confirmed porphyry style veining with copper oxide and iron oxide mineralisation at surface
- Cola target exhibits secondary chalcocite enrichment along fractures with abundant disseminated pyrite
- Disseminated chalcopyrite is observed to be predominantly found within massive sulfide veins



Linderos Copper Project

Hancock Prospecting subsidiary to spend up to US\$120M to earn 80%

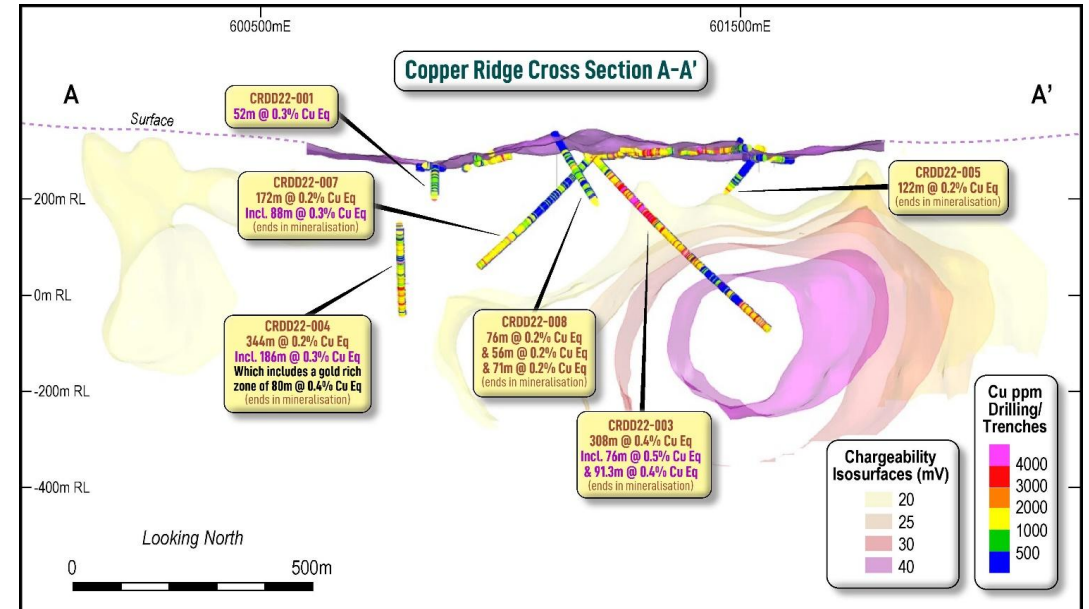


- **Partner secured to explore and develop Linderos**, Hanrine to earn 80% by spending up to US\$120M (A\$180M) or reaching Decision to Mine
- **Titan free-carried until 80% earned**. If Titan elects not to contribute after 80% earned, if diluted < 10%, project ownership will revert to **2.7% NSR**

	Commitment*		% Earned	% Earned (cumulative)	Earn-in Period (years)	Status
	Activities	Expenditure USD				
1	-	\$2M	5%	5%	0	COMPLETE
2	10,000m drilling	\$8M	25%	30%	3	UNDERWAY
3	15,000m drilling	\$12M	21%	51%	7	PENDING
4	Decision to Mine	\$120M	29%	80%	15	PENDING

- Hanrine managing and funding all exploration and development activities
- **10,000 drilling campaign underway with results due soon!**

3D IP Chargeability Model



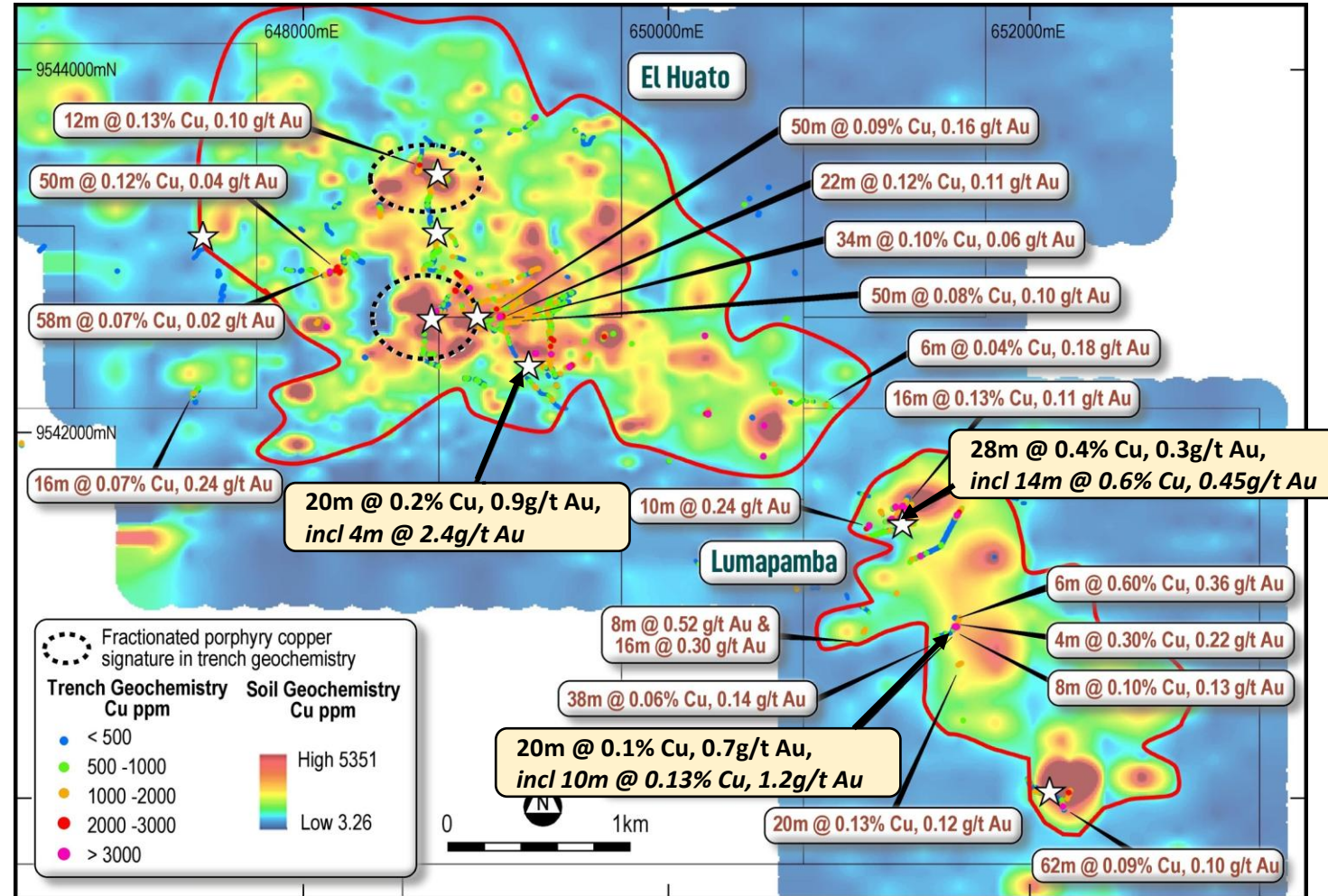
- +2km porphyry copper system confirmed by geophysics, mapping phyllic alteration beyond drill defined porphyry
- Most holes end in mineralisation- system remains open laterally and at depth



Copper Duke Project

Potential tier 1 porphyry copper discovery set to be unveiled

- **7km porphyry alteration footprint** highlighted by multiple datasets
- **Same magma type as global Tier 1 porphyry systems** and mineralisation the same age as **mega-porphyry copper deposits of Peru**
- **Multiple outcropping targets** – porphyry copper, breccia copper, skarn, intrusion related gold, and epithermal gold
- **High priority targets defined**, with drilling permits in place
- **Best technical experts** guiding exploration strategy



Copper Duke Project highlighting soil and trench sample geochemistry (Cu ppm)



Ecuador, Emerging Tier 1 Mining Jurisdiction

Investment in new jurisdictions to meet future metals demand

1. Highly Prospective, Underexplored

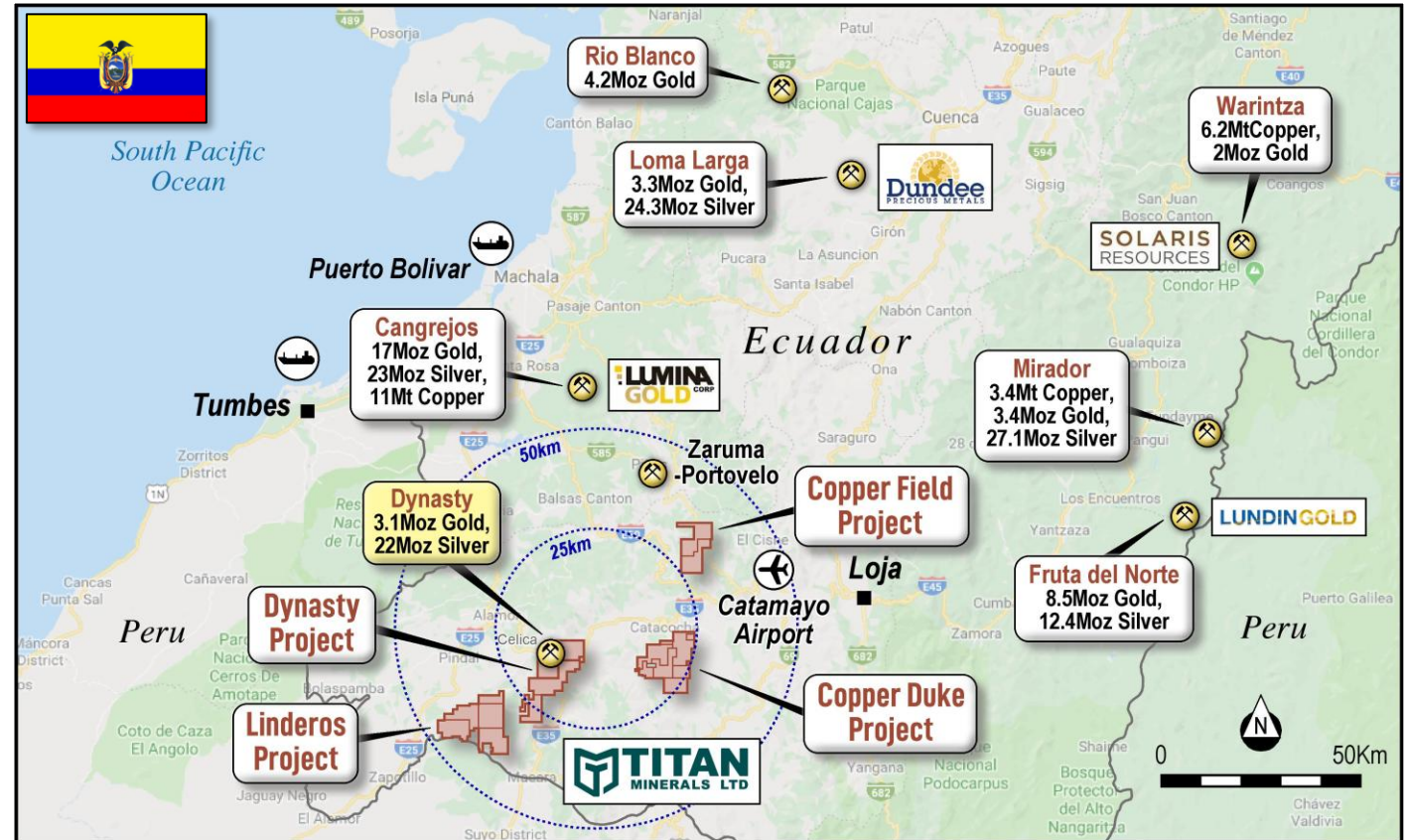
- Optionality and exposure to meaningful scale copper and gold in highly prospective Andean copper belt

2. Good Project Access & Infrastructure

- Low Elevation (~1,100m ASL)
- Exploration year-round
- Infrastructure Rich- hydropower, Pan-American Hwy and Coastal highway network
- Workforce ready

3. Strong Government Support

- Low tax rates, low inflation, fast permitting
- Mining contributes 1-2% GDP, targeting 10-12%
- Several advanced development copper and gold projects





Board & Management Team

Right team assembled to add substantial value through discovery and development



PETER COOK
NON- EXECUTIVE CHAIRMAN
Geologist & Mineral Economist

- +35 years' in exploration, mining and corporate management.
- Founded & served as Managing Director/ Chairman for many successful resource companies.



MATTHEW CARR
EXECUTIVE DIRECTOR
Entrepreneur & Project Developer

- Experienced company director, founder of Urban Capital Group, a PE firm with a focus on property backed investment and security.



BARRY BOURNE
NON-EXEC DIRECTOR
Geologist and Geophysicist

- Founder and Principal Consultant at Terra Resources, specialising in exploration targeting.
- Held senior and management roles with Barrick Gold and Homestake Gold.



MELANIE LEIGHTON
CHIEF EXECUTIVE OFFICER
Geologist & Business Master

- +20 years' experience in exploration, development and mining in precious & base metals.
- Considerable experience in LATAM and porphyry copper.
- Held management and senior roles with Hot Chili Ltd and Harmony Gold.



PABLO MORELLI
EXPLORATION MANAGER

- +20 years' experience in epithermal gold systems and copper-gold porphyry systems.
- Previous roles held with Barrick, Newmont, Kinross and Rio Tinto.
- Experience across Cretaceous, Palaeocene, Eocene-Oligocene and Miocene Belts of Chile and Mexico.



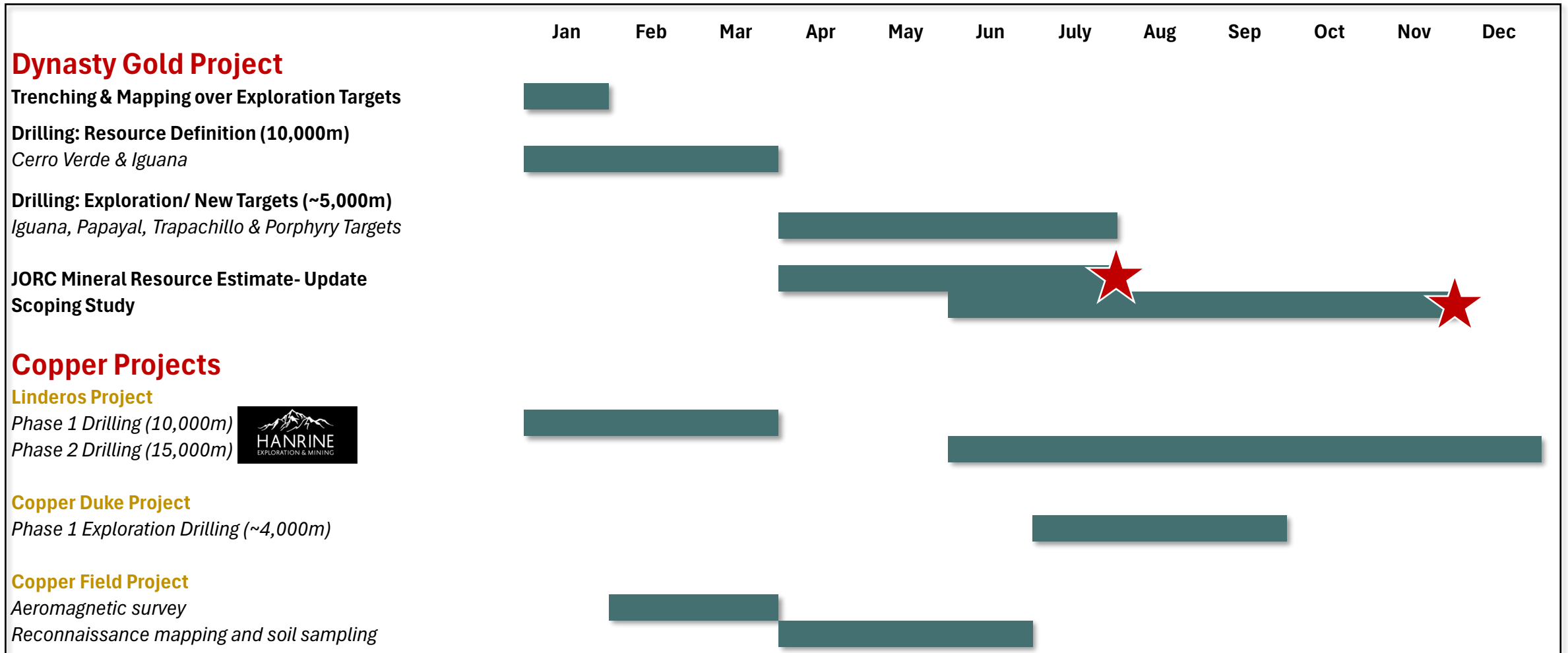
MICHAEL SKEAD
CHIEF TECHNICAL ADVISOR

- + 30 years' experience in exploration, development and mining.
- Former Director of Geoscience in Newmont's Global Projects Team and Former Director of Global Exploration for Goldcorp.
- Significant experience in emerging mining jurisdictions. Spent 1 year in Ecuador building out the team and systems.



2025- A Year of Transformation

Key deliverables- resource growth, derisking and discovery!

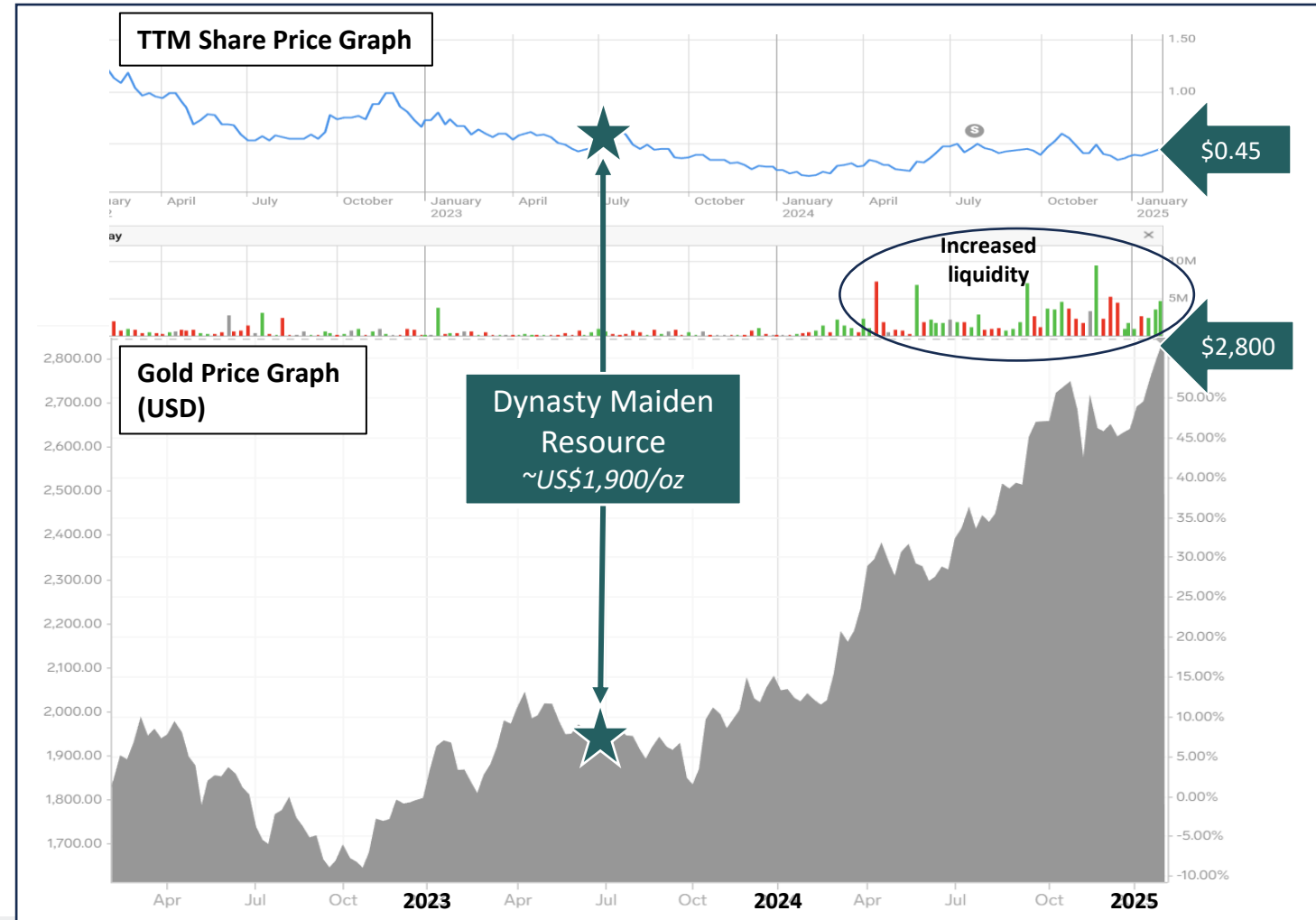




The Value Proposition

Titan, poised for a re-rate with strong funding in place and gold price at all time highs!

- **EV¹ for 3.1Moz Gold Resource is ~US\$22/oz gold**
- **EV for 22Moz Silver Resource is ~US\$0/oz silver**
- **Discovery cost² ~US\$5/oz gold + US\$0/oz silver**
- **Gold and silver price at all time highs - Dynasty resource value is much higher than when resource was published (July 2023 ~ US\$1,900/oz)**
- **NO VALUE ASCRIBED to Hancock Prospecting JV Agreement which values 80% of Linderos Copper Project at US\$120M**
- **Potential for Tier 1 copper porphyry discovery!**
- **Significantly undervalued, and ready to deliver on key milestones in 2025**



1. EV (Enterprise Value is current market cap (\$110M) divided by ounces of gold

2. Cost of "Discovery" is total exploration spend to date on the project, divided by resource ounces



@titanminerals



info@titanminerals.com.au



+61 8 6555 2950



ASX: TTM



TITANMINERALS.COM.AU