

LARAMIDE
RESOURCES LTD.

Bell Potter Unearthed Conference
February 11, 2025

TSX: LAM
ASX: LAM
OTCQX: LMRXF
LARAMIDE.com



Disclaimer

This presentation is provided on the basis that neither the Company nor its representatives or advisors make any warranty (express or implied) as to the accuracy, reliability, relevance or completeness of the material contained in the presentation and nothing contained in the presentation is, or may be relied upon as a promise, representation or warranty, whether as to the past or the future. The Company hereby excludes all warranties that can be excluded by law. The presentation contains material which is predictive in nature and may be affected by inaccurate assumptions or by known and unknown risks and uncertainties and may differ materially from results ultimately achieved.

To the maximum extent permitted by law the Company and its advisors, affiliates, related bodies corporate, directors, officers, partners, employees and agents exclude and disclaim all liability without limitation, for any expenses, losses, damages or costs incurred by you as a result of the information in the presentation being inaccurate or incomplete in any way for any reason, whether by negligence or otherwise, the use of this information or otherwise arising in connection with it.

This presentation contains projections and forward-looking information that involve various risks and uncertainties regarding future events. Such forward-looking information can include without limitation statements based on current expectations involving a number of risks and uncertainties and are not guarantees of future performance of the Company. These risks and uncertainties could cause actual results and the Company's plans and objectives to differ materially from those expressed in the forward-looking information.

Actual results and future events could differ materially from anticipated in such information. These and all subsequent written and oral forward-looking information are based on estimates and opinions of management on the dates they are made and expressly qualified in their entirety by this notice. The Company assumes no obligation to update forward-looking information should circumstances or management's estimates or opinions change.

Exploration Target Size described in this presentation is conceptual in nature and should not be construed as a JORC compliant Mineral Resource. Target mineralisation is based on projections of established grade ranges over appropriate widths and strike lengths having regard for geological considerations including mineralisation style and expected mineralisation continuity as determined by qualified geological assessment. There is insufficient information to establish whether further exploration will result in the determination of a Mineral Resource.

This presentation is not a prospectus, product disclosure statement or other offering document under Australian law (and will not be lodged with ASIC) or any other law. This presentation is for information purposes only and is not an invitation or offer of securities for subscription, purchase or sale in any jurisdiction (and will not be lodged with the U.S. Securities Exchange Commission or Canadian Securities Exchange).

QUALIFIED PERSON

Rhys Davies, RPGeo an Independent Qualified Person as defined by Canadian NI 43-101 standards, has reviewed and approved the geological information reported herein. Certain information in this presentation regarding the presence of mineral deposits, as well as the grades and the size of such deposits, is based on information that has been obtained from publicly available information, industry reports, and Company data. Such reports generally state that the information contained therein has been obtained from sources believed to be reliable, but the accuracy or completeness of such information is not guaranteed. The Qualified Person has not independently verified or cannot guarantee the accuracy or completeness of that information and investors should use caution in placing reliance on such information. Results from other projects are provided for information purposes only and are not indicative of the results that may be obtained from the Company's properties.



Why Invest in Laramide Resources

Late-stage, low technical-risk assets acquired for their size and production potential

Exposure to 117 million pounds of uranium resources* across five projects

Two flagship Development Projects:
ISR in the U.S. and Open-pit in Australia

Resource Growth Potential on Flagship Assets

1st mover advantage in mining friendly Kazakhstan



*See Technical Information on laramide.com.

LARAMIDE RESOURCES LTD.



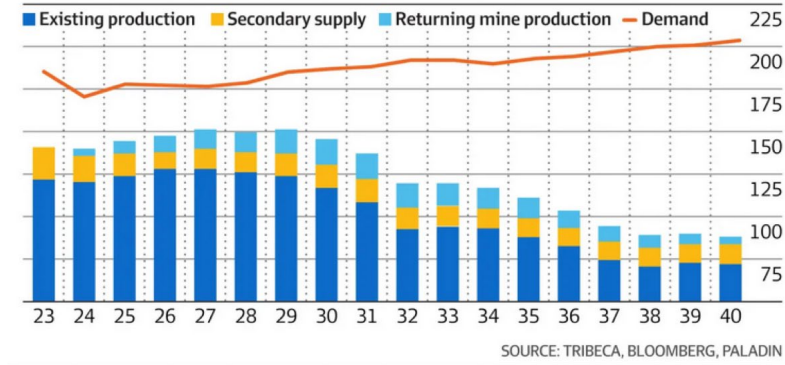
The Uranium Rally: Taking a Breather?

- The SMR and Nuclear Energy equity theme is going strong - largely driven by expectations for AI and advanced technology requirements
- President Trump's agenda recognizes that to restore Global Energy Dominance requires removing barriers to build infrastructure (i.e. permitting)
- January 2025, Cathie Wood (whose ARK ETF became famous with a very early position in Tesla) took a large position in Cameco, reflecting her confidence in the long-term potential of the uranium market as a means to power the rising energy demands of future technologies

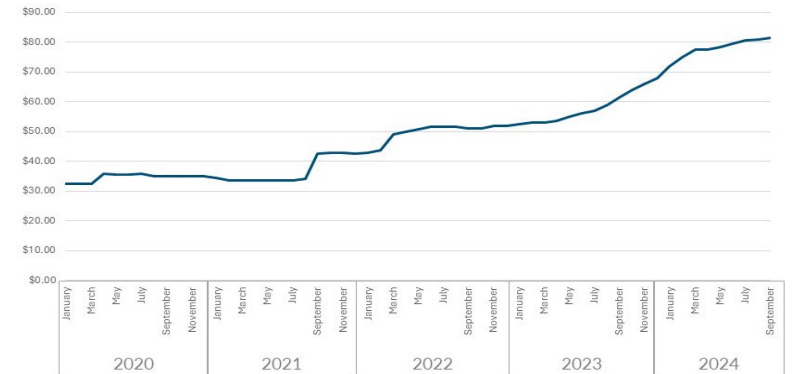
\$OKLO: a nuclear power startup backed by OpenAI's Sam Altman



Forecast structural supply shortage of uranium (Mlbs)



Uranium Term Price YoY



Corporate Snapshot

TSX: LAM

ASX:LAM

OTCQX:LMRXF

LARAMIDE RESOURCES - 1W - TSE 0.60

▼ 1



Shares on Issue ²	248,969,696
Fully Diluted	257,344,696
Market Price (CAD) ³	\$0.60
Market Cap	CAD\$150M

ASX CDIs are 1:1 into common shares and included in total Shares on Issue.
²As at Feb 10, 2025.
³As at Dec 05, 2024.

Analyst Coverage



James Bullen



Michael Curran



Justin Chan



David Talbot



LARAMIDE RESOURCES LTD.

Prospective Timeline for Development – LOM Portfolio >20 years

PROJECT	Location	Resource Size*		Mine Profile	Current Status	Next Steps	Potential Production Capacity
LA SAL	Utah, U.S.	~ 2.4 MLb**	@0.20%	Conventional	Offtake and Process Negotiations	Reopening	0.50 MLb/annum 1 MLb/annum Licensed up to 3MLb/annum 4 MLb/annum
LA JARA MESA	New Mexico, U.S.	10.5 MLb	@0.20%	Conventional	EIS Study	Permitting & initial site development	
CHURCHROCK	New Mexico, U.S.	50.8 MLb	@0.08%	ISR	NRC Licence Renewal Underway: Aquifer Restoration Study Feasibility Study & Final Permit Construction Start		
CROWNPOINT		5.1 MLb	@0.10%				
WESTMORELAND	Queensland, Australia	51.9 MLb	@0.09%	Open Pit	PEA; Mining Lease Application	Pre-Feasibility EIS & Mine Studies;	
CHU-SARYSU	Kazakhstan	Greenfield Exploration (ISR potential)					

*See Global Mineral Resources Table on laramide.com for Class, Tonnage

** Historical number, not verified by Laramide nor NI 43-101

Please see website for all JORC and NI 43-101 Technical Reports



The Projects



AUSTRALIA PROJECTS

Westmoreland Project

Project includes district scale exploration potential across Queensland and Northern Territory

Mineral Development License (MDL) application in progress

Waiting for uranium policy clarification under the new LNP Government in Queensland

- PEA Completed in 2016:
 - Post tax IRR 35.8% and NPV US\$400M at \$65 USD/lb U₃O₈
- Indicated: 36.0 M lbs U₃O₈ @ 0.09%
- Inferred: 15.9 M lbs U₃O₈ @ 0.08%
- Provides a Strong Economic Base Case for a Conventional Mine Plan
- Tier 1 mine: low-risk, lowest quartile cost, conventional operation
- Shallow, flat-flying deposit



2024 Exploration: 11,263m, 106 holes, multiple targets, all shallow OP deposits

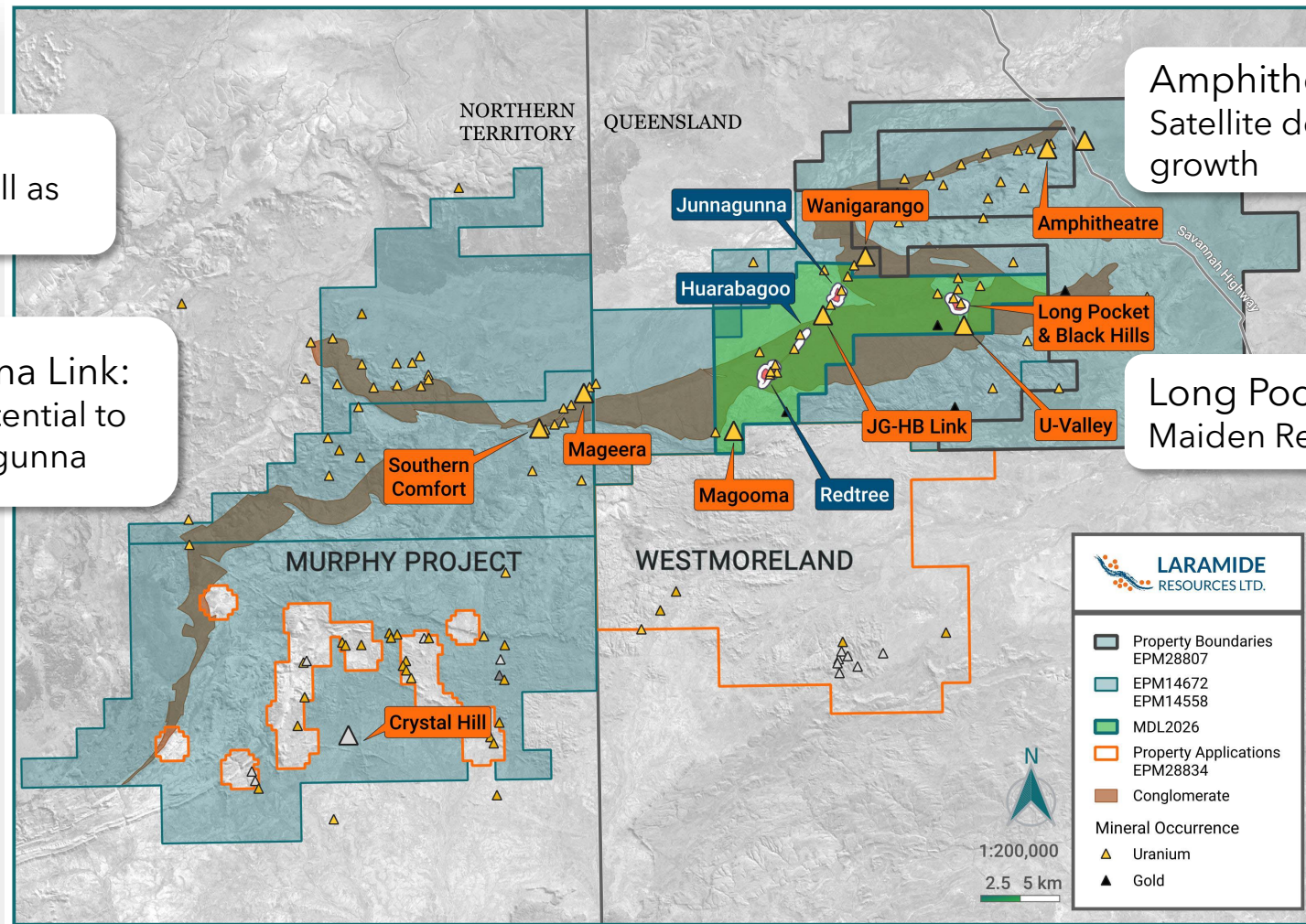
Westmoreland Mineral Resource Update including Maiden Resource due Q1

Huarabagoo:
Higher grade Uranium as well as Gold mineralization

Huarabagoo - Junnagunna Link:
Initial results validate the potential to link Huarabagoo and Junnagunna

Amphitheatre:
Satellite deposit, Exploration growth

Long Pocket:
Maiden Resource due Q1 2025



Drill Highlights

Long Pocket:

- LP24RC004 - 10m @ 0.06% U₃O₈ from 6m depth,
- LP24RC006, 4m @ 0.31% U₃O₈ from 17m.

Huarabagoo:

- HB24DD010 - 15m @ 0.22% U₃O₈ and 0.53g/t Au from 68.4m,
- 7m @ 0.43% U₃O₈ from 76m,
- 1m @ 1.42% U₃O₈ and 0.01 g/t Au from 80.00 m
- HB24DD008 -1m @ 0.22% U₃O₈ and **24.20g/t Au** from 65.00m

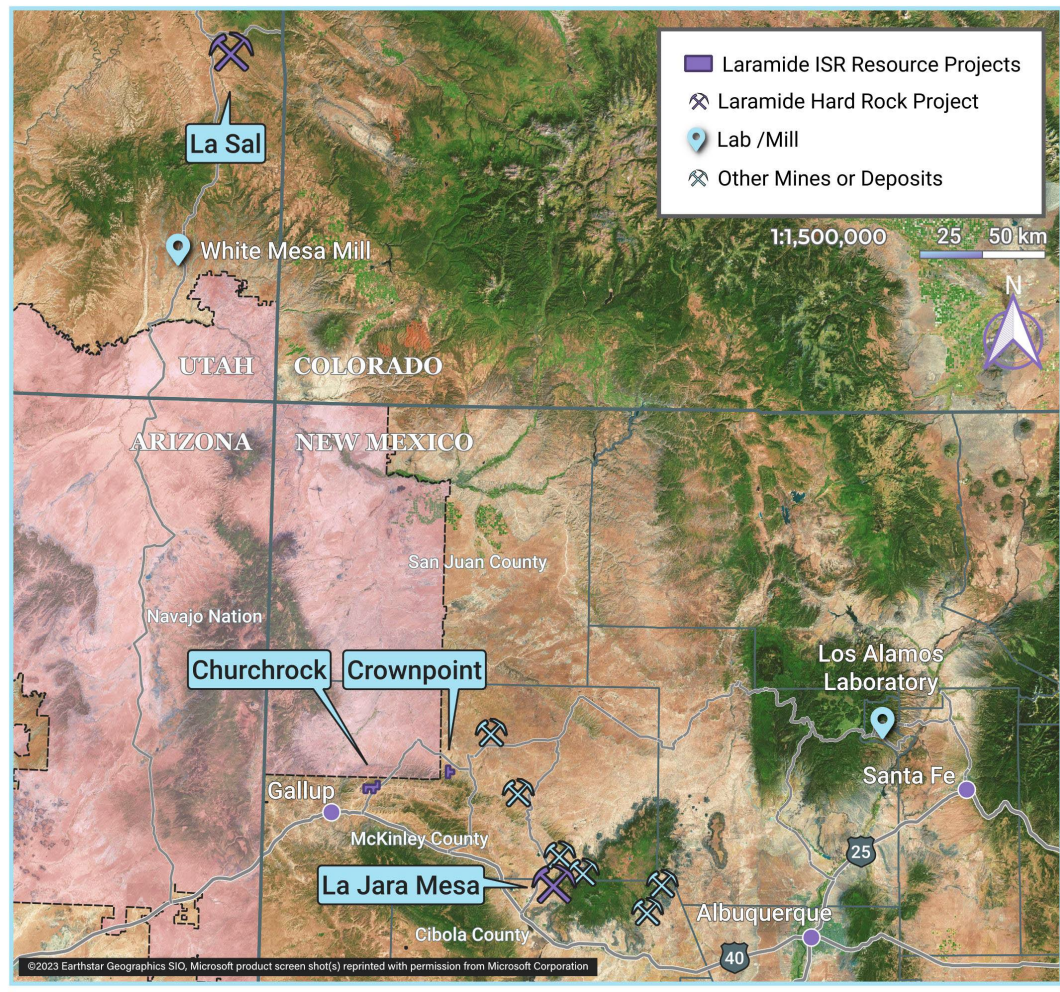
Huarabagoo - Junnagunna Link:

- HJ24DD017 - 1m @ 0.1% U₃O₈ from 28m and 1m @ 0.21% U₃O₈ from 34m
- HJ24DD019 - 6m @ 0.12% U₃O₈ from 87m
- HB24DD004 - 2m @ 0.27% U₃O₈ and 1.51 g/t Au from 63.00m,
- 1m @ 0.41% U₃O₈ & 2.0 g/t Au from 64.00 m.

Amphitheatre:

- AMD009 - 11m @ 0.23% U₃O₈ from 36.7m,
- 4m @ 0.52% from 38m
- 1m @ 1.00% U₃O₈ from 40m





Churchrock-Crownpoint A High-Quality, Late-Stage ISR Uranium Asset

Mineral Resource defined 50.82 M lbs. (Inferred)*
Sediment-hosted roll-front, amenable to ISR mining

The Nuclear Regulatory Commission (NRC) has granted a license for production of uranium from sections of the Churchrock Project and the Crownpoint Project.

Current status: renewal application has been filed

In addition, the NRC has approved the construction of a Central Processing Plant ("CPP") at Crownpoint property

Completion of a NI 43-101 PEA in January 2024 confirmed potential for long-life, low-cost In Situ Recovery uranium operation with staged production from multiple well-fields

La Jara Mesa EIS Process Underway

7.3 MLbs (M&I) and 3.2 MLbs (Inferred)*.

Agreement signed with the Forest Services to fund the services required to restart the USFS NEPA analysis towards the EIS

*See Technical Information on laramide.com.



Favourable Politics Supporting U.S. Operations

Advanced permitting underway at Churchrock Project with federal approvals in place and state approvals pending.

- if starting today it would take 5-10 years for approvals
- no other comparable project in the U.S. in terms of scale (to date)

Federal mandate to streamline permitting process for developing energy projects: "Golden Era of American Energy Dominance"

U.S. Dept of Energy (DoE) recognizes the significance of the Churchrock Uranium deposit as a contributor to advancing research & technology in the ISR industry.

- working with DoE at Los Alamos Lab to create a pathway for sustainable uranium recovery in the U.S. by demonstrating the ability to restore groundwater



The Secretary of Energy

Washington, DC 20585

February 5, 2025

MEMORANDUM FOR HEADS OF DEPARTMENTAL ELEMENTS

FROM: CHRIS WRIGHT
SECRETARY OF ENERGY

A handwritten signature in black ink, appearing to read "Chris Wright".

SUBJECT: Unleashing the Golden Era of American Energy Dominance

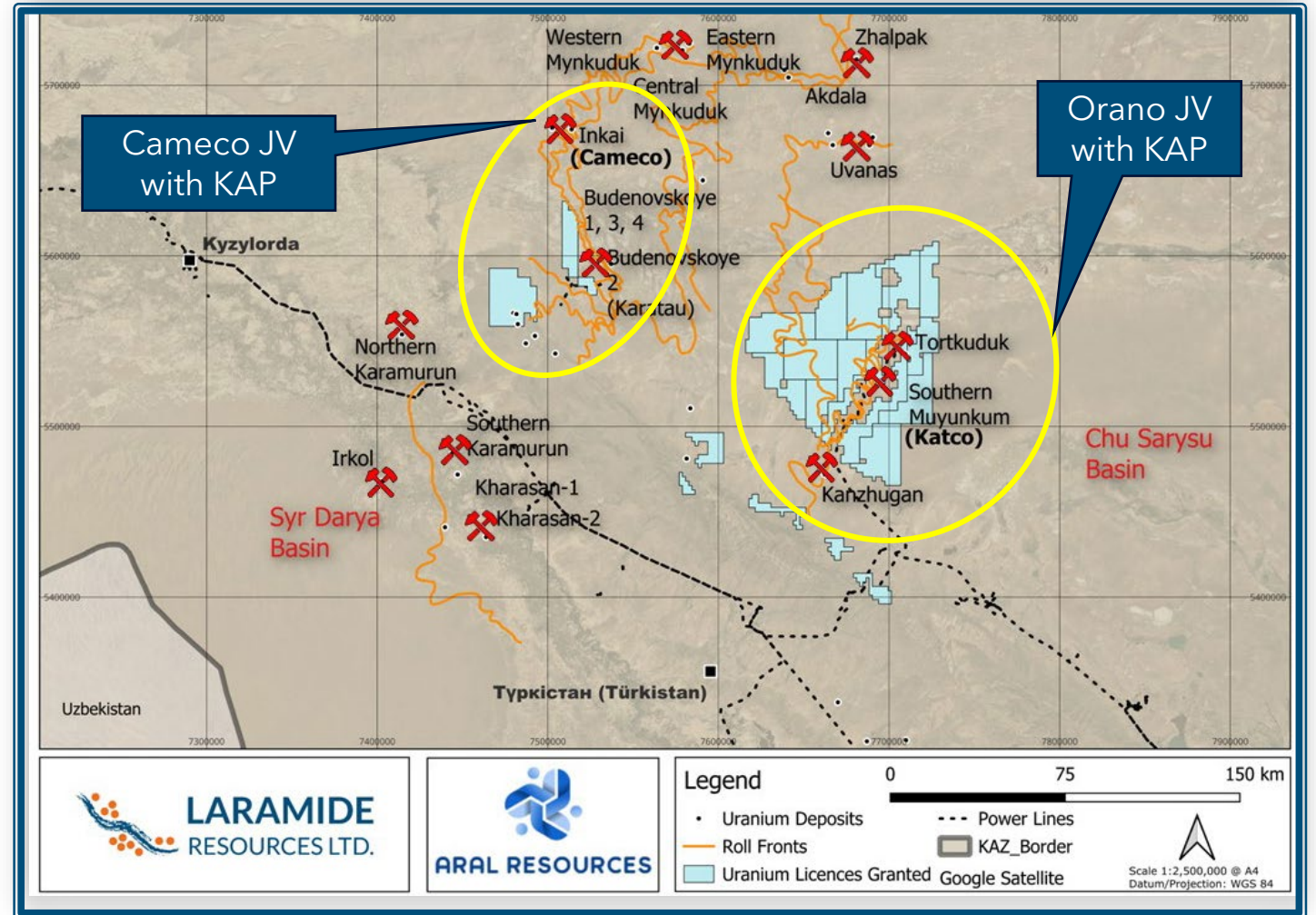
"Unleash Commercial Nuclear Power in the U.S.:

The long-awaited American nuclear renaissance must launch during President Trump's administration. As global energy demand continues to grow, America must lead the commercialization of affordable and abundant nuclear energy. As such, the Department will work diligently and creatively to enable the rapid deployment and export of next-generation nuclear technology."



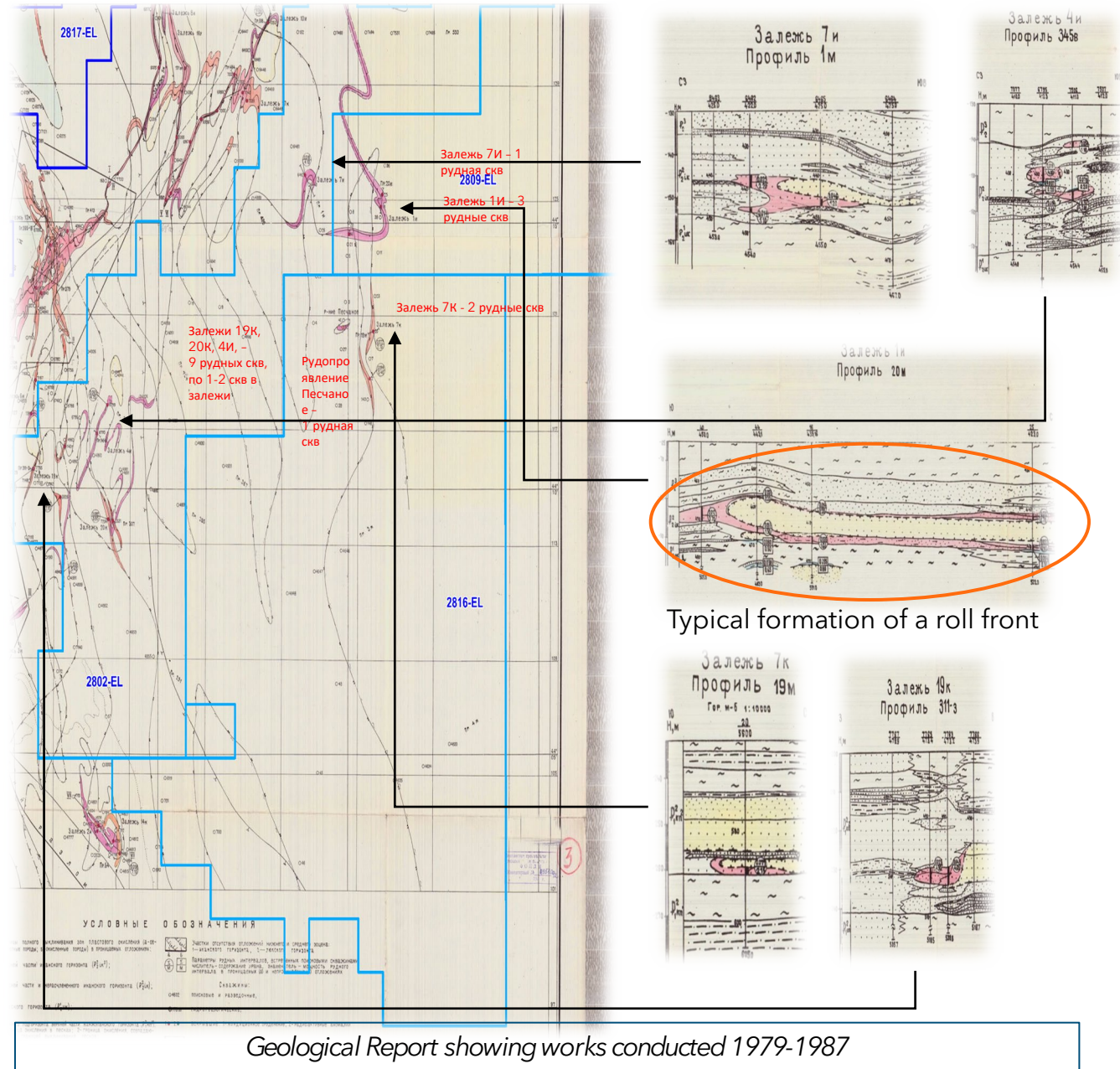
Chu-Sarysu Project, Kazakhstan

- The Chu Sarysu basin hosts 60% of Kazakh U Production and 25% of Global Production
- Laramide's optioned claims (in light blue) are proximal to some of Kazatprom's largest uranium deposits and operational mines.
- The Chu-Sarysu Project area includes a number of paleo-channel roll-fronts, associated with uranium deposits and are amenable to ISR mining.



Access to Excellent Historical Surveys Facilitates 2025 Drill Program

- Historical data from Kazakhstan’s state National Geological Services which includes Soviet-era data has been acquired.
- Numerous uranium roll-front targets identified in historical drilling data. Many never followed-up. *Low hanging fruit!*
- Detailed maps are accommodating drill plans.
- At least 16 immediate, walk-up drilling targets already identified.
- Process of ranking and prioritisation underway.
- Initial exploration activities (Q1-Q2) will focus on ground reconnaissance and airborne geophysical surveying.
- Ecological Permits being obtained and drilling contractor tender underway for Q3-Q4 2025 drilling.



News Flow and Valuation Catalysts

Westmoreland Mineral Resource Update

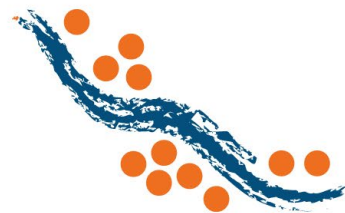
Transition to Development Activities at Westmoreland

Update on U.S. Project Permitting

Initial Exploration in Kazakhstan including Drilling

Highly Correlated to Uranium Price





LARAMIDE
RESOURCES LTD.



Marc Henderson
President, CEO & Director

TEL (TORONTO)
+1 416 599 7363

Ann Baines
Director, Investor Relations

TEL (TORONTO)
+1 647 832 9904
EMAIL: ann@laramide.com

TSX : LAM | ASX : LAM | OTCQX: LMRXF

www.LARAMIDE.com