



Tulla Resources Plc

ASX:TUL

Bell Potter Unearthed Conference Presentation
9 FEBRUARY 2022

Disclaimer



This Presentation

This presentation by Tulla Resources Plc (ARBN 122 088 073) (**Tulla Resources or the Company**) is to be delivered at the Bell Potter Unearthed Conference on 9 February 2022. Statements in this presentation are made only as at 31 January 2022 and the information in this presentation remains subject to change without notice. The information in this presentation is of a general nature and does not purport to be complete, is provided solely for information purposes of giving you summary information and background about Tulla Resources and its related entities and their activities, and should not be relied upon by the recipient.

No representation or warranty, express or implied, is made as to the fairness, accuracy, completeness or correctness of the information, opinions and conclusions contained in this presentation. This presentation does not purport to summarise all information that a recipient should consider when making an investment decision and should not form the basis of any decision by a recipient.

Recipients should carry out their own investigations and analysis of the Company and verify the accuracy, reliability and completeness of the information contained in this presentation.

Not an Offer

This presentation and its contents is not, and does not constitute, or form any part of, an offer to sell or issue, or the solicitation, invitation or recommendation to purchase any securities in the Company in any jurisdiction. This presentation is not a prospectus or any other offering document under either Australian law or the laws of England and Wales or any other law.

No liability / Disclaimer

To the maximum extent permitted by law, Tulla Resources and the Company's respective affiliates or related bodies corporate or any of their respective officers, directors, employees, agents and advisers (**Related Parties**), nor any other persons, accepts any responsibility or liability for, and makes no recommendation, representation or warranty concerning, the content of this presentation. The Company and Related Parties shall not be liable whatsoever (including in respect to negligence) for any loss or damage which may be suffered by any person as a consequence of any information in this presentation or any omission. The Company will not update or keep current any information in this presentation or correct any error, misstatement or omission which may become apparent. Any opinions expressed in this presentation are subject to change without notice.

International Offer Restrictions

This presentation is not, and does not constitute, or form any part of, an offer to sell or the solicitation, invitation or recommendation to purchase any securities in the United States and neither this presentation nor anything contained herein shall form the basis of any contract or commitment. This presentation may not be distributed or released in the United States. Securities may not be offered or sold in the United States unless such securities are registered under the U.S. Securities Act of 1933, as amended (**U.S. Securities Act**) or in a transaction exempt from, or not subject to, the registration requirements of the U.S. Securities Act and any other applicable securities laws. Any public offering of securities in the United States would be made by means of a prospectus that would be obtained from the issuer or selling security holder and that would contain detailed information regarding the company and management, as well as financial statements. Each institution or person that reviews this presentation will be deemed to represent that each such institution or person is not in the United States.

The distribution of this presentation may be restricted by law. Persons who come into possession of this presentation should seek advice and observe any such restrictions. Any failure to comply with such restrictions may constitute a violation of applicable securities laws.

Exploration Targets, Exploration Results

The information is extracted from the reports as referred to in this Presentation created on the dates stated herein and are available to view on the Company's website (www.tullaresources.com) and the ASX (www.asx.com.au). The Company confirms that it is not aware of any new information or data that materially affects the information included in the original market announcement.

Mineral Resources or Ore Reserves

The information is extracted from the report entitled 'Annual Mineral Resource and Ore Reserve Statement' created on 27 September 2021 and is available to view on the Company's website (www.tullaresources.com) and the ASX (www.asx.com.au). The Company confirms that it is not aware of any new information or data that materially affects the information included in the original market announcement and, in the case of estimates of Mineral Resources or Ore Reserves, that all material assumptions and technical parameters underpinning the estimates in the relevant market announcement continue to apply and have not materially changed. The company confirms that the form and context in which the Competent Person's findings are presented have not been materially modified from the original market announcement.

Not financial product advice

Reliance should not be placed on the information or opinions contained in this presentation. This presentation is for information purposes only and is not a financial product or investment advice or recommendation to acquire Tulla Resources securities (or any interest in Tulla Resources securities) and does not take into consideration the investment objectives, financial situation or particular needs of any particular investor. You should make your own assessment of an investment in Tulla Resources and should not rely on this presentation. In all cases, you should conduct your own research of the Company and analysis of the financial condition, assets and liabilities, financial position and performance, profits and losses, prospects and business affairs of Tulla Resources and its business, and the contents of this presentation. You should seek legal, financial, tax and other advice appropriate to your jurisdiction.

Past performance

Past performance information given in this presentation is given for illustrative purposes only and should not be relied upon as an indication of (and gives no guidance as to) future performance.

Disclaimer (Continued)



Future performance

This presentation contains certain forward-looking statements (including financial forecasts) with respect to the financial condition, operations and business of the Company and certain plans and objectives of the management of Tulla Resources. Forward-looking statements can be identified by the use of forward-looking terminology, including, without limitation, the terms “believes”, “estimates”, “anticipates”, “expects”, “predicts”, “intends”, “plans”, “goals”, “targets”, “aims”, “outlook”, “guidance”, “forecasts”, “may”, “will”, “would”, “could” or “should” or, in each case, their negative or other variations or comparable terminology. These forward-looking statements include all matters that are not historical facts.

Such forward looking statements involve known and unknown risks, uncertainties and other factors which because of their nature may cause the actual results or performance of the Company to be materially different from the results or performance expressed or implied by such forward looking statements. Such forward looking statements are based on numerous assumptions regarding Tulla Resources' present and future business strategies and the political and economic environment in which Tulla Resources will operate in the future, which may not be reasonable, and are not guarantees or predictions of future performance. No representation is made that any of these statements or forecasts will come to pass or that any forecast result will be achieved, or that there is a reasonable basis for any of these statements or forecasts.

Forward-looking statements speak only as at the date of this presentation .

All figures in the presentation are Australian dollars (\$) or A\$) unless stated otherwise. A number of figures, amounts, percentages, estimates, calculations of value and fractions in this presentation are subject to the effect of rounding. Accordingly, the actual calculation of these figures may differ from the figures set out in this presentation.

Financial information

The pro forma and forecast financial information provided in this presentation is for illustrative purposes only and does not represent a forecast or expectation as to Tulla Resource's future financial condition and/or performance.

Acknowledgement

Persons who access, receive, review or attend this presentation are required to inform themselves of, and comply with, all of the above restrictions and prohibitions and none of Tulla Resources or the Related Parties accepts any liability to any person in relation thereto. This presentation is made to you on the basis that by attending, accessing or receiving or reviewing this presentation, you confirm that you understand and agree to the contents of this important notice and disclaimer and that you are a person to whom this presentation may lawfully be made in accordance with laws applicable to you, including those of the jurisdiction in which you are located.

Authorised for Release

This announcement was authorised for release by the Board

Delivering on our Strategy

Bring the Norseman Gold Project into production

- JV parties focusing on delivering Phase One LOM Plan
- Construction of new plant well underway for planned recommencement of production in August 2022
 - Major equipment delivered to site or in transit
- Contracts to be awarded for OMP and UGM imminent to commence mining in May 2022
- Exploration success leading to expanded Resources and Reserves to support Phase Two expansion and extension of LOM
- Current drilling (six rigs) at Scotia Deeps and Green Lantern
- Updated JORC Statement expected in March quarter

Strategy for other Norseman minerals

- Initial review completed of lithium, nickel and iron ore
- Lithium JV signed
- Iron ore Off take and funding non binding HoA signed
- Exploring other commercialisation options



Corporate Snapshot



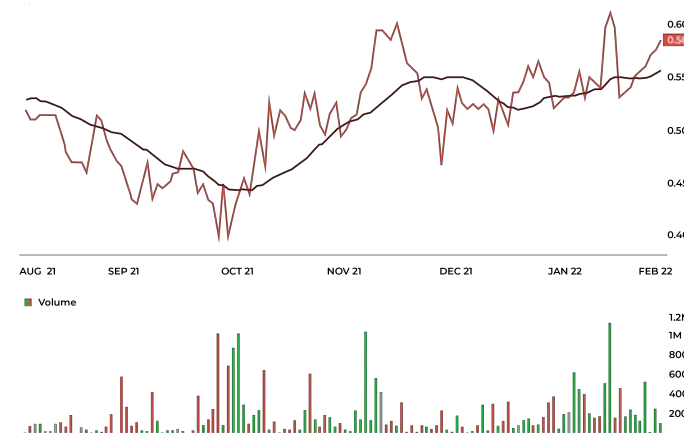
Tulla Resources (ASX:TUL) is a diversified Resources House and owns a 50% interest in the historic flagship Norseman Gold Project, located in the Eastern Goldfields of Western Australia, at the southern end of the highly productive Norseman-Wiluna greenstone belt. In October 2020 a DFS2 was released¹ on the Project in respect to a 7 year Phase One project life to resume production in H2 2022 at the Norseman Gold Project.

Tulla Resources is now focused on working with JV partner, Pantoro, to deliver on the DFS, recommence production and fast track to cashflow, whilst continuing to identify exploration targets and implement drilling programs to significantly increase Mineral Resources and Ore Reserves. The Company is also assessing its iron ore, lithium and nickel opportunities at Norseman.

Key Metrics – ASX:TUL

Share Price ²	\$0.57/sh
Ordinary Shares	269.2m
Market Capitalisation	\$153.4m
Cash at Bank ³	\$27.6m
PNR Shares (market value) ²	\$28.2m
Enterprise Value ⁴	\$97.6m
Resource Attributable to Tulla Resources	2.27Moz
Enterprise Value / Resource	\$43.0/oz
Reserves Attributable to Tulla Resources	0.35Moz
Enterprise Value / Reserves	\$278.8/oz

Share Price Chart



Top 5 Shareholders

Tulla Resources Group Pty Ltd	67.00%
Franklin Templeton	5.00%
Berne No 132 Nominees	3.30%
Bell Potter Nominees	2.10%
Citicorp Nominees	1.90%

Notes: (1) 12 October 2020 – DFS for the Norseman Gold Project – Pantoro release (ASX:PNR) (www.pantoro.com.au) (2) Market data as at 3-February -2022. (3) As at 31 December 2021 (4) Implied enterprise value calculated based on Market Capitalisation less Cash on Hand and market value of shares held in Pantoro

Board and Management



Kevin Maloney

Executive Chairman

- Extensive career in international and corporate banking, finance and the resources industry
- Involved with several public companies as an executive and a director. He was previously Non-Executive Chairman of HRL Holdings Ltd, Non-Executive Director of Queensland Mining and Non-Executive Chairman of Altona Mining Ltd.
- Chairman of THEMAC Resources, a Company listed on the Toronto Stock Exchange.

Mark Maloney

Executive Director

- Previously, Mark was Chief Executive Officer of The MAC Services. During Mark's tenure, The MAC Services became a member of the S&P/ASX 200.
- 15 years' experience in investment markets, having held senior management positions with J.P. Morgan Chase & Co and Goldman Sachs Group Inc in London and Sydney.

Michael Anglin

Non-Executive Director

- Michael spent 22 years with BHP Billiton, most recently serving as Vice President of Operations and Chief Operating Officer of the Base Metals Group based in Santiago, Chile, before retiring in 2008.
- Joined the board of SSR Mining Inc in 2008 and is now the current Chairman.

Andrew Greville

Non-Executive Director

- 35 years of experience in the mining industry, including senior roles in business development and strategy with Xstrata Queensland Limited, Pechiney World Trade (USA) Inc., BHP Billiton and Minera Escondida Ltd in Chile.
- Andrew has been the Managing Director of West End Mining & Consulting since 2014 and sits on the board for other ASX and internationally listed companies

Frederick Kempson

Non-Executive Director

- Frederick has had a distinguished career in investment banking starting with the RBA licenced official money market dealer (Trans City Discount), followed by an association in London with Bank of England licenced Gillett Brothers Discount House.
- Frederick has been the Managing Director of Kempson Capital and served as the Chairman or director of several Australian and international companies.

Mark McIntosh

Chief Financial Officer

- Joined Tulla Group in 2012
- Previously worked at KPMG Private Enterprise
- 20 years' experience advising and working for private and public companies

Stephen Maffey

Company Secretary and General Counsel

- Consulted to Norseman Gold Project since October 2013
- 15 years as a senior partner in a major UK/ European Law Firm
- Involved in governance and risk in the resources industry since 2010

Andy Robb

Norseman Asset Leader

- Mining Engineer with over 40 years of experience
- Has held senior management and executive positions, with a proven strong track record in evaluating and implementing mining projects and representing the interests of joint venture parties

Colin McIntyre

Technical Consultant

- Mining Engineer with +35 years of experience
- Former Mine Manager at Southern Cross and Operations Manager at Mincoa Resources, Mawson Pacific and Macmahon Holdings

Ken Pickering

Technical Advisor

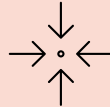
- Mining Engineer with 50 years of experience
- Previously held various general manager roles at BHP / BHP Biliton across Australia, Chile, Peru and North America for ~40 years

Investment Highlights



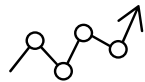
50% Interest in the Norseman Gold Project as Cornerstone Investment

- Extensive Mineral Resources of 42.0Kt @ 3.4 g/t Au for 4.5Moz and with an Ore Reserve of 713Koz¹ (100%)
- Initial seven-year project life
- Upgraded whole of mine plan expected at commencement of production to add further high grade ounces and more life to current Phase One mine plan



Well Defined Growth Strategy

- Strategy to increase Ore Reserves (~1.0 to 1.2Moz²) (100%) with a substantial drilling program – currently six rigs on site
- Initially focused on Phase 1 mine plan, with planned resumption of production in August 2022
- Last 2 years intensive exploration programs and a systematic approach have yielded excellent results (i.e. recent Panda and Green Lantern discoveries and Scotia Deeps)
- Maiden Mineral Resource and Reserve for Green Lantern³
- Updated Mineral Resource and Ore Reserve Statement planned for March 2022 quarter to be incorporated as part of Phase Two increasing ounces and LOM



Exploration Upside

- Brownfield and greenfield opportunities identified
- Lakes program - Sailfish
- Prioritising potential targets – North fields. Polar bear and Sontaran areas



Lithium Farm-In

- Mineral Resources highly experienced developer and producer of lithium assets
- Free carry to production



Iron Ore Off Take arrangement

- Non-binding heads of agreement signed with Koch Metals Limited for Off take and funding for the Company's iron ore assets
- Subject to conditions precedent including listing of Koch Metals on LSE



Experienced & Proven Board and Management Team

- Significant joint venture experience and success in bringing mining projects into production
- Deep knowledge of the Norseman Gold Project through long history of management and control
- Lean corporate structure with mandate for future growth
- Extensive history of identifying investment opportunities in the mining / mining services sector and unlocking meaningful value for shareholders



Solid Balance Sheet

- Robust cash position of \$27.6 million⁴
- Debt free and unhedged with full leverage to gold price through gold production from the Norseman Gold Project
- Substantial share holding in Pantoro (\$28.2 million)⁵

Fully Committed JV

In May 2019, Tulla Resources entered into a farm-in and joint venture agreement (FJVA) to sell a 50% share in the Norseman Gold Project to Pantoro.

Rationale

A 50% Joint-Venture

- Tulla Resources continue to see long-term upside in the asset; maintaining a 50% interest provides exposure to the Norseman Gold Project's production and exploration potential
- Unincorporated joint venture commenced April 2021 following Pantoro sole funding of \$50 million expenditure
- Tulla Resources ongoing confidence in Pantoro demonstrated by its substantial shareholding at the corporate level

Consideration Outstanding by Pantoro

- **Pantoro Royalty** - Net smelter royalty on 1% of Pantoro's attributable gold and silver capped at \$6 million and thereafter an additional 0.0025% royalty for a further period of 5 years
- **Milestone Payment** - \$10 million cash payable upon the definition of at least 1.8Moz (less amount mined pursuant to the FJVA) of probably and proven reserves of gold ore in compliance with the JORC Code

Key JV terms

- Pantoro South Manager of the JV as agent for the JV Parties
- JV Management Committee established
 - Kevin Maloney Tulla Resources representative
- Role of the Management Committee
 - Supervised the Manager
 - Make strategic decisions in respect to the joint venture activities
- Cross Security - on called sums (excluding dilution provisions) and other outstanding obligations under the FJVA
- Overriding objective - Best for Project Principle - good faith based on equitable return for each JV party

Norseman Gold Project (50%)

Multiple Mining Centres

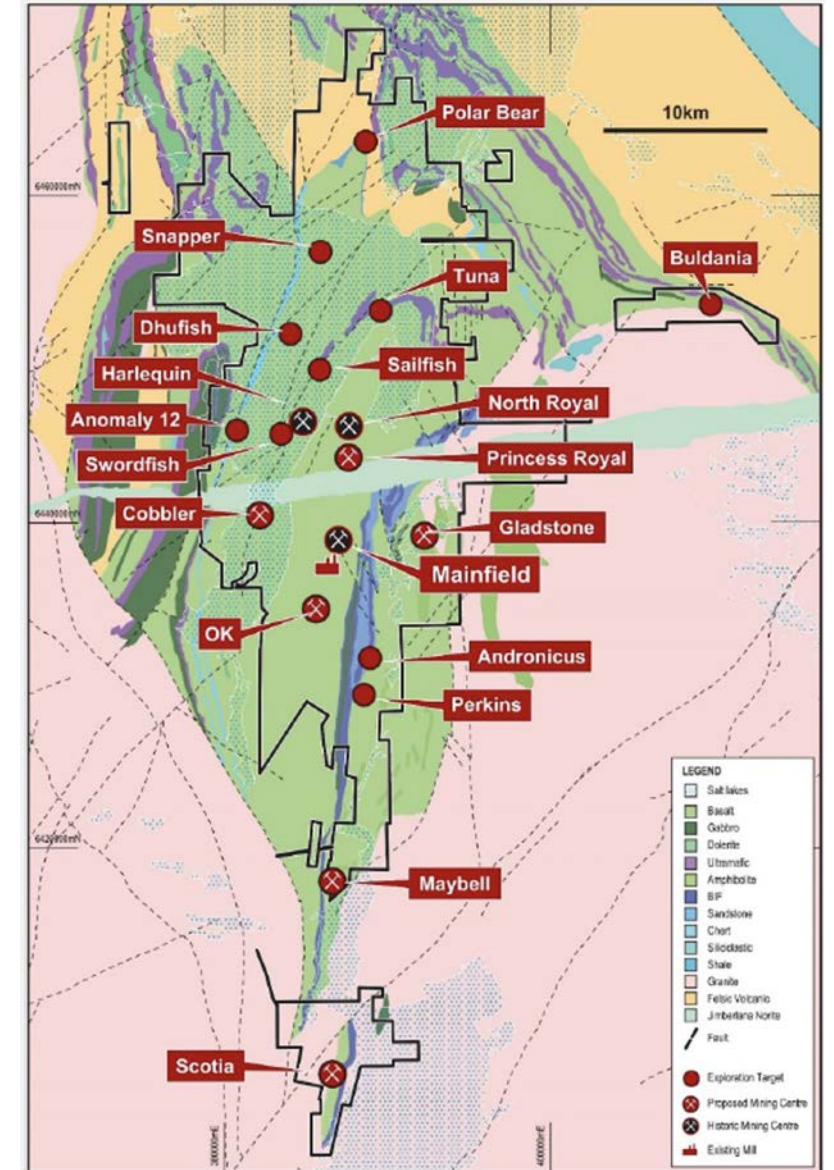
- Large tenure position of 152 Tenements covering approximately 70 km of strike
- 6 Mining Centres with focus on initial 4 key Mining Centres (Scotia, Gladstone, OK, and Cobbler) in the first 7 years
- Reviewing Mine Schedule to include Green Lantern (subject to permitting)

High Quality Infrastructure

- Extensive existing infrastructure
- Construction of new 1.0Mtpa carbon in leaching gold plant well underway and production scheduled to recommence in August 2022

Large Endowment

- Current Mineral Resource of 4.5 Moz and Ore Reserve of 713 Moz (100%)
- Historic production of approximately 6 Moz
- Historically the highest grade project in WA
- Systematic exploration undertaken – yielding strong results
- Phase 1 plan has less than 30% of Mineral Resource areas
- Maintaining intensive drill program to extend life and productivity and explore for new potential deposits.



Leveraging Existing Infrastructure

The Norseman Gold Project is adjacent to the Norseman township, with existing infrastructure already in place.



Processing Plant

- Construction of a new 1.0Mtpa carbon in leach processing plant well underway (with flexibility to be increased up to 1.5Mtpa)
- Designed to treat multiple ore sources, and additional ore sources from subsequent phases of development
- Crushing circuit sized to enable increased throughput with minor modification



Accommodation

- New co-living village in Norseman town to accommodate up to 206 persons now operational with additional rooms under construction



Airstrip

- Airstrip at Norseman – initial upgrade to accommodate small planes and proposal to be resurfaced and extended for larger planes



Power

- 10MW diesel power station on site - contractor owned / operated and currently provides power to the town of Norseman
- Upgrade to the existing power station from 10MW generated at 3.3kV to 15MW generated at 11kV (power consumption estimated to be 127,200 kWh per day) underway



Water and Gas

- Existing Jimberlana bore field consists of ten bores, three of which are equipped and used for past production / seven other cased bores
- Field includes water storage and transfer station and associated pipelines to transfer raw water from the bore field to the processing plant
- Production bores and transfer station (including the telemetry system) will be refurbished to operational capacity prior to commissioning of the new processing facility
- Potable water demand (supplied from GAWSS)
- The Pilbra Gas pipeline has an offtake running through the Norseman tenements



Tailings Storage Facility

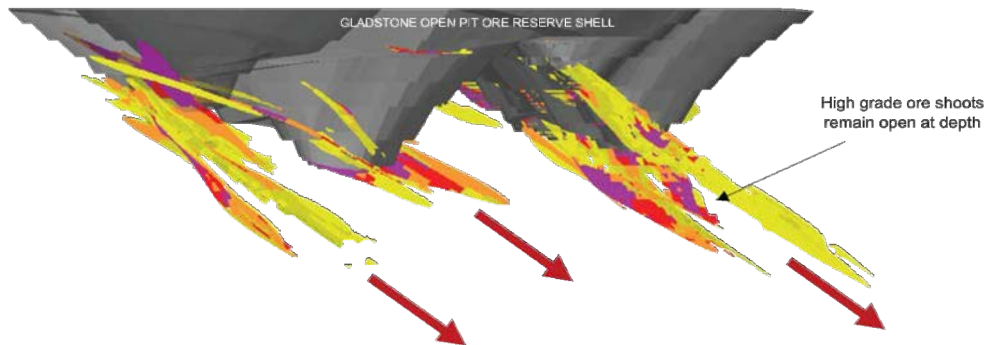
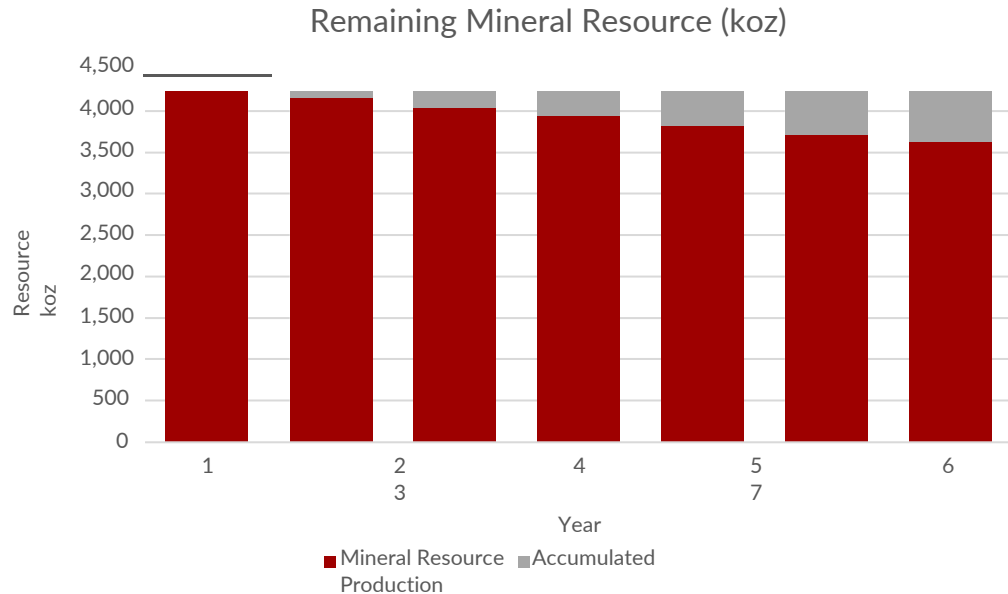
- Existing tailings storage facility TSF4. Rehabilitation of TSF4 and new embankment construction in progress



Roads

- Access to and from Mining Centres is primarily via both Coolgardie-Esperance & Eyre Highways and internal road network

Building on a solid resource foundation



Source: Norseman Gold Project Definitive Feasibility Study

Phase 1: Small portion of available Mineral Resource further developed by JV to date

- Only 30% of the Mineral Resource considered in DFS
- Selected areas prioritised on ease of production restart
- Most areas focused on open pits but have subsequent underground potential

Phase 2: Drilling programs aiming to double ounces available for inclusion in mine plan

- Phase 2 focusses on high grade areas including:
 - Scotia extensions – depth and strike extension to known mineralisation, plus development.
 - Green Lantern.
 - Mainfield – Main source of high grade ore historically with mined grades and shallow depths by WA standards.
 - Additional Options at Polar Bear and Sontaran in the North Fields

Scotia – A Big Mining Centre Getting Bigger

Scotia Open Pit

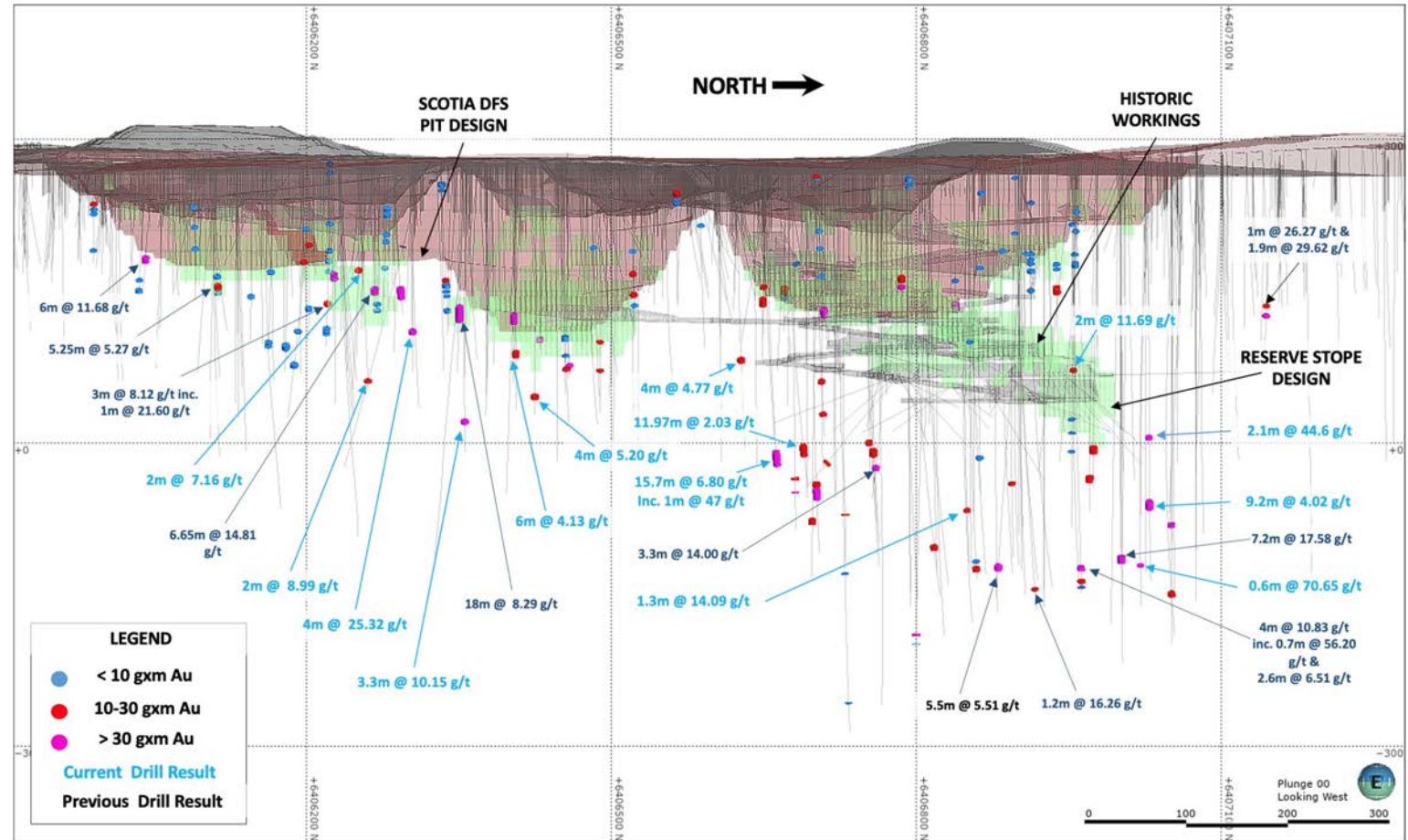
- Historic mined grade of 5.9g/t (open pit and underground combined)
- Mined from 1987-1996
- Current Open Pit 1.1 km Long
- The Scotia Open Pit Mineral Resource has seen an increase in the Indicated Mineral Resource category related to additional drilling.
- Likely doubling of length with Green Lantern

Scotia Deeps

- Infill and extension of Scotia Deeps confirms high grade mineralisation more than 500 m below surface, potential for a long-life underground operation.
- Underground Mining is expected to commence well before the completion of open pit mining with an integrated plan already included in the Phase 1 Mine Plan.

New drill results highlights:

- 4 m @ 25.32 g/t Au from 203 m.
- 3.28 m @ 10.15 g/t Au from 303 m.
- 15.7m @ 6.8 g/t Au from 332 m Incl. 1 m @ 47 g/t Au from 346.7 m



Long Section of Scotia Mine

Scotia Mining Centre – Green Lantern

Green Lantern

- Green Lantern discovery announced in August 2020 revealed a number of wide, ore grade intersections in a zone which had not previously been drilled
- Recent drilling extends near surface mineralisation a further 300 m to the south of the Green Lantern Mineral Resource
- Multiple Lodes with a typical high-grade Scotia style zone and a broad lower grade zone identified
- Infill drilling completed – from discovery to Maiden Mineral Resource/Ore Reserve in thirteen months
- Added 310,000 ounces to the total inventory replacing the previous Lady Eleanor Mineral Resource with additional 37,700 metres of drilling.
- Exploration to continue re Green Lantern South extension

New drill results highlights:

- 5 m @ 6.48 g/t Au from 107 m.
- 4 m @ 7.16 g/t Au from 115 m.
- 8 m @ 10.42 g/t Au from 41 m incl. 2 m @ 35.73 g/t Au from 46 m.
- 9 m @ 3.05 g/t Au from 93 m.
- 20 m @ 2.06 g/t Au from 42 m.
- 6 m @ 3.35 g/t Au from 76 m.
- 4 m @ 5.02 g/t Au from 107 m.
- 3 m @ 11.58 g/t Au from 61 m.
- 10 m @ 2.62 g/t Au from 94 m incl. 2 m @ 9.97 g/t Au from 99 m.

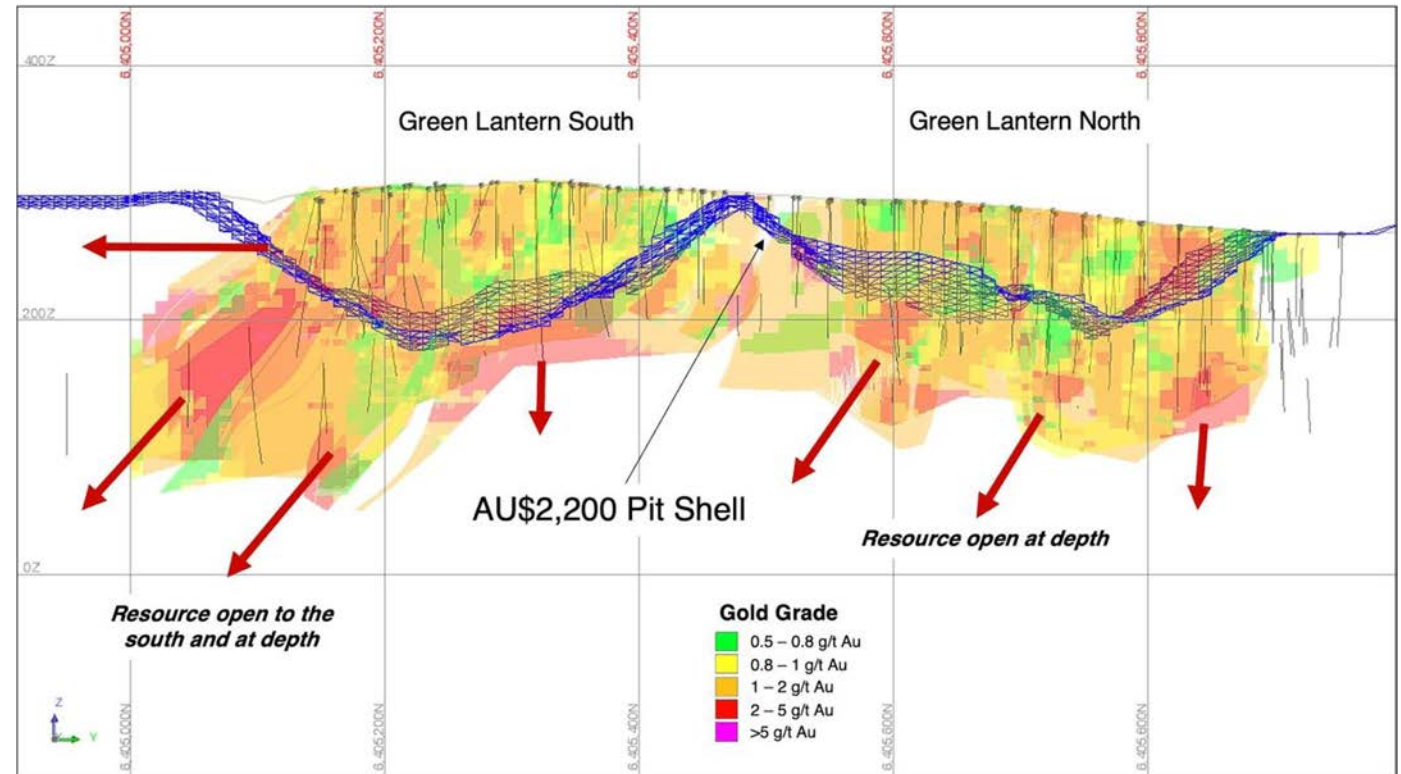
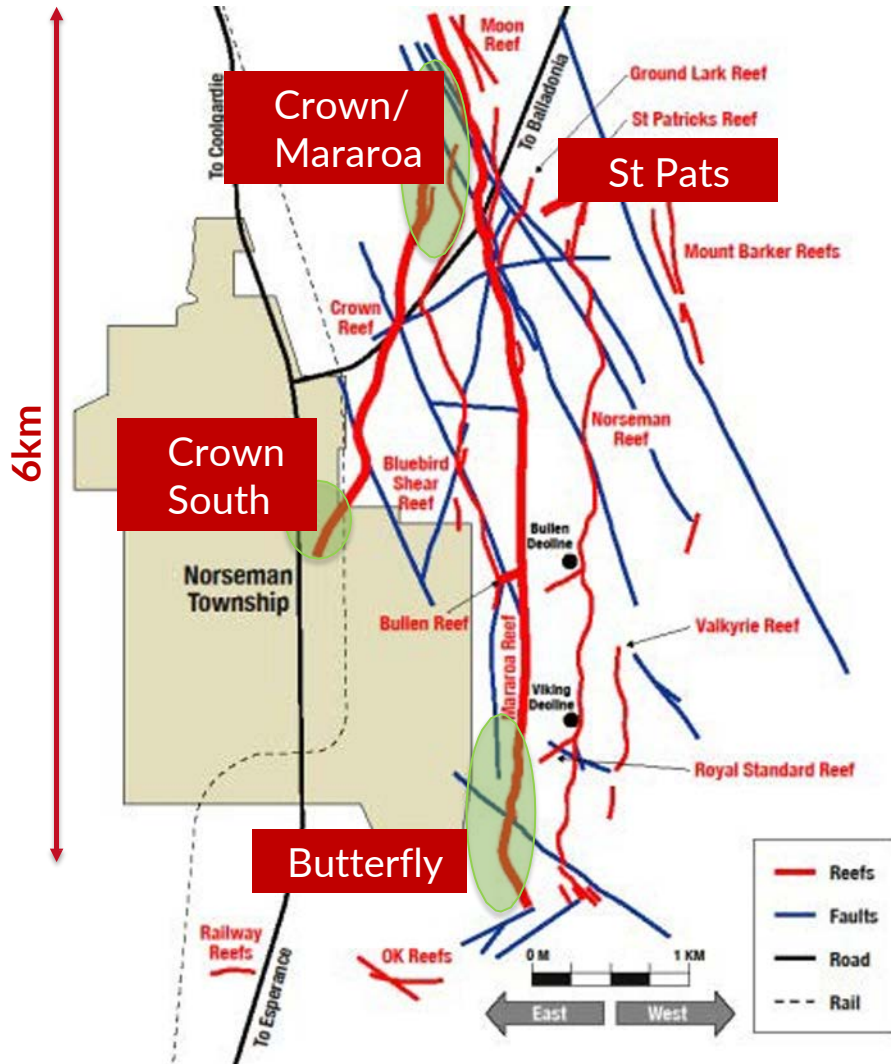


Figure: Green Lantern – Long Section
386860m +/- 25m

Norseman Mainfield



- ✓ Mainfield is the most prolific mining area at Norseman to date.
- ✓ First pass drilling completed with focus areas identified.
- ✓ Drill areas focussed on zones easily accessed from existing infrastructure
- ✓ Large areas unmined previously
- ✓ Very high grade mineralisation encountered
- ✓ Drilling program to focus on Butterfly and St Pats planned

5.7 m @ 35.85 g/t Au inc. 1.4 m @ 141.57 g/t Au.¹	
4 m @ 6.86 g/t Au.	2 m @ 6.21g / tAu.
1 m @ 23.5 g/t Au.	2 m @ 5.8 g / t Au.
0.45 m @ 21.9 g/t Au.	4 m @ 5.68g / tAu.
2 m @ 20.61 g/t Au.	3 m @ 5.35g / tAu.
2 m @ 15.87 g/t Au.	4 m @ 4.33g / tAu.
6 m @ 14.94 g/t Au.	5 m @ 3.99g / tAu.
1 m @ 10.3 g/t Au.	4 m @ 3.53g / tAu.
2 m @ 10.8 g/t Au.	3 m @ 3.24g / tAu.
1.15 m @ 8.47 g/t Au.	5 m @ 3.20g /tAu.OP & UG
3 m @ 7.72 g/t Au.	



Source: (1) TUL ASX release dated 13/07/21

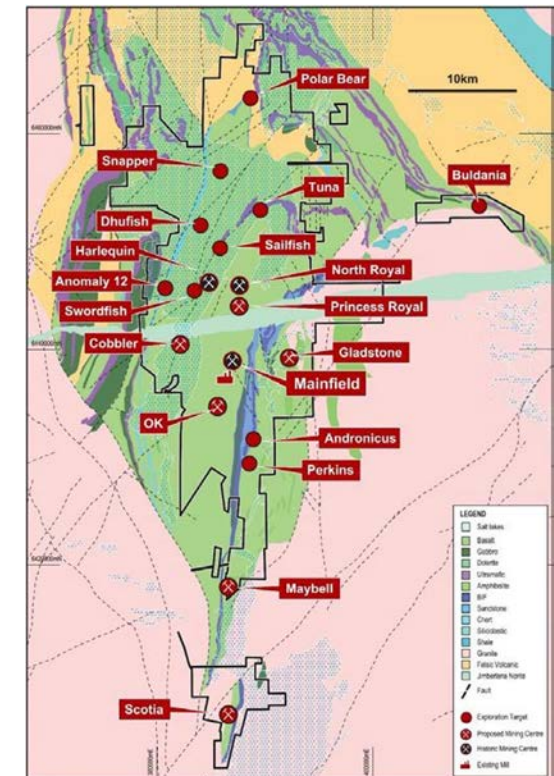
Norseman - Historic Production & Exploration Upside

A High Scale, Top Tier Asset	World-class Greenstone Belt	Highly Prospective Area	Significant Exploration Upside
Norseman produced ~6 Moz historically and has a substantial Mineral Resource at high grade. It is part of the highly prospective Yilgarn Craton, clustered near other large deposits	The Norseman Gold Project tenure is situated in the southern end of the most gold-endowed Greenstone Belt of the Yilgarn Craton.	The area between Norseman and Kambalda is highly prospective. Much of the region is covered by dry salt lakes with minimal exploration.	The Norseman Gold Project 50% Norseman tenure is a significant proportion of the highly prospective region, including Lake Cowan which has had minimal modern exploration

OUTSTANDING EXPLORATION TARGETS	<ul style="list-style-type: none"> Multiple +1 Moz Targets & no systematic exploration since early 1990's Extensive tenure covering the Lake Cowan area was not adequately assessed historically Later on-lake mining (Harlequin) highly successful and productive (~800 koz @ ~10 g/t Au) Lakes prospects and tenure are directly along strike of the historical major high grade producing mines
SYSTEMATIC APPROACH	<ul style="list-style-type: none"> Whole of project close spaced gravity survey completed (lake and peninsular areas) Gravity combined with re-processed magnetic data has generated approximately 60 targets which have been ranked for priority (combination of lake and peninsular targets) Awaiting air core drill rig for next phase of lake drilling

GOOD RESULTS FROM FIRST TARGET - SAILFISH	<ul style="list-style-type: none"> 22 holes have been drilled at Sailfish, confirming a shallow SE dipping lode system Typical Norseman style mineralisation characterised by high grades and abundant visible gold Multiple host lithologies including Bluebird Gabbro, hanging wall basalts and on the contact of the units
--	--

NORSEMAN GOLD PROJECT DRILLING ¹
1.6 m @ 61.78 g/t Au
0.7 m @ 521 g/t Au
1.2 m @ 8.1 g/t Au
0.9 m @ 59.88 g/t Au
0.65 m @ 115.41 g/t Au
1.6 m @ 4.07 g/t Au
1.8m @ 4.25 g/t Au



Lithium Development Potential – Preliminary Assessment



Background

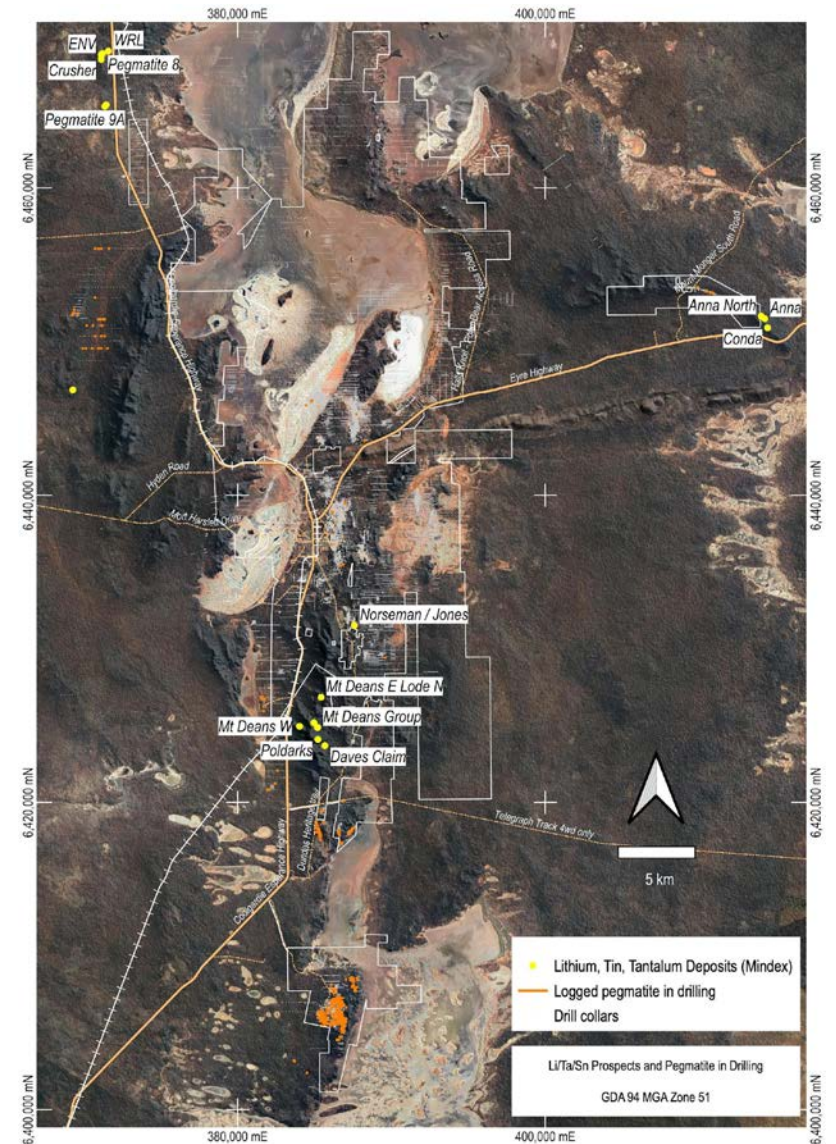
- Tulla Resources has completed a preliminary assessment of the Lithium potential at Norseman
- Lithium is part of the current JV with Pantoro (50% Tulla Resources - 50% Pantoro)

Summary

- Potential for strike extensions to Liontown Resources' Anna Lithium deposit
- Spodumene bearing and lepidolite bearing potential recognised
- No historic lithium exploration
- Pegmatites recorded in drilling across multiple prospect areas
- Historic Tantalum production from pegmatites
- Large demand/supply shortfall predicted

Lithium Farm-In with Mineral Resources Limited (ASX:MIN) and Pantoro

- Announced 14 December 2021
- Free carry to production



Iron Ore Development Potential – Preliminary Assessment*

Background

- 100% Tulla Resources - Iron ore is not part of the Pantoro JV
- Preliminary assessment of historical data completed

Summary

- 18 km of prospective stratigraphy identified on current project tenure
- Limited exploration with very few holes targeting iron ore potential
- Potential to produce a low-impurity magnetite concentrate
- Significant existing regional infrastructure
 - Located adjacent to Norseman-Esperance rail
 - Deepwater port at Esperance already shipping iron ore

Off take and funding HoA signed with Koch Metals Limited

- Non-binding and subject to conditions precedent
- Announced 21 January 2022

*Preliminary Assessment completed by Mining Associates from validated historic exploration data



Nickel Development Potential – Preliminary Assessment*



Background

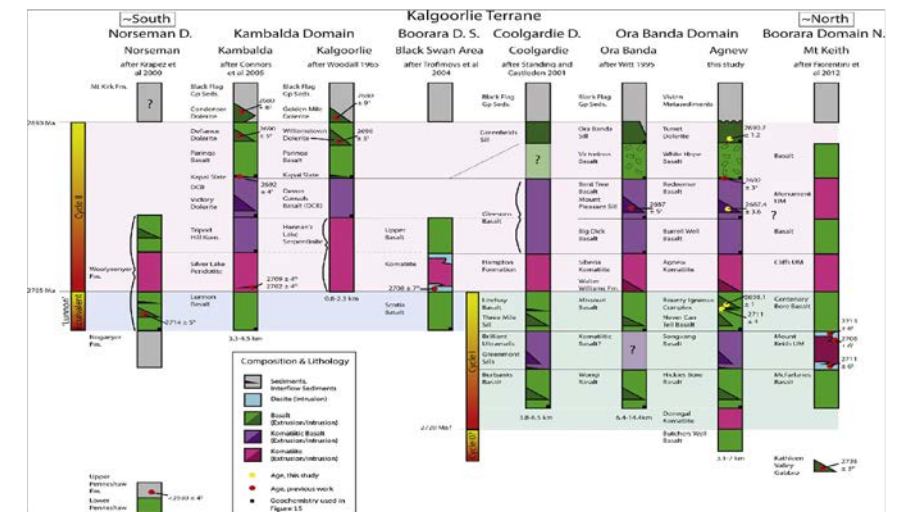
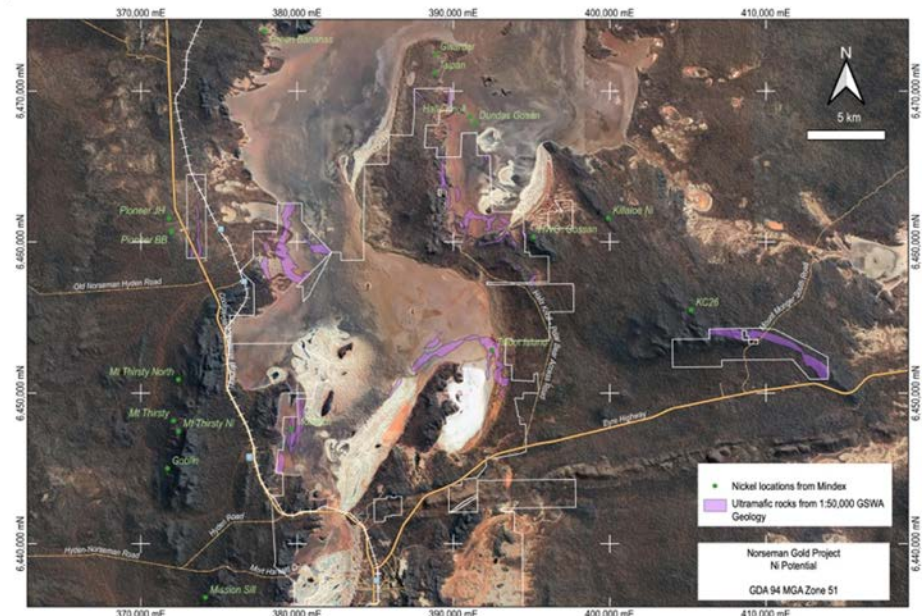
- Tulla Resources has completed a preliminary assessment of nickel potential at Norseman from historic exploration activity undertaken between 1991 to 2006
- Nickel exploration has been largely confined to work by WMC and later by Nickel Australia Limited (under a *Nickel Rights Agreement*) between December 2003 and 2006
- Most advanced exploration took place at Talbot Island and Monarch
- Nickel is part of the current JV with Pantoro (50% Tulla Resources - 50% Pantoro)

Summary

- ~50 km of prospective stratigraphy covering 24 km² on current tenure identified
- Ultramafic rocks are the stratigraphic equivalent of the Kambalda Ni host
- Hosted separately from Gold and so can be mined with minimum interaction
- Under-explored with little RC and DD drilling targeting nickel
- Multiple historic targets including Talbot Island, Monarch, Polar Bear, Peninsular, Jimberlana, and Mt Thirsty
- Potential for related Pt & Pd mineralisation
- Access to Kambalda Ni concentrator and Kalgoorlie Ni smelter via sealed highways

Next Steps

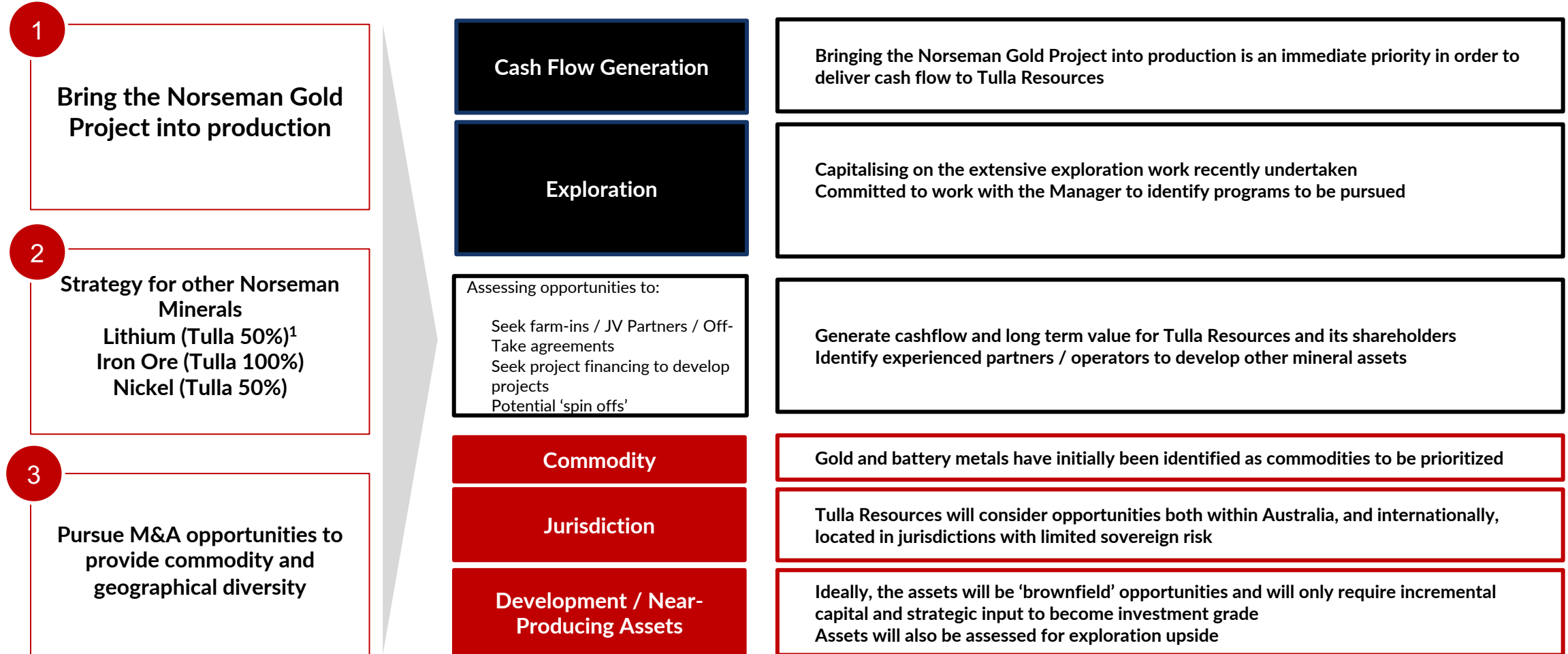
- Further work to complete historic drill hole data validation and target ranking
- Review commercialisation options with Pantoro in context of JV and Tulla Resources diversification of portfolio strategy



*Preliminary Assessment completed in conjunction with Mining Associates from historic exploration data (WMC and Nickel Australia)

Tulla Resources' Strategy

Tulla Resources' strategy is focused on bringing the Norseman Gold Project into production, and developing and/or acquiring other resource assets to provide commodity and geographical diversity.

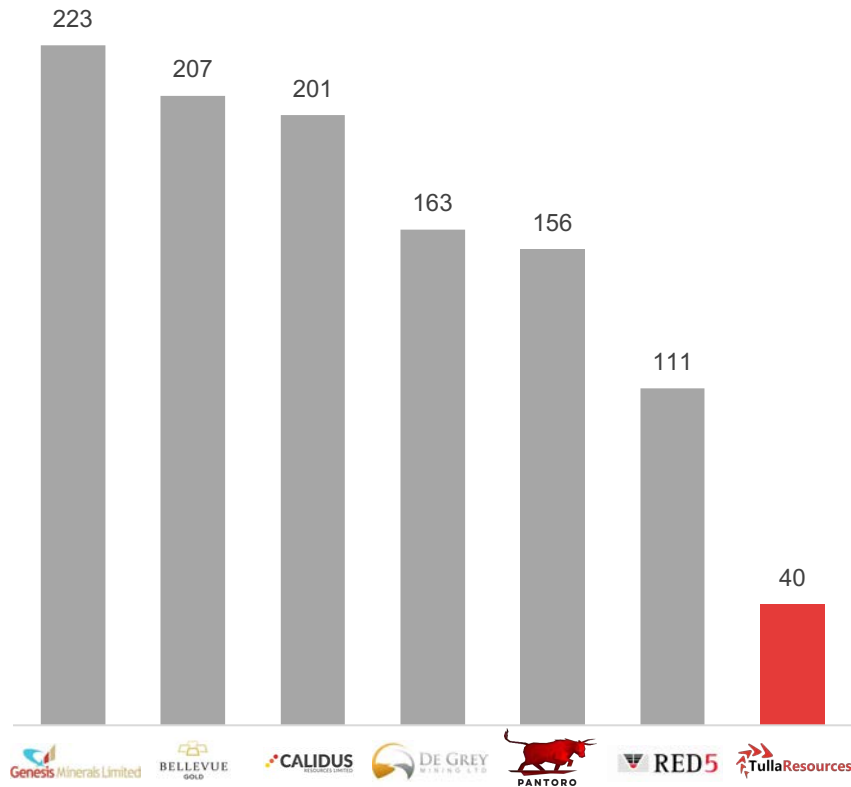


Note: (1) Tulla Resources' interest to be reduced as agreed pursuant to the lithium JV with Mineral Resources Limited and Pantoro

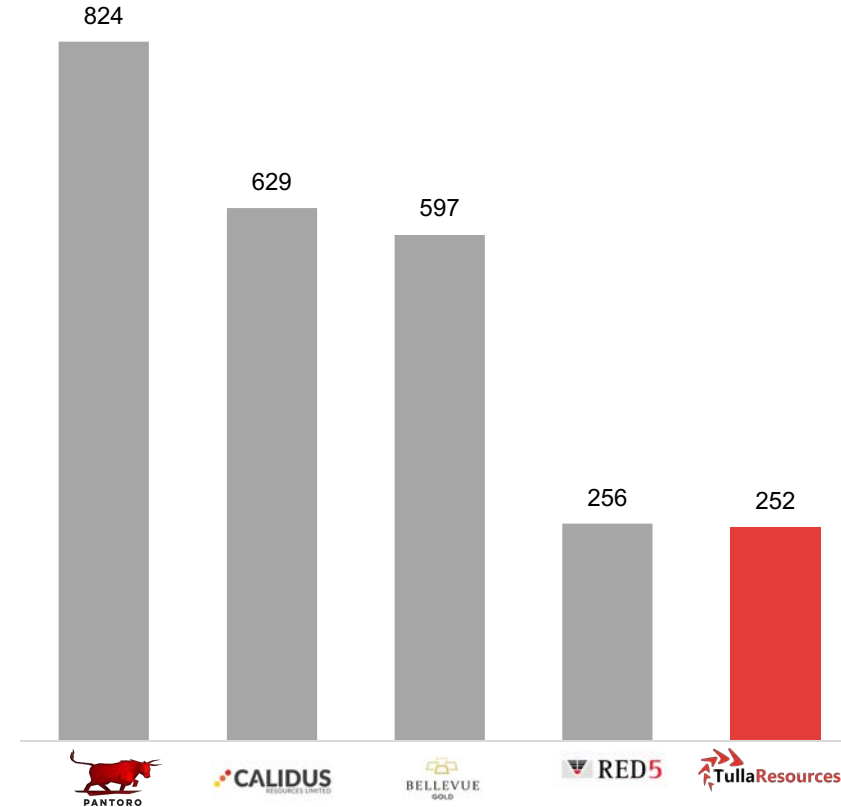
Peer Trading Comparables

Tulla Resources currently trades at a material discount to ASX-listed gold developers and explorers both on an EV/Resource and EV/Reserve basis

EV/Resource (MI&I) (A\$/oz)¹



EV/Reserve (P&P) (A\$/oz)¹



Refer to Appendix 1 for source information

- EV / Resource & EV / Reserve has been calculated using:
 - Attributable Reserves and Resources, and cash and debt disclosed by each company on the ASX as at market close on 31 January 2022
 - Closing share price per IRESS at 31 January 2022
 - Basic shares on issue as at 31 January 2022 as per the most recent public disclosure
 - EV includes adjustment for listed investments valued at 31 January 2022, cash does not include gold in circuit

Appendix



Appendix 1: Comparable Gold Companies*



Companies selected are considered comparable to Tulla Resources as they are in development and/or exploration

ASX code	Company	Measured, Indicated, and Inferred Resources			Proven & Probable Reserves			Source
		Resource Tonnes (Mt)	Grade (g/t Au)	Contained Au (Moz)	Reserve Tonnes (Mt)	Grade (g/t Au)	Contained Au (Moz)	
BGL	Bellevue Gold Limited	9.4	9.9	3.0	5.3	6.1	1.0	Quarterly Activities Report (Announced on the ASX 24 January 2022)
CAI	Calidus Resources Limited	44.1	1.2	1.7	14.3	1.2	0.5	Quarterly Activities Report and Quarterly Cash Flow Report (Announced on the ASX 27 January 2022)
DEG	De Grey Mining Limited	229.8	1.2	9.0	-	-	-	Quarterly Activities Report (Announced on the ASX 28 January 2022)
GMD	Genesis Minerals Limited	27.3	1.8	1.6	-	-	-	Quarterly Activities Report/Appendix 5B Cash Flow Report (Announced on the ASX 28 January 2022)
PNR	Pantoro Limited	22.3	3.6	2.6	6.7	2.3	0.5	Quarterly Activities Report/Appendix 5B Cash Flow Report (Announced on the ASX 20 January 2022)
RED	Red 5 Limited	117.6	1.7	6.0	67.2	1.2	2.6	Company presentation – December 2021 quarterly (Announced on the ASX 28 January 2022) 2021 Annual Report (Announced on the ASX 12 October 2021)

Other inputs	Input date	Source
Cash and debt balances	31 December 2021	Appendix 5B Cash Flow Report – Quarter Ended 31 December 2021
Shares on issue	31 January 2022	Latest Appendix 2A/3G

* Source information for slide 20
Resources and Reserves are presented on a group attributable basis, numbers shown have been rounded

Appendix 2: TUL Relative Share Price Performance vs XGD

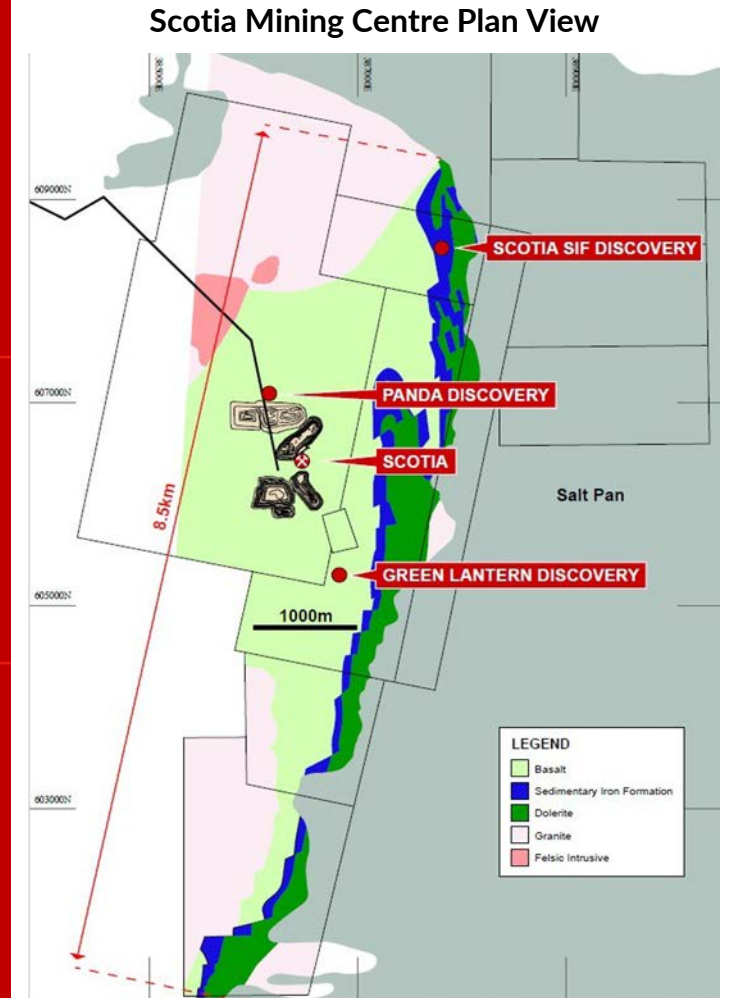


Source: Market data per IRESS at 31 January 2022

XGD.ASX (S&P / ASX All Ordinaries Gold Index) is the weighted average of companies in the gold sub-industry of the All Ordinaries Index

Appendix 3: Scotia – An Exploration Success Story

<p>GREEN LANTERN DISCOVERY</p>	<ul style="list-style-type: none"> Green Lantern discovery announced in August 2020 revealed a number of wide, ore grade intersections in a zone which had not previously been drilled Near surface mineralisation identified over a strike length of approximately 1,100 metres with mineralisation open to the south and down dip Multiple Lodes with a typical high-grade Scotia style zone and a broad lower grade zone identified Green Lantern mineralisation appears to be an extension of the Lady Eleanor shear system which provides a combined strike of ~1.2 kilometers infill drilling completed - Maiden Mineral Resource/Ore Reserve reported September 2021 	<p>28m @ 8.41 g/t Au 9m @ 5.44 g/t Au 10m @ 5.00 g/t Au 10.5m @ 4.76 g/t Au 5.8m @ 6.17 g/t Au 16m @ 2.61 g/t Au 21m @ 2.36 g/t Au 4m @ 2.01 g/t Au 14m @ 2.32 g/t Au</p>
<p>SCOTIA SIF DISCOVERY</p>	<ul style="list-style-type: none"> The Noganyer Sedimentary Iron Formation (SIF) traverses the Norseman tenements with a number of historical open pits further North. Noganyer hosts of a number of Mineral Resources in current inventory First time drilled at Scotia Discovered in June 2021, only tested 150 metres of strike to date High-resolution magnetics data acquired – targeting in progress 	<p>14m @ 12.84 g/t Au 7m @ 3.35 g/t Au 27m @ 1.89 g/t Au 8m @ 2.27 g/t Au 1m @ 8.34 g/t Au 2m @ 3.32 g/t Au 3m @ 2.34 g/t Au</p>
<p>PANDA DISCOVERY</p>	<ul style="list-style-type: none"> The Panda discovery is located approximately 250 metres west of the current Scotia Mineral Resource on a parallel but previously untested structure 59 holes have been drilled since the lode was discovered, defining a shallow plunging lode system like that seen in the adjacent Scotia lodes Deepest intersection to date is approximately 150 metres below surface with mineralisation defined over a distance of ~530 metres Mineralisation commences from surface and remains open at depth Mineralisation has not been included in the mining schedule for Scotia and may substantially increase the ounces estimated to be mined from Scotia in Phase One 	<p>5m @ 24.84 g/t Au 9m @ 10.84 g/t Au 2m @ 12.7 g/t Au 2m @ 10.57 g/t Au 2m @ 9.1 g/t Au 3m @ 9.41 g/t Au 1m @ 9.55 g/t Au</p>



Appendix 4: Norseman Mineral Resource and Ore Reserve*



The Norseman Gold Project boasts a high-grade mineral endowment across its prospective mining tenements.

Tulla Resources Attributable Mineral Resource

	Measured			Indicated			Inferred			Total		
	kt	Grade (g/t)	koz	kt	Grade (g/t)	koz	kt	Grade (g/t)	koz	kt	Grade (g/t)	koz
Norseman Gold Project ¹	2,286	1.6	117	8,898	3.3	954	9,559	3.9	1,192	20,743	3.4	2,267

Norseman Gold Project Mineral Resource ²

	Measured			Indicated			Inferred			Total		
	kt	Grade (g/t)	koz	kt	Grade (g/t)	koz	kt	Grade (g/t)	koz	kt	Grade (g/t)	koz
Total Underground	267	14.4	124	2,048	13.6	895	2,883	10.7	988	5,196	12.0	2,010
Total Surface South	140	2.3	10	11,541	2.0	737	12,910	2.7	1,132	24,591	2.4	1,886
Total Surface North	4,165	0.7	100	4,207	2.0	276	3,325	2.5	264	11,684	1.7	639
Total (3)	4,572	1.6	234	17,796	3.3	1,908	19,118	3.9	2,385	41,472	3.4	4,534

1. Tulla Resources attributable Mineral Resource via its 50% ownership of the Norseman Gold Project.
2. Stated on a 100% basis for the Norseman Gold Project. Tulla Resources has a 50% ownership of the Norseman Gold Project.

Measured and Indicated Mineral Resources are inclusive of those Mineral Resources modified to produce the Ore Reserves. Mineral Resource and Ore Reserve statements have been rounded for reporting.

Rounding may result in apparent summation differences between tonnes, grade and contained metal content.

* Refer to the Full Annual Mineral and Reserve Statement dated 27 September 2021 (ASX:TUL)

Appendix 4: Norseman Mineral Resource and Ore Reserve*

Tulla Resources Attributable Ore Reserve

	Proved			Probable			Total		
	kt	Grade (g/t)	koz	kt	Grade (g/t)	koz	kt	Grade (g/t)	koz
Norseman Gold Project ¹	2,083	0.8	50	3,729	2.6	307	5,811	1.9	357

Norseman Gold Project Ore Reserve ²

	Proved			Probable			Total		
	kt	Grade (g/t)	koz	kt	Grade (g/t)	koz	kt	Grade (g/t)	koz
Underground	-	-	-	787	5.3	135	787	5.3	135
Open Pit - Northern Mining Centres	-	-	-	2,058	2.4	161	2,058	2.4	161
Open Pit - Southern Mining Centres	-	-	-	4,612	2.1	317	4,612	2.1	317
Stockpiles	4,165	0.75	100	-	-	-	4,165	0.8	100
Total	4,165	0.75	100	7,458	2.6	613	11,623	1.9	713

1. Tulla Resources attributable Mineral Resource via its 50% ownership of the Norseman Gold Project.
2. Stated on a 100% basis for the Norseman Gold Project. Tulla Resources has a 50% ownership of the Norseman Gold Project.

Measured and Indicated Mineral Resources are inclusive of those Mineral Resources modified to produce the Ore Reserves. Mineral Resource and Ore Reserve statements have been rounded for reporting.

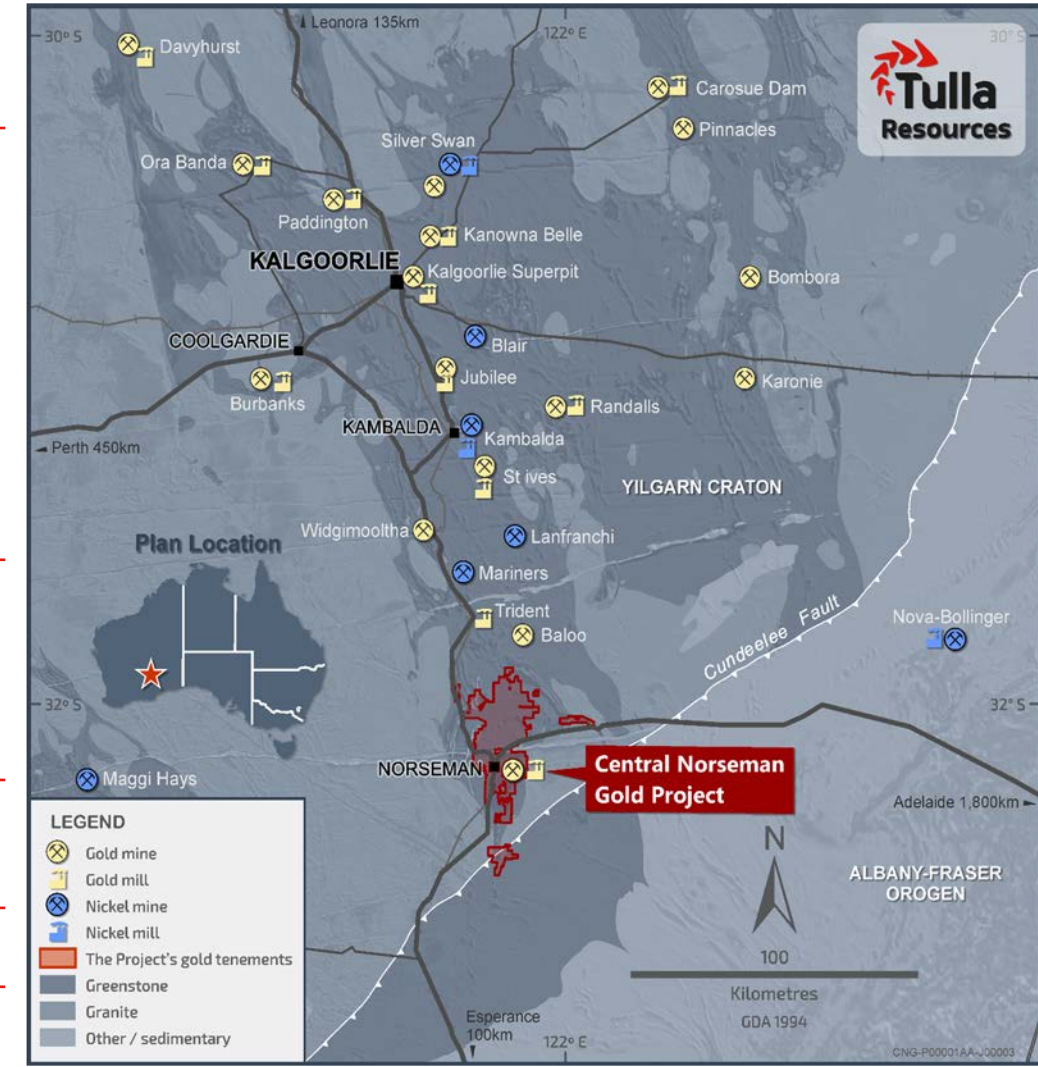
Rounding may result in apparent summation differences between tonnes, grade and contained metal content.

Appendix 5: Detail on the Norseman Gold Project

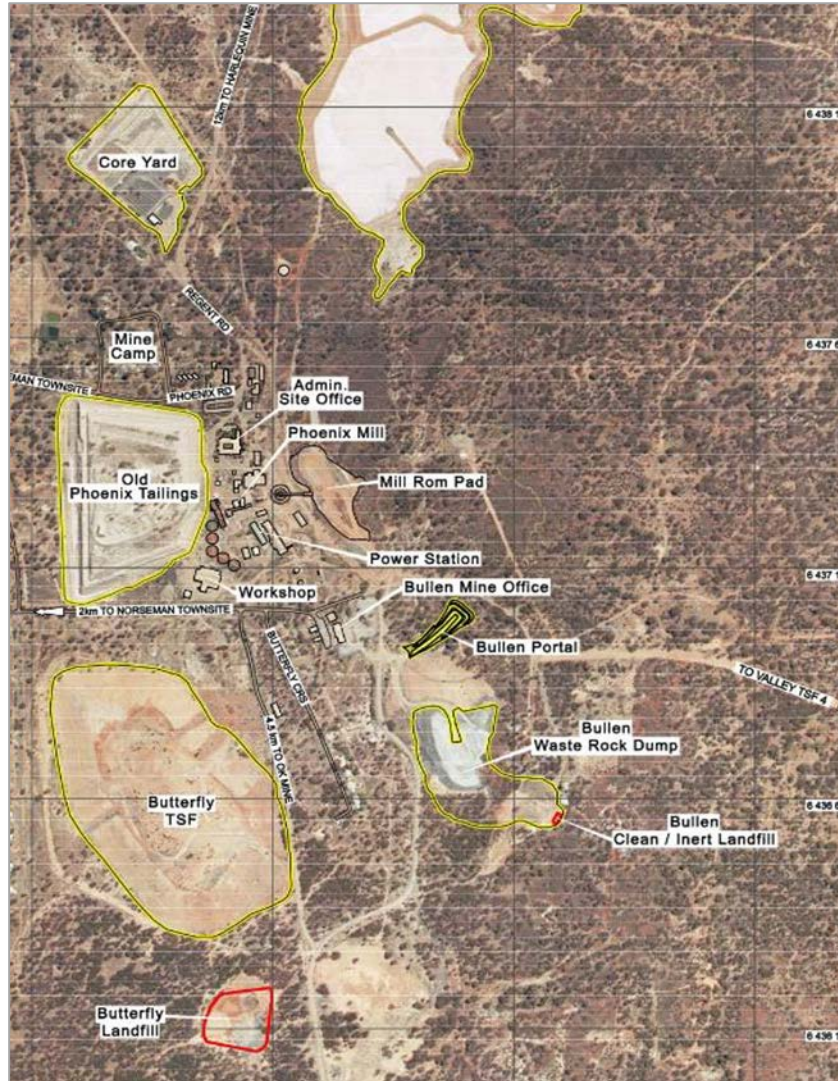
Project Details

Location	<ul style="list-style-type: none"> • Eastern Goldfields of Western Australia • Southern end of the Norseman-Wiluna greenstone belt • Tier 1 location in the Eastern Goldfields, ~725 km east of Perth, ~200 km south of Kalgoorlie and ~200 km north of Esperance
History	<ul style="list-style-type: none"> • Gold first discovered in the area in 1894 • WMC, via its subsidiary CNGC, commenced mining operations at the Norseman Gold Project in 1935 • In 2002, Croesus Mining purchased WMC's 50.5% share for \$75 million • In 2007, Norseman Gold Plc acquired CNGC from Croesus Mining • Tulla Private Group acquired equity in Norseman Gold Plc and \$10M in convertible notes in 2012 • 2014 Mineral Resource base of ~2.1 Moz (significantly enhanced by 2020) • In 2019, Pantoro acquired a 50% farm-in and joint venture interest in the Norseman Gold Project and entered into a FJVA • In October 2020, Pantoro finalized a Definitive Feasibility Study • December 2020 Norseman Gold Plc renamed Tulla Resources Plc • 17 March 2021 admitted to the ASX • April 2021 unincorporated JV commenced with Pantoro • December 2021 - Lithium Farm-In with Mineral Resources Limited and Pantoro announced • January 2022 - Non-binding Off take and funding arrangement with Koch Metals Limited announced
Tenure & Resource	<ul style="list-style-type: none"> • Near-contiguous package of 152 granted (and pending) Tenements, 70 km strike length covering the highly prospective greenstone belt • Extensive Mineral Resource comprising a number of high-grade underground deposits and open pit mining opportunities • Current Mineral Resource of 42 kt @ 3.4 g/t Au for 4.5 Moz (100% basis) • Less than 30% of the global Mineral Resources delineated • Majority of Mineral Resources are on granted mining leases
Infrastructure	<ul style="list-style-type: none"> • Project is adjacent to Norseman township with existing infrastructure in place including workshop complexes, site laboratory, 10 megawatt power station, bore fields, road network and an airfield • GR Engineering Services commenced 1.0 Mtpa Plant construction • New co-living accommodation in Norseman opened
Exploration	<ul style="list-style-type: none"> • Exploration program underway to test extensions to existing resources and test new targets • Ability to ramp up exploration on a success-driven basis
Production	<ul style="list-style-type: none"> • Production over initial 7-year project life anticipated to commence 2H 2022 • Reviewing mine plan to increase ounces and extend LOM • Initial gold from plant clean-up - 65,000 t at 2.34 g/t for 2,450 oz circa \$6 million (Tulla Resources 50%) on ROM

Project Tenement Setting



Appendix 6: Infrastructure Location Map



Contact



Mark McIntosh

CFO

mark.mcintosh@tulla.com.au

+ 61 (0) 2 9095 4266

Stephen Maffey

Company Secretary / General Counsel

stephen.maffey@tulla.com.au