



**Minerals 260**

ASX : MI6

**Exploring Australia's most exciting new  
mineral province – the Julimar Region, WA**

David Richards  
Managing Director

**Bell Potter Unearthed 2022**

February 2022

# Important Notices and Disclaimer

## Forward Looking Statements

This presentation may contain forward-looking statements, guidance, forecasts, estimates, prospects, projections or statements in relation to future matters that may involve risks or uncertainties and may involve significant items of subjective judgement and assumptions of future events that may or may not eventuate (**Forward Statements**). Forward Statements can generally be identified by the use of forward looking words such as "anticipate", "estimates", "will", "should", "could", "may", "expects", "plans", "forecast", "target" or similar expressions. Forward Statements including indications, guidance or outlook on future revenues, distributions or financial position and performance or return or growth in underlying investments are provided as a general guide only and should not be relied upon as an indication or guarantee of future performance. To the extent that certain statements contained in this presentation may constitute 'Forward Statements' or statements about forward looking matters, then the information reflects the Company's (and no other party's) intent, belief or expectations as at the date of this presentation. No independent third party has reviewed the reasonableness of any such statements or assumptions. None of the Company, its related bodies corporate and their respective officers, directors, employees, advisers, partners, affiliates and agents (together, the **MI6 Parties**) represent or warrant that such Forward Statements will be achieved or will prove to be correct or gives any warranty, express or implied, as to the accuracy, completeness, likelihood of achievement or reasonableness of any Forward Statement contained in this presentation. Except as required by law or regulation, the Company assumes no obligation to release updates or revisions to Forward Statements to reflect any changes. Recipients should form their own views as to these matters and any assumptions on which any of the Forward Statements are based and not place reliance on such statements.

All dollar values are in Australian dollars (\$) or A\$) unless otherwise stated.

## Disclaimer

No party other than the Company has authorised, permitted or caused the issue, submission, dispatch or provision of this presentation, or takes any responsibility for, or makes or purports to make any statement, representation or undertaking in this presentation and there is no statement in this presentation that is based on any statement by any other party. No person, either as a director, partner or in the employment of the Company has any authority to make, imply, or give any representation or warranty whatsoever in relation to the information contained in this presentation. None of the MI6 Parties take any responsibility for any information in this presentation or any action taken by you on the basis of such information.

To the maximum extent permitted by law, the MI6 Parties:

- exclude and disclaim all liability, including (without limitation) any liability for fraud or negligence, for any expenses, losses, damages or costs incurred either as a result of the information in this presentation being inaccurate or incomplete in any way for any reason, or otherwise arising in connection with this presentation; and
- make no representation or warranty, express or implied, as to the currency, accuracy, reliability or completeness of information in this presentation.

## The Information in this Report that relates to Exploration Results is extracted from:

- Minerals 260 Limited ASX announcement titled "Minerals 260 commences inaugural drilling program at its 100%-owned Moora Gold-PGE\*-Nickel-Copper Project, WA" released on 4 November 2021;
- Minerals 260 Limited ASX announcement titled "Minerals 260 accelerates initial \$6.7m exploration program at the Moora and Koojan Gold-PGE\*-Nickel-Copper Projects, WA" released on 7 December 2021;
- Minerals 260 Limited ASX announcement titled "Multiple zones of gold mineralisation intersected in initial follow-up drilling at Moora" released on 7 December 2021; and
- the Minerals 260 Limited Prospectus dated 19 August 2021

which are available on [www.minerals260.com.au](http://www.minerals260.com.au)

and

- Liontown Resources Limited ASX announcement titled "Strong PGE and gold anomalism confirmed at the Koojan JV Project, WA" released on 14 July 2021

which is available on [www.ltresources.com.au](http://www.ltresources.com.au).

The Company confirms that it is not aware of any new information or data that materially affects the information included in the original market announcements and that all material assumptions and technical parameters underpinning the estimates or production targets or forecast financial information derived from a production target (as applicable) in the relevant market announcements continue to apply and have not materially changed. The Company confirms that the form and context in which the Competent Person's findings are presented have not been materially modified from the original market announcements.

## Authorisation

This Presentation has been authorised for release by the Board.

# Quality Projects, Proven Board and Strong Financial Position

## KEY ASSET

### Moora/Koojan JV Projects (Gold-PGE-Nickel-Copper)

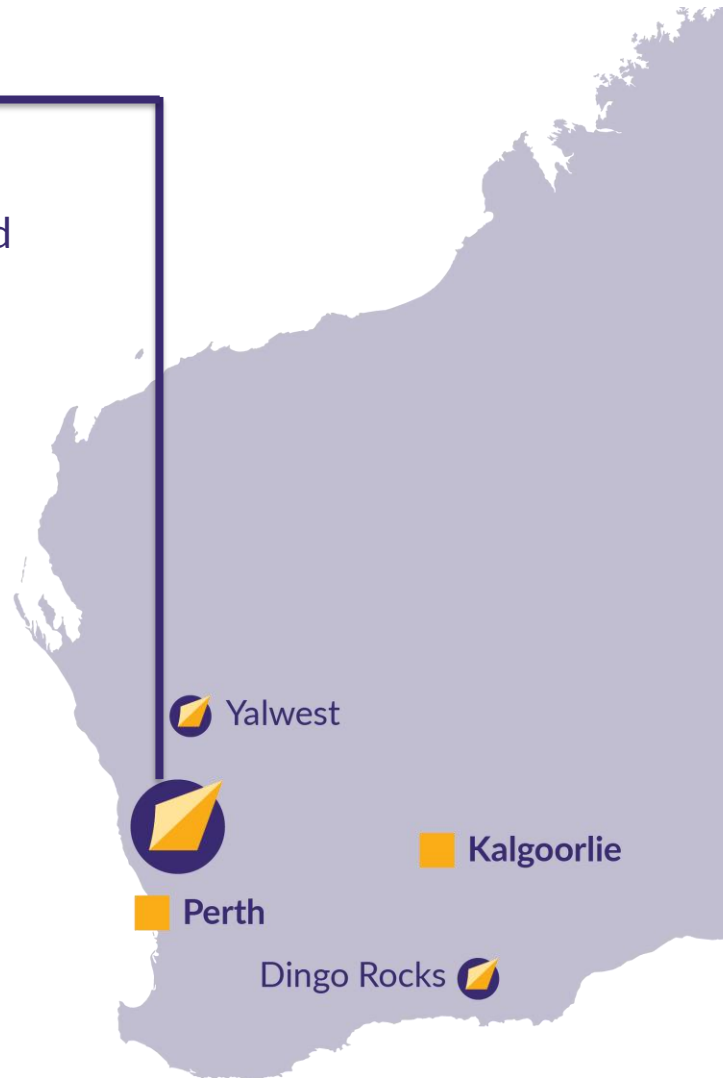
Emerging mineral province following discovery of Julimar PGE-nickel-copper-gold system

- ~1,000km<sup>2</sup>
- Previously unexplored
- Strong early drilling results
- \$6.7million exploration program in progress

#### Corporate Snapshot

ASX CODE: MI6

Shares on Issue	220M
Market Capitalisation	\$110M (at 50cps)
Top 20 Shareholders	~35%
Directors	~17%
Cash (31/12/2021)	~\$27.3M



### Anthony Cipriano

Chairman

+30 years (Chartered Accountant)  
Director of Liontown Resources and  
Former Senior Partner at Deloitte



### David Richards

Managing Director

+35 years (Geologist) Discovered  
Kathleen Valley Lithium Deposit  
and Vera Nancy Gold Deposits



### Tim Goyder

Non-Executive Director

+40 years (Mining Executive) Chairman  
and Major Shareholder Liontown  
Resources and Chalice Mining



### Craig Williams

Non-Executive Director

+40 years (Geologist) Director of  
Liontown Resources and Co-founder  
and CEO of Equinox Minerals



### Emma Scotney

Non-Executive Director

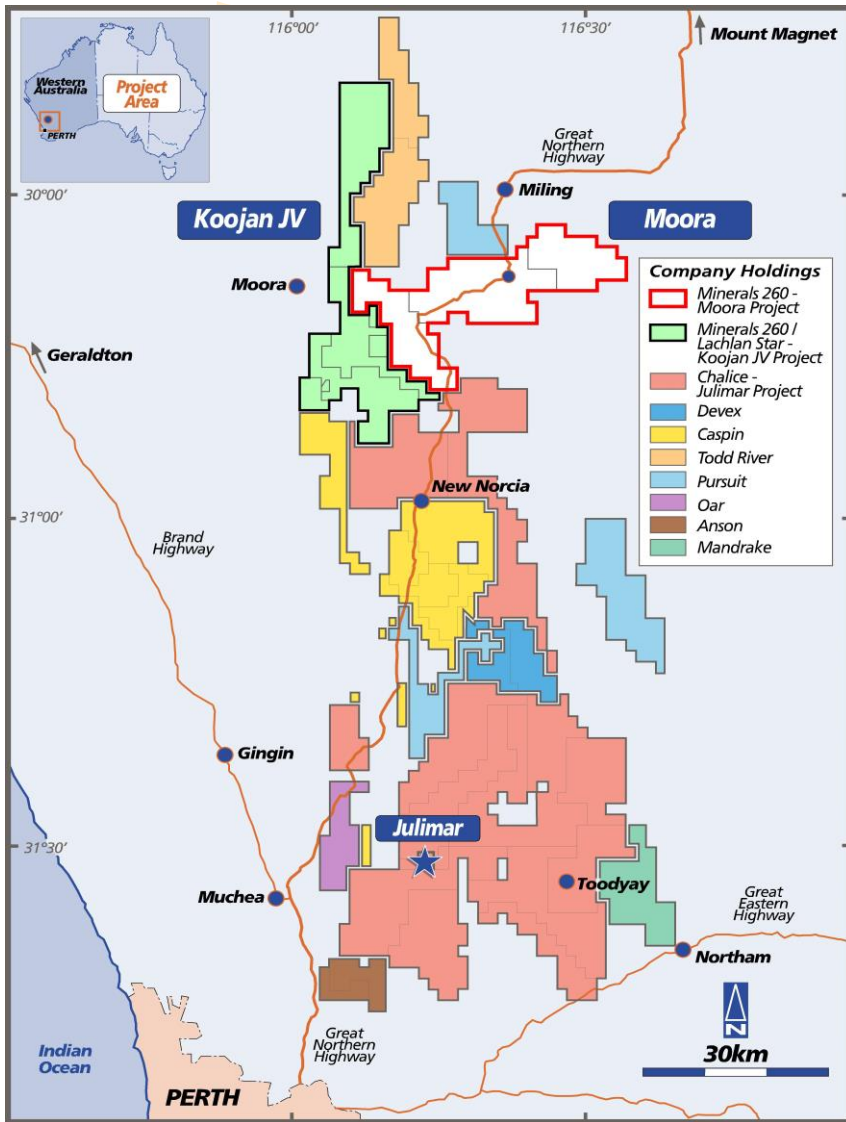
+25 years (Lawyer) Director of large  
private commercial and cropping  
enterprise

# The Moora and Koojan JV Projects

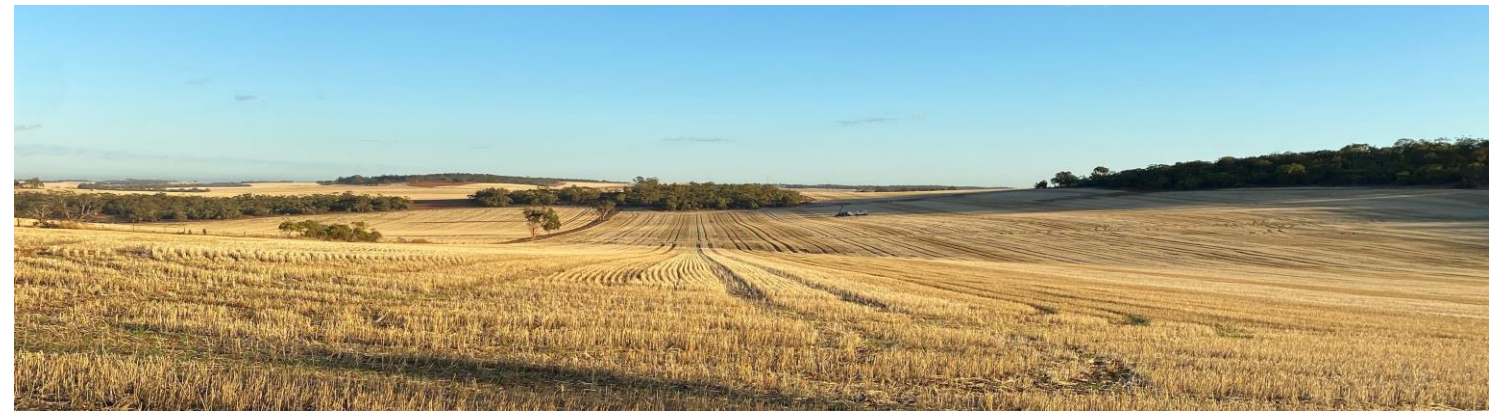
---



# Strategic Holding in an Emerging Precious and Base Metal Province



- Significant land position (~1,000km<sup>2</sup>)
- Early movers in the region
- Largely unexplored prior to current tenement holding
- Ore grades and widths intersected in maiden drilling program
- Assays pending for 33 holes of a 37 hole/6,200m follow up drilling program



# Prospective Trends

## Julimar Trend

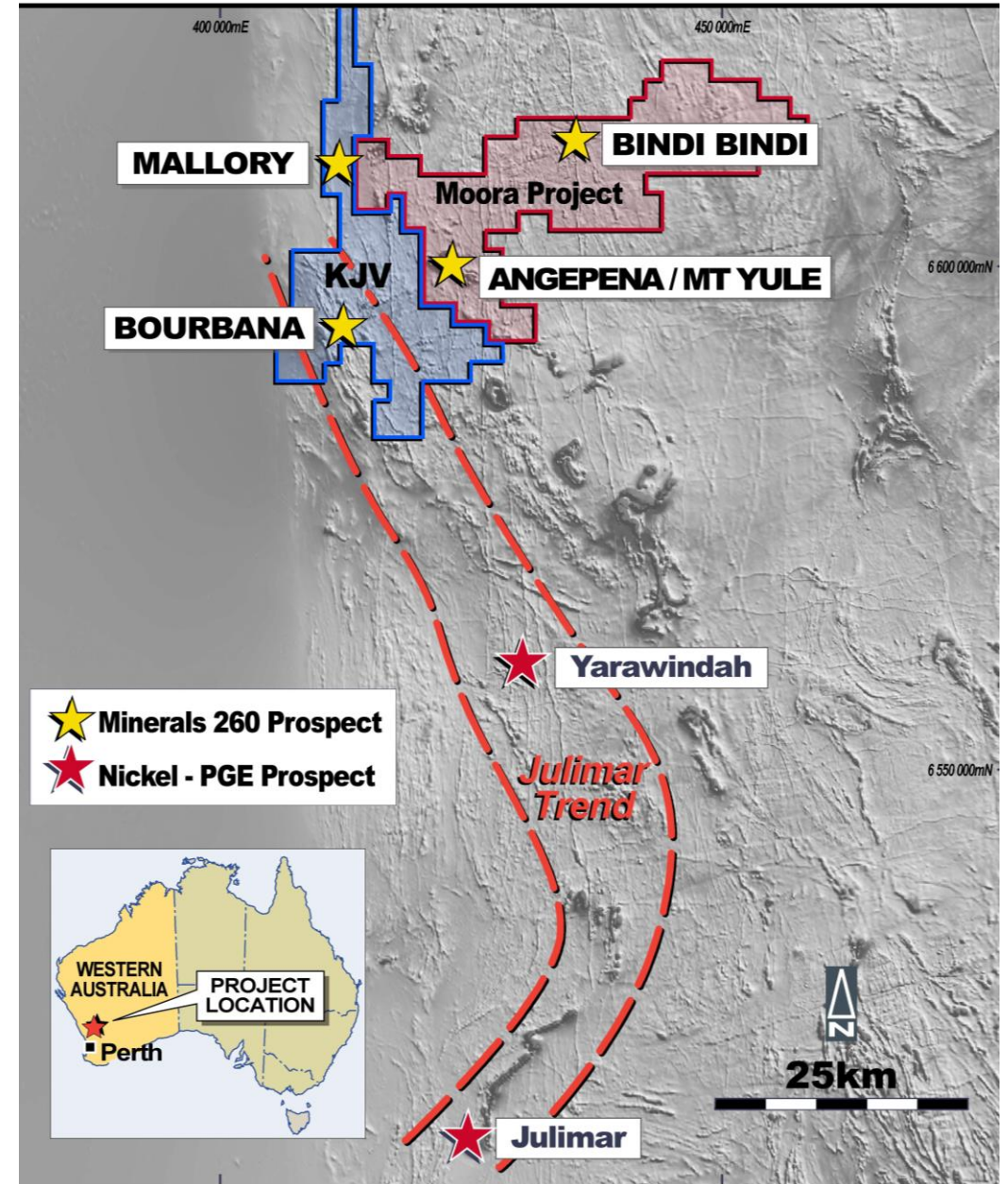
- Multiple geochemical anomalies
- IP and aeromagnetic programs in progress
- EM, gravity and infill geochemical programs pending

## Mt Yule Corridor (MYC)

- Parallel trend – similar geophysical character
- Initial exploration focus – significant gold, copper and cobalt intersected
- Assays pending for follow up drilling program

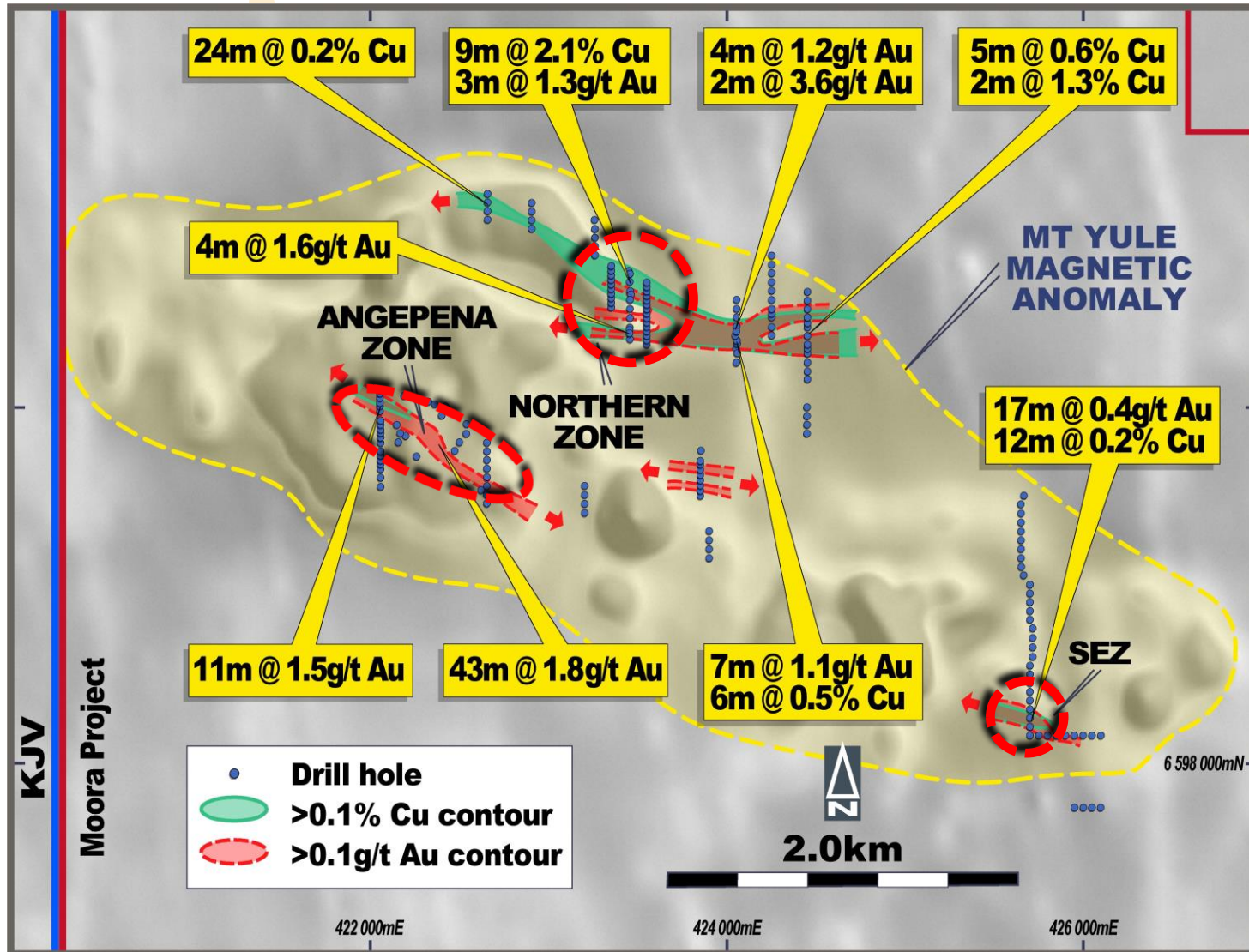
## Bindi Bindi Nickel Trend

- Historic Poseidon (1968) drill intersections up to 21m @ 0.6% Ni from surface



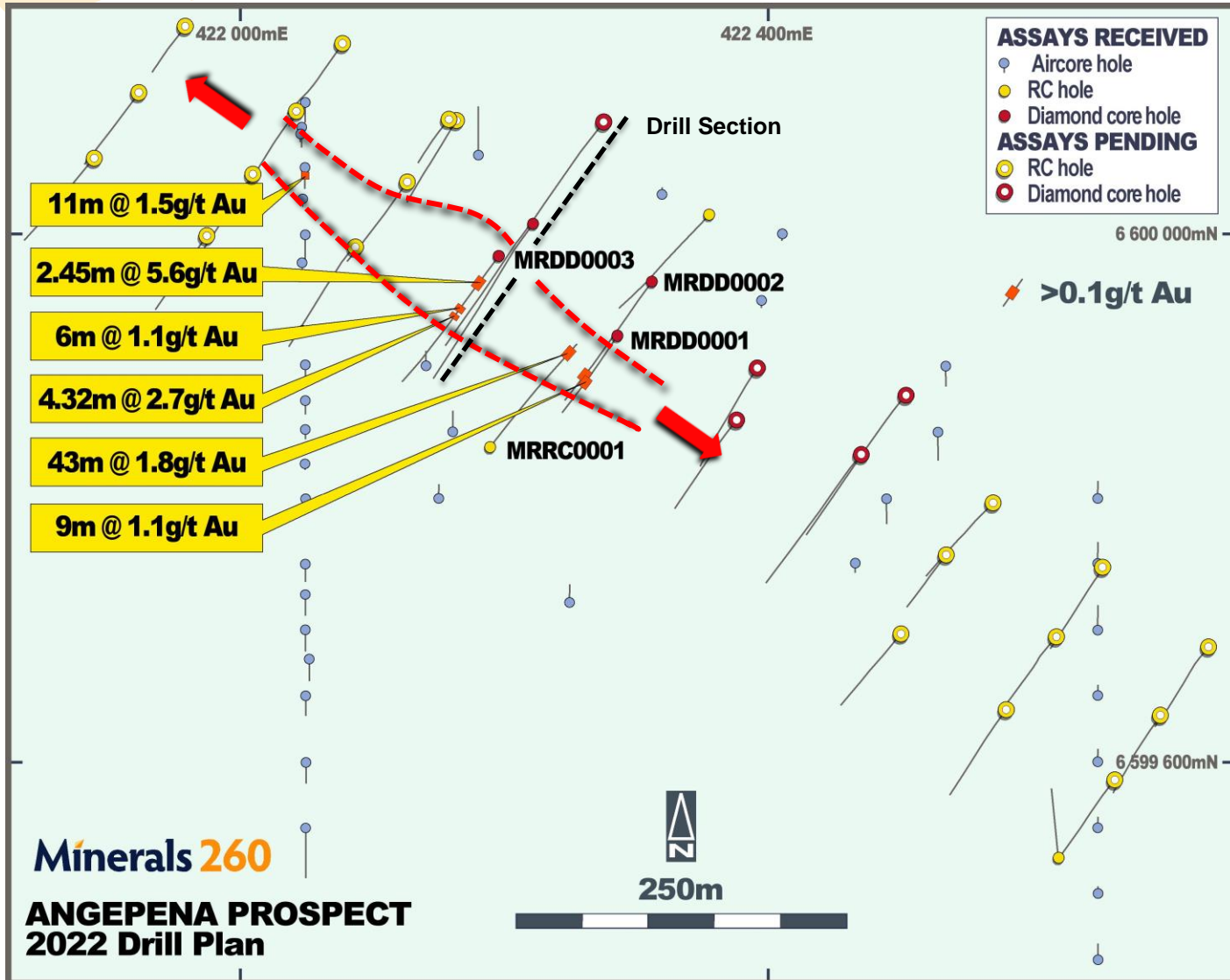
Regional Magnetic Image

# Mt Yule Magnetic Anomaly (100%)

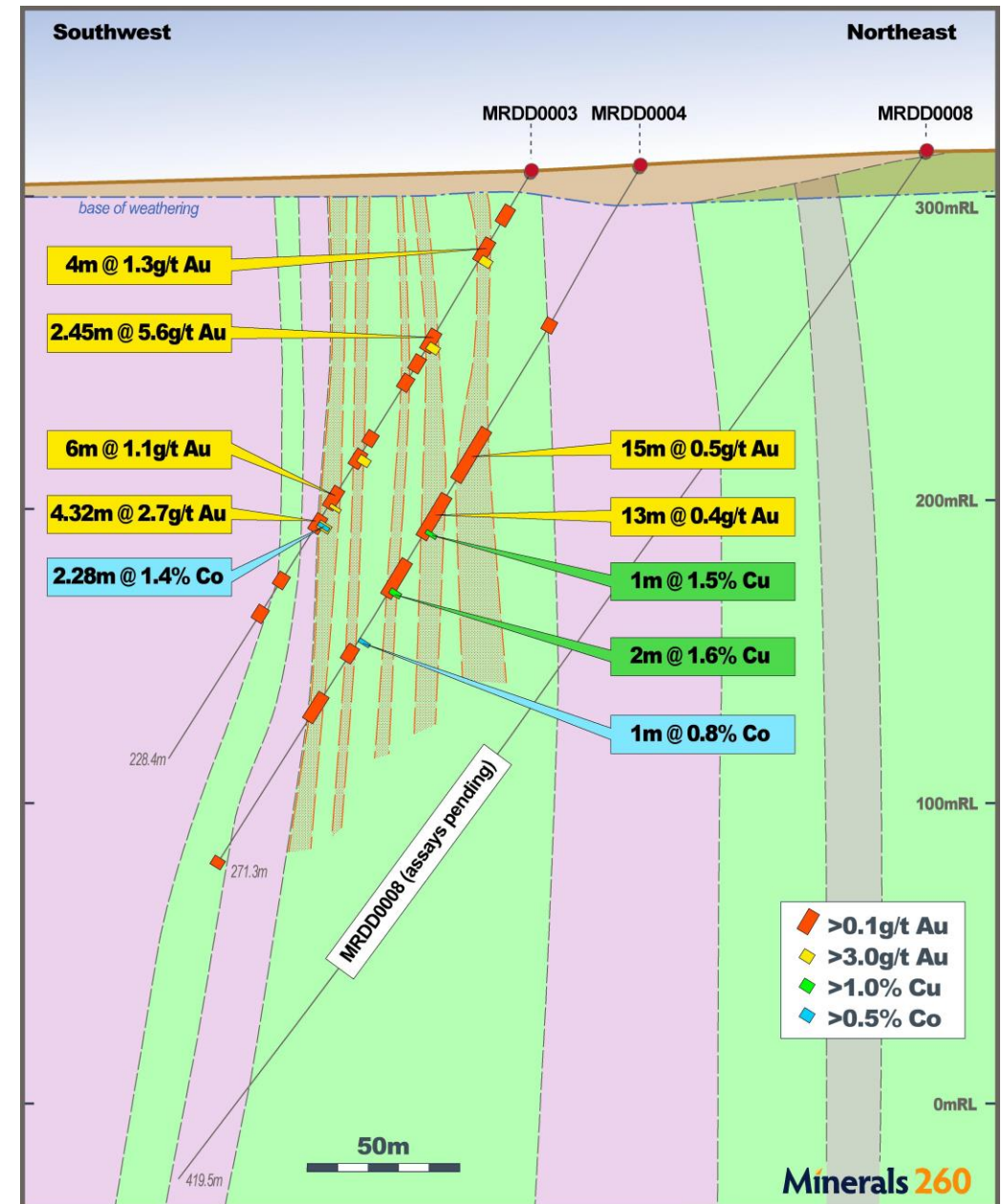


- Large (7x2.5km) magnetic anomaly
- Previous work (2020/2021) defined:
  - ▀ Angepena (Au)
    - +900m long zone
    - up to 43m @ 1.8g/t Au
    - Plus copper and cobalt
  - ▀ Northern (Cu/Au)
    - +2km long zone
    - Multiple copper-gold intersections
    - Up to 9m @ 2.1% Cu and 7m @ 1.1g/t Au
  - ▀ SEZ (Au/Cu)
    - Up to 17m @ 0.4g/t Au and 12m @ 0.2% Cu (EoH)
- Assays pending for 33 holes from recently completed 37 hole/6,196m RC/Diamond Core drilling program
- All trends remain open

# Angepena Gold Prospect



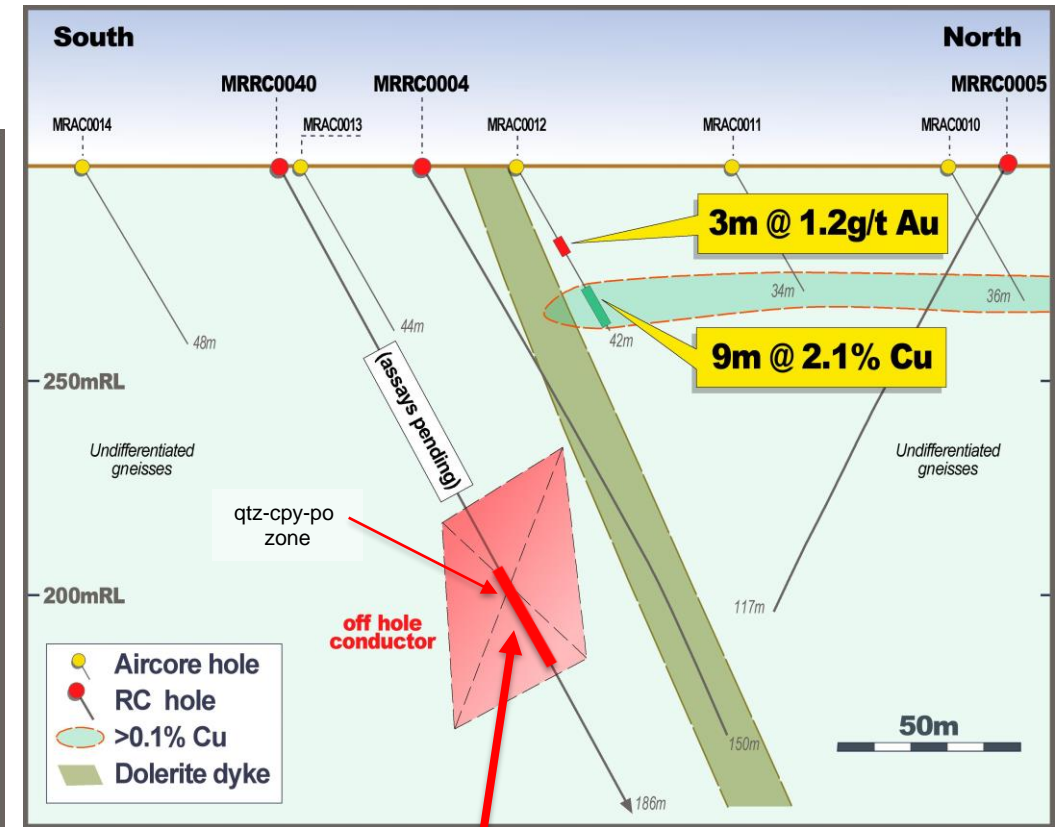
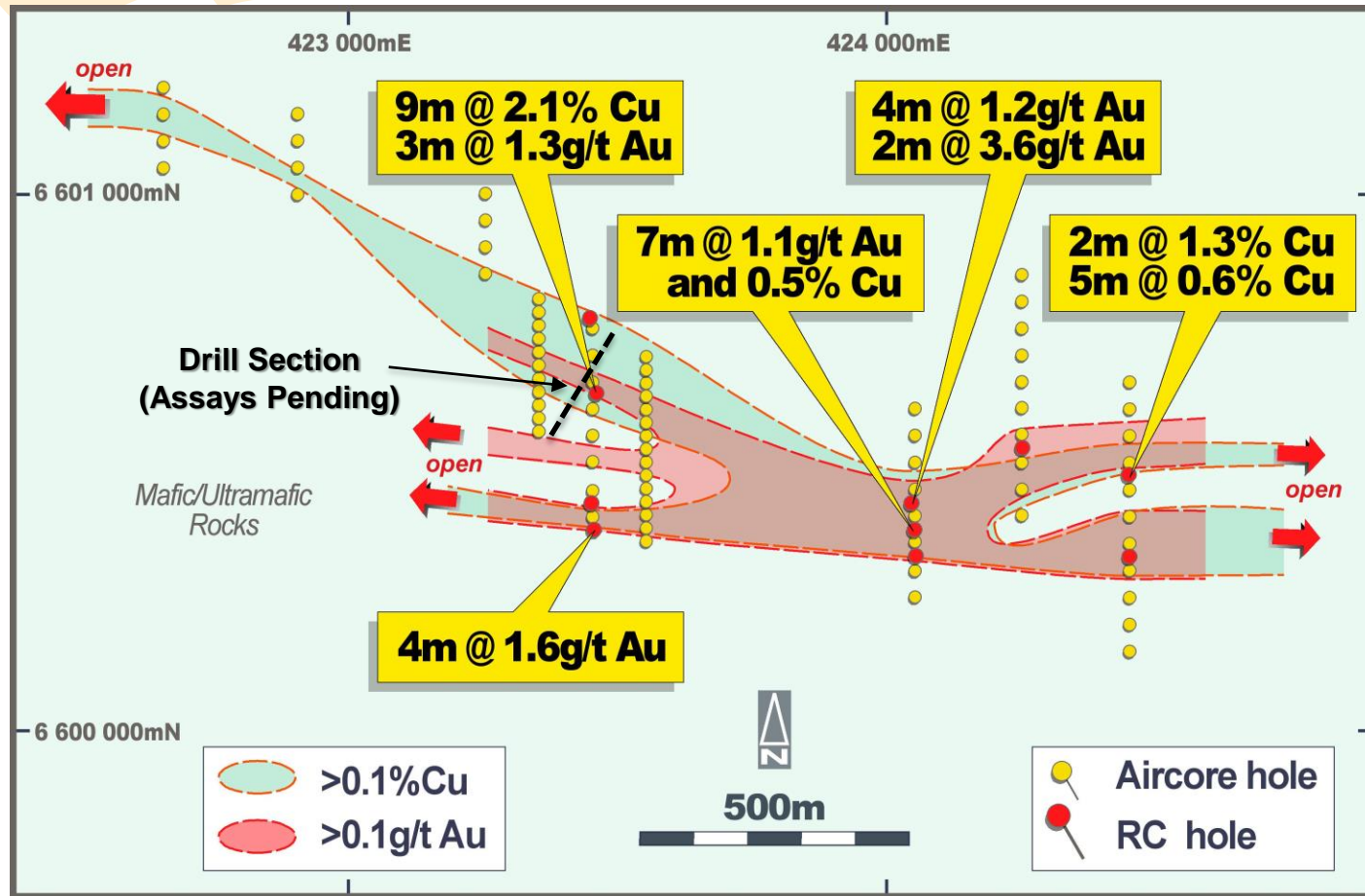
Mineralisation open- assays pending for 33 drill holes



Potential for copper/cobalt credits



# Northern Copper/Gold Zone

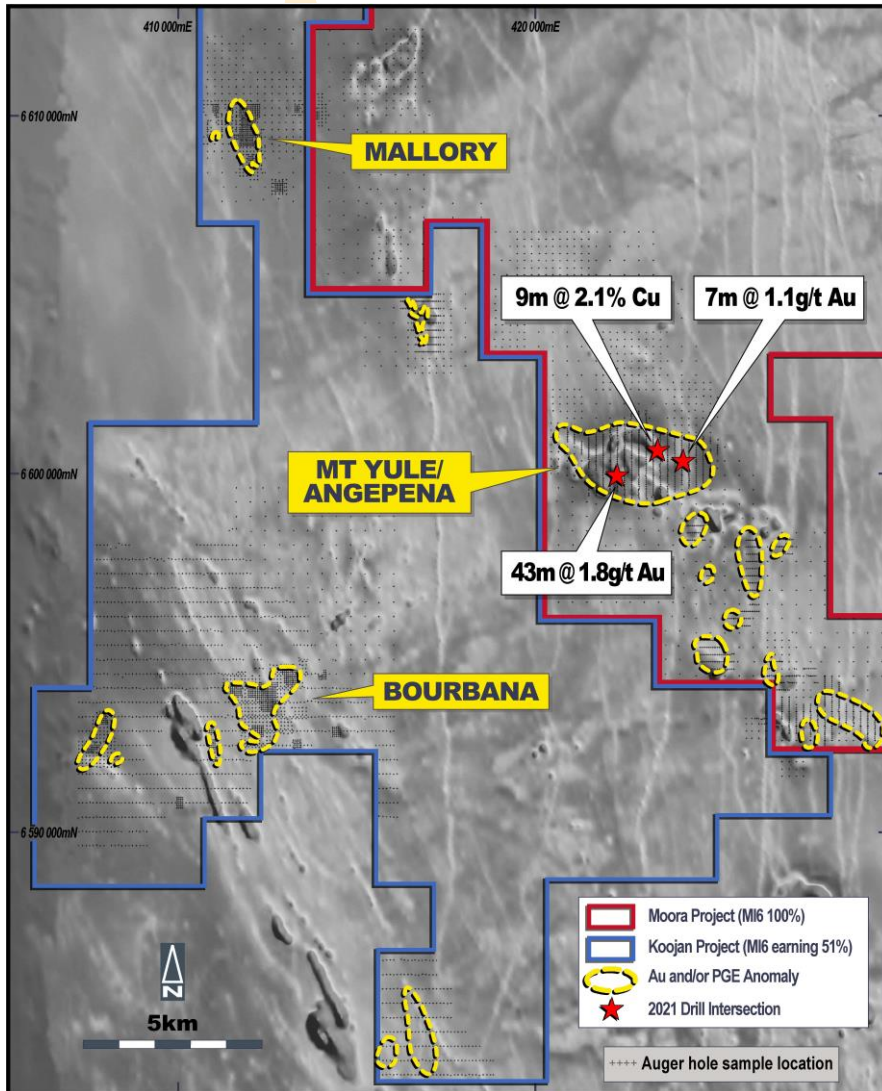


20m thick quartz-chalcopyrite-pyrrhotite zone intersected coincident with off hole conductor (assays pending)

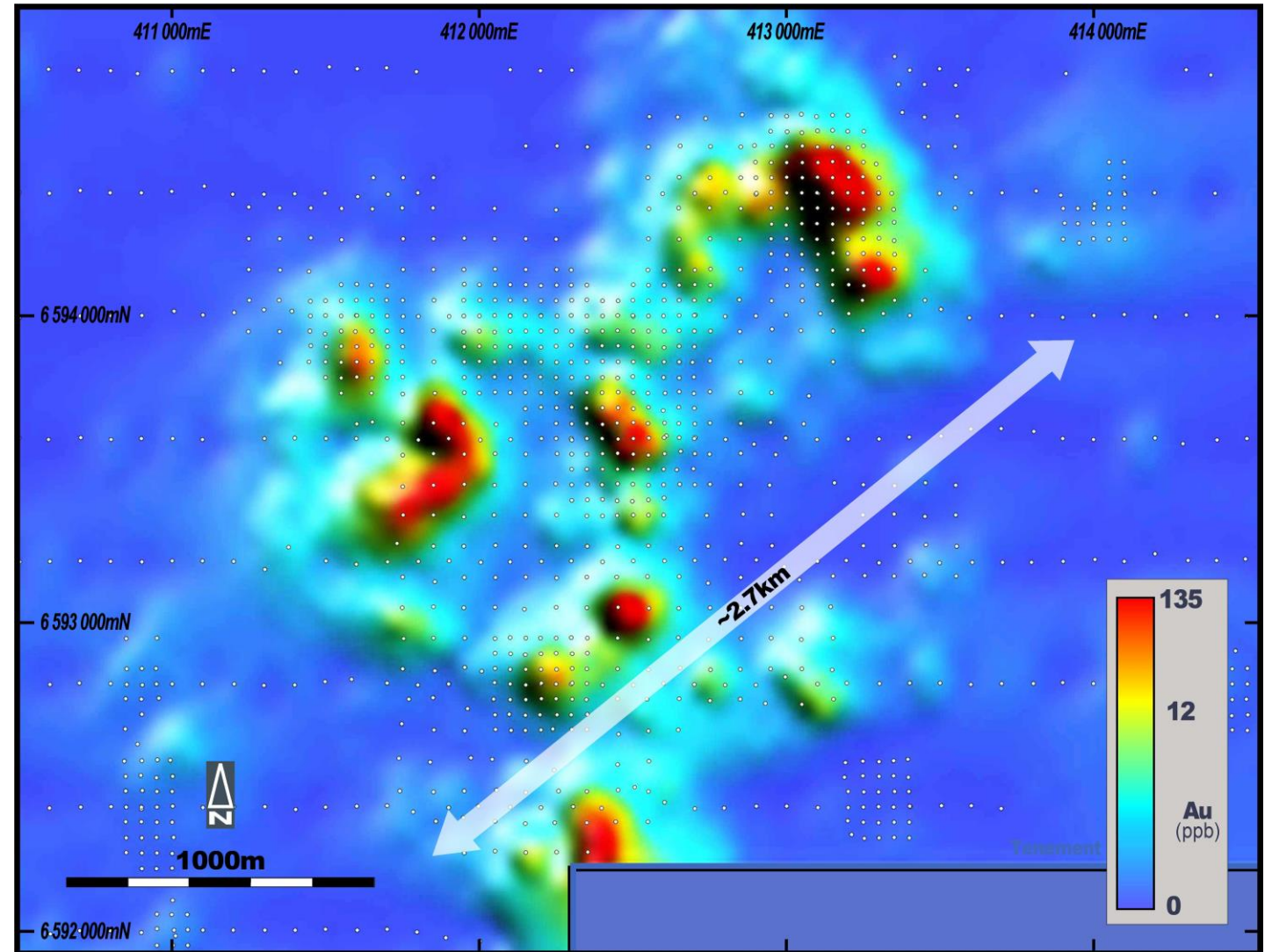


# Koojan JV (Right to earn 51%)

## Geophysical follow-up of geochemical anomalies in progress

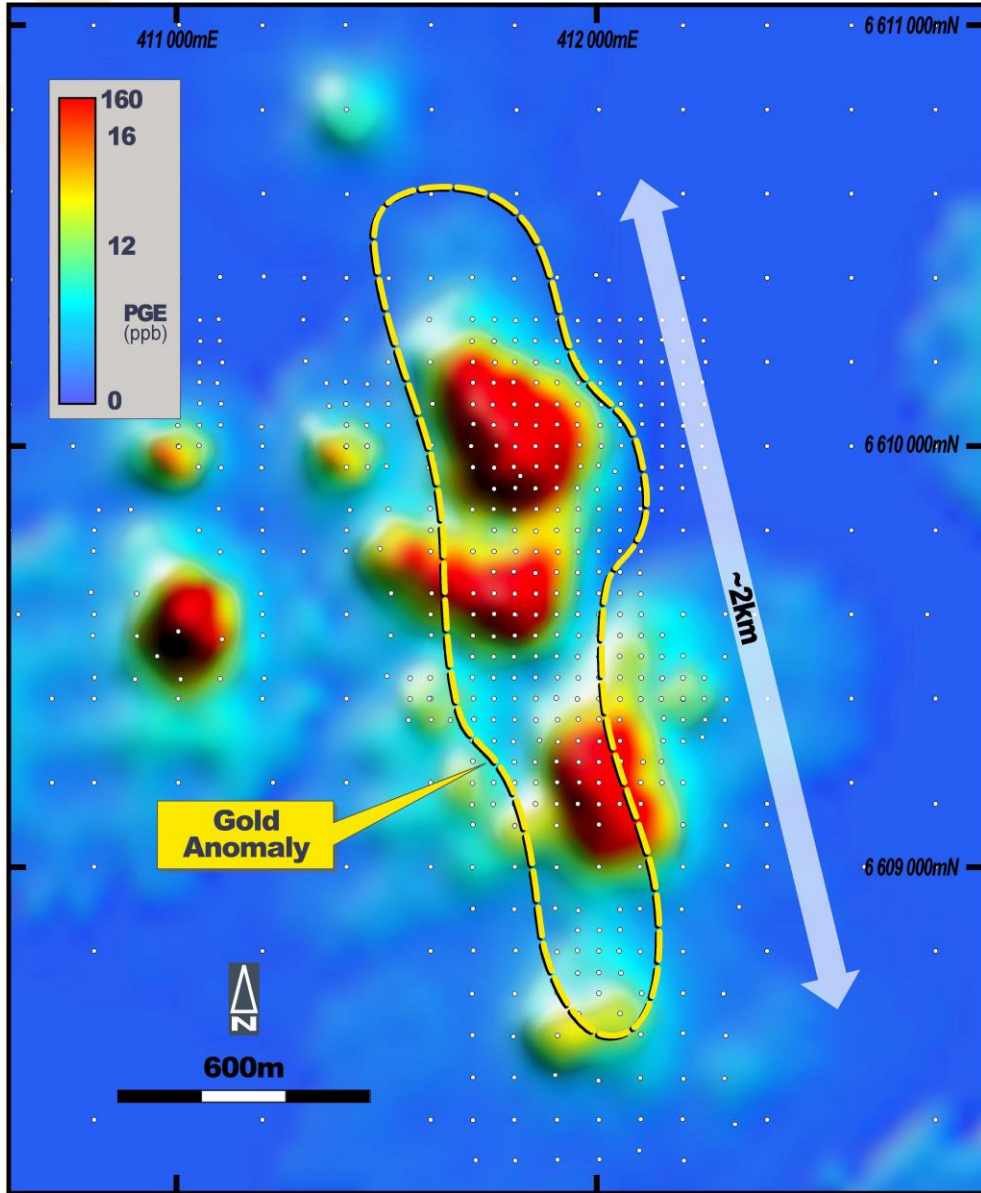


Geochemical Anomalies

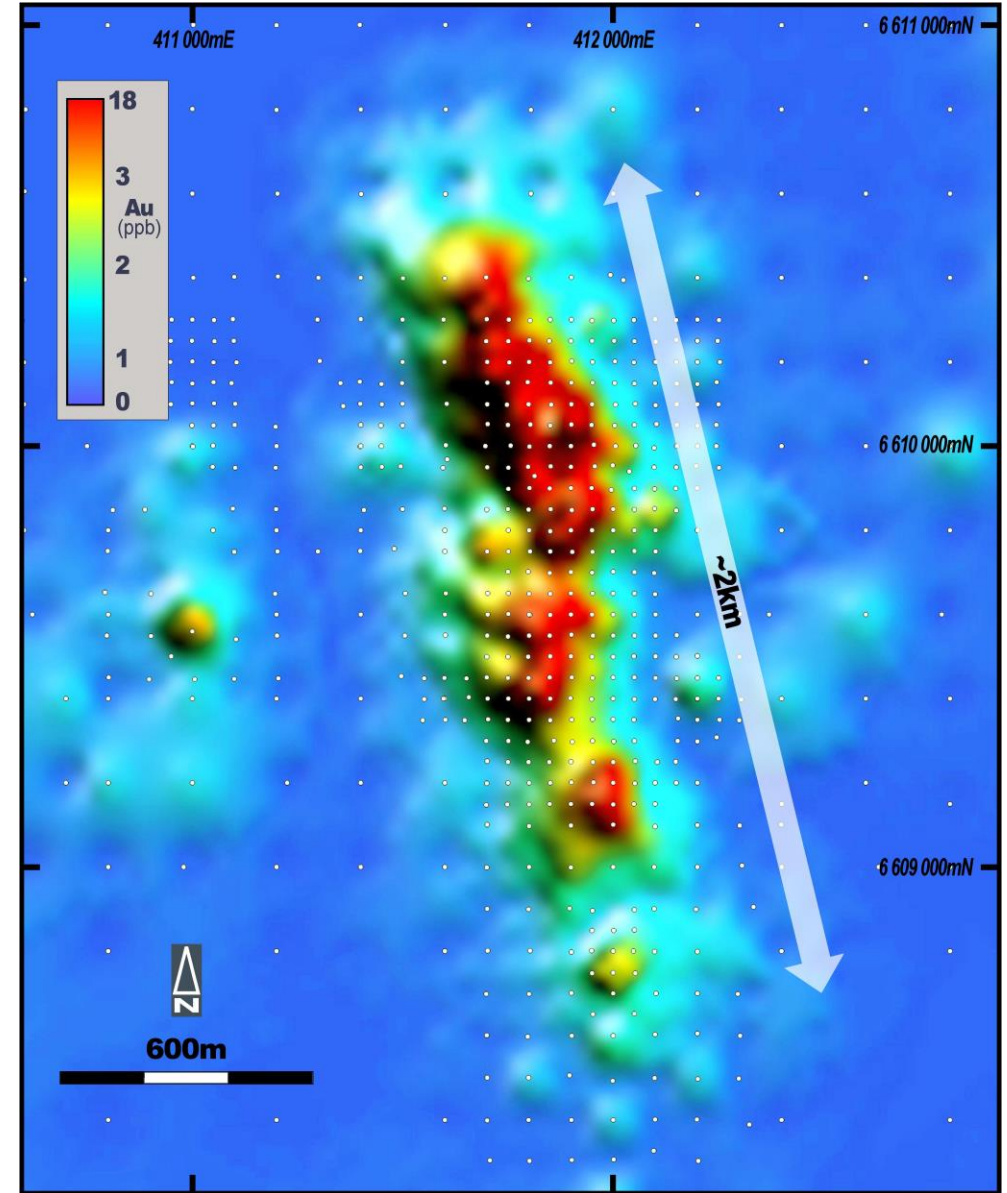


Bourbana Anomaly - Gold image

# Koojan JV/Mallory – coincident PGE/Gold target



Mallory Anomaly – PGE image



Mallory Anomaly – Gold image

# Priorities for next 6 months\*

## Mt Yule Magnetic Anomaly

- IP
- MLEM and downhole EM
- Process drill assays
- RC/DD drilling (March/April/May 2022)

## Greater Moora/Koojan JV Area

- Prioritise other targets
  - Detailed aeromagnetic survey
  - Ground IP/EM surveys
  - Ground gravity survey (~3,000 stations)
  - Define PGE/Ni/Cu vectors
- Infill/first pass geochemical sampling (~6,000 samples)
- Drill testing of new targets

Activity	Quantity	2021		2022					
		Nov	Dec	Jan	Feb	Mar	Apr	May	Jun
Core Drilling P1	2,300m	█	█	█					
Core Drilling P2	2,000m						█	█	█
RC Drilling P1	4,000m		█	█					
RC Drilling P2	7,300m					█	█	█	
Aircore Drilling	6,000m				█	█			
Geochemistry	6,800 samples				█	█	█	█	
Gradient Array IP	14 arrays/20km <sup>2</sup>		█	█	█				
Ground EM	36 line km					█	█		
Aeromagnetics	10,800 line km				█				
Gravity	2,294 stations				█	█			

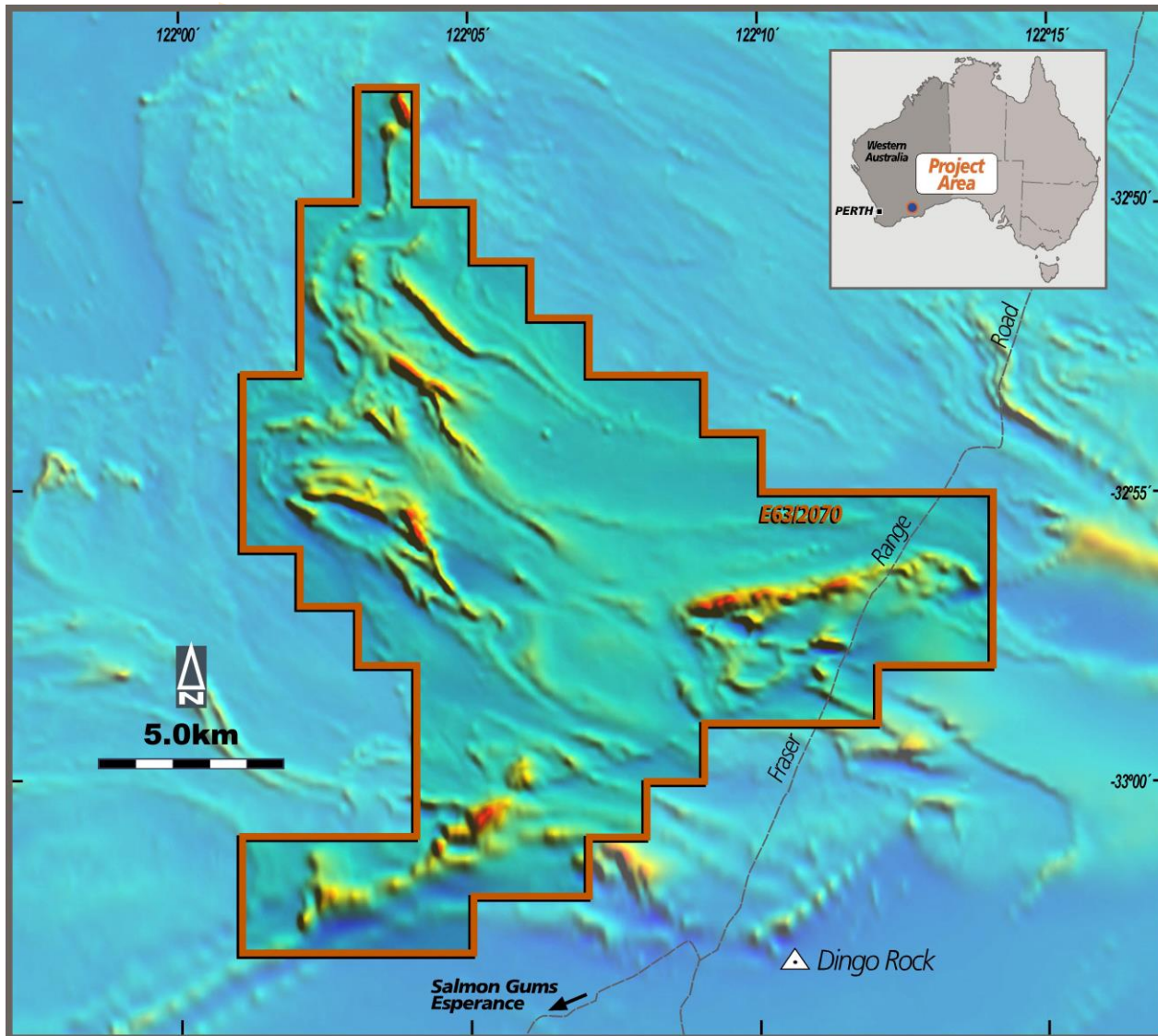
\* All future programs subject to ongoing exploration results

# Other Projects Dingo Rocks and Yalwest

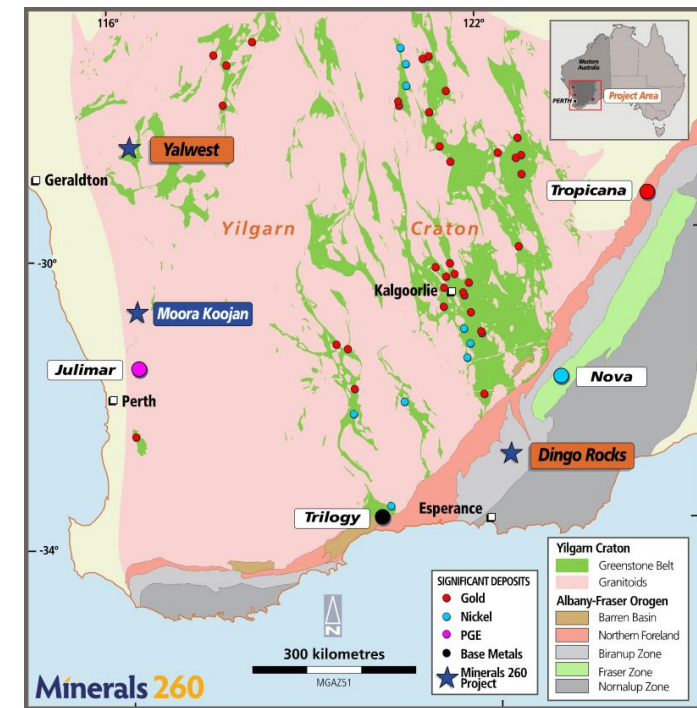
---



# Dingo Rocks – Albany Fraser Province

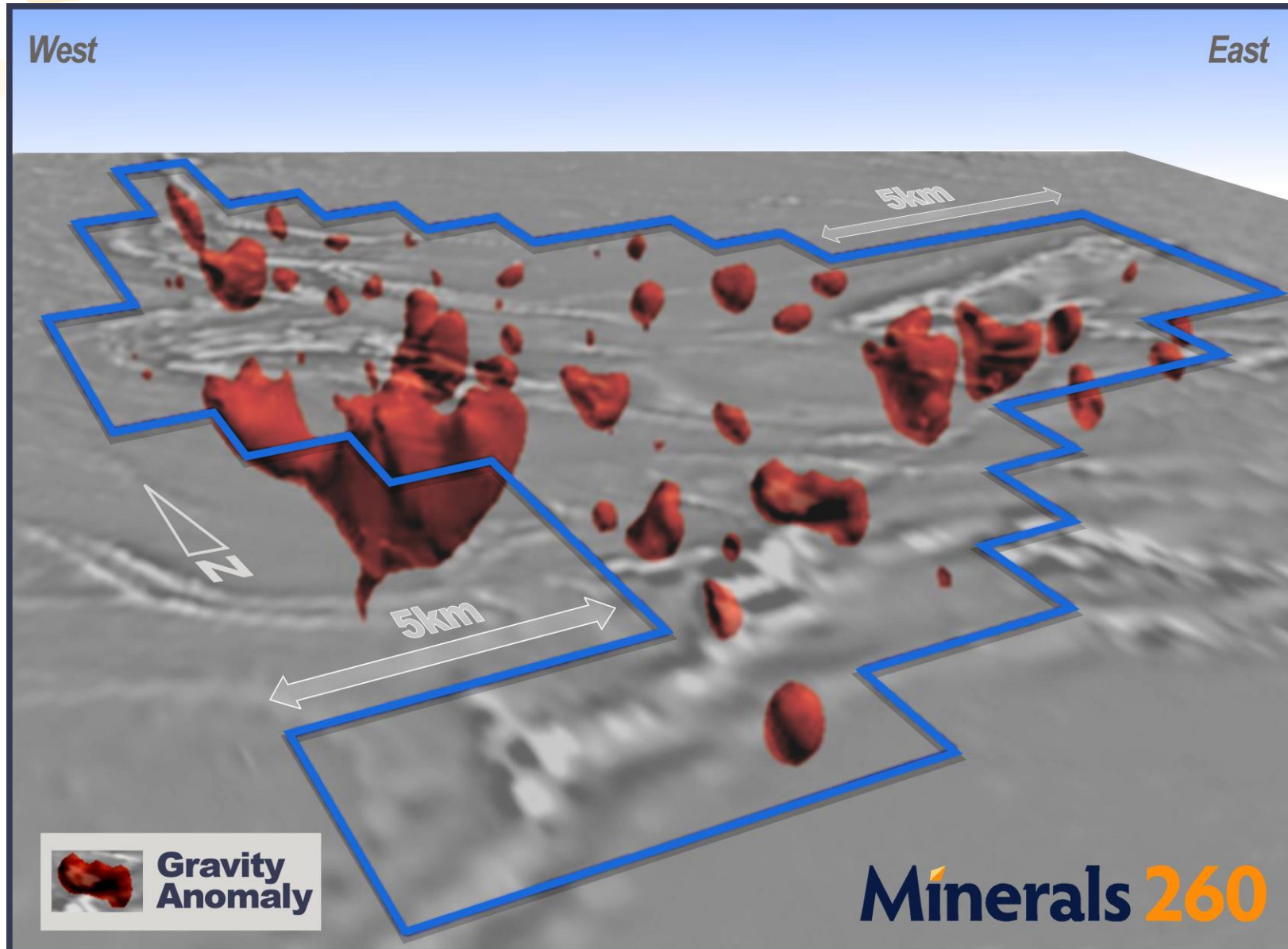


Magnetic Image



- Located within Albany Fraser Province marginal to Archaean Yilgarn Craton
- Prospective geology largely obscured by transported cover
- Magnetic highs untested by previous exploration
- Gravity survey confirms potential for dense, mafic/ultramafic units

# Dingo Rocks – Gravity Survey

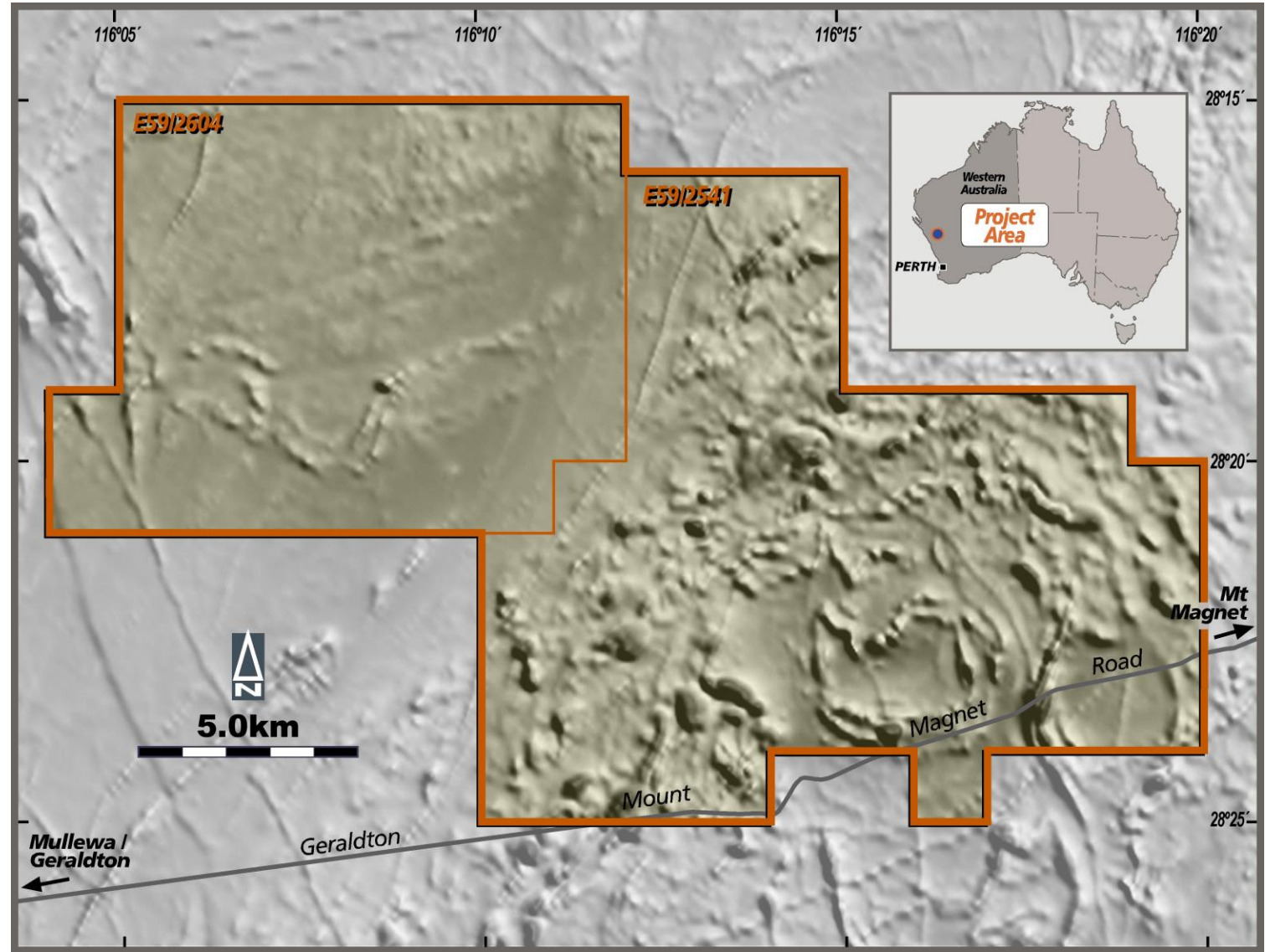
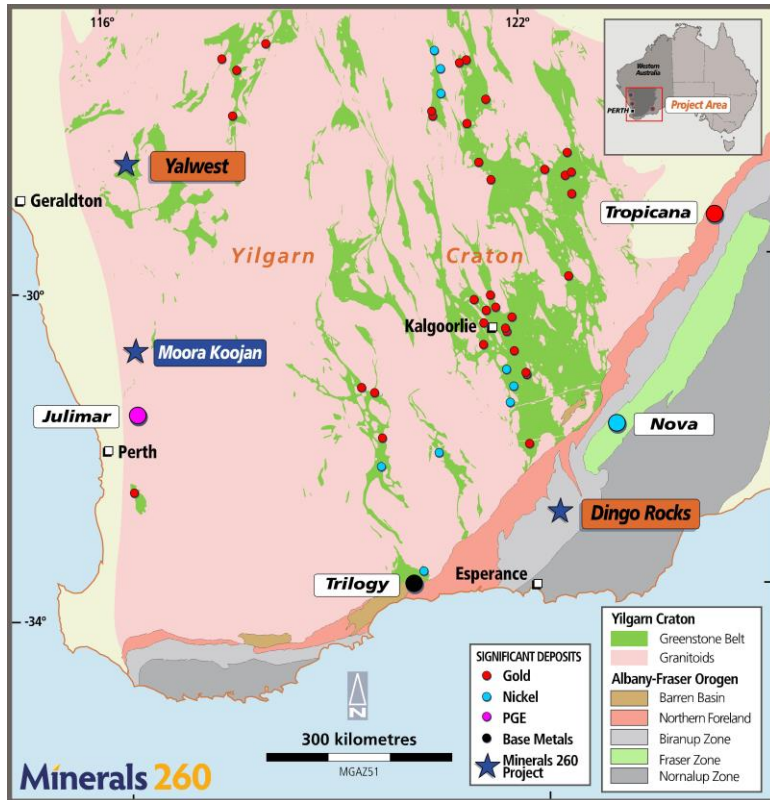


400 x 400m gravity data confirms presence of denser rocks – possibly mafic/ultramafic intrusions

Follow up geophysical programs being planned

# Yalwest – Murchison Province

- Located within Murchison Province of Archaean Yilgarn Craton
- Regional magnetic data indicate prospective greenstone lithologies
- No previous recorded exploration
- NT Agreement executed - awaiting tenement grant

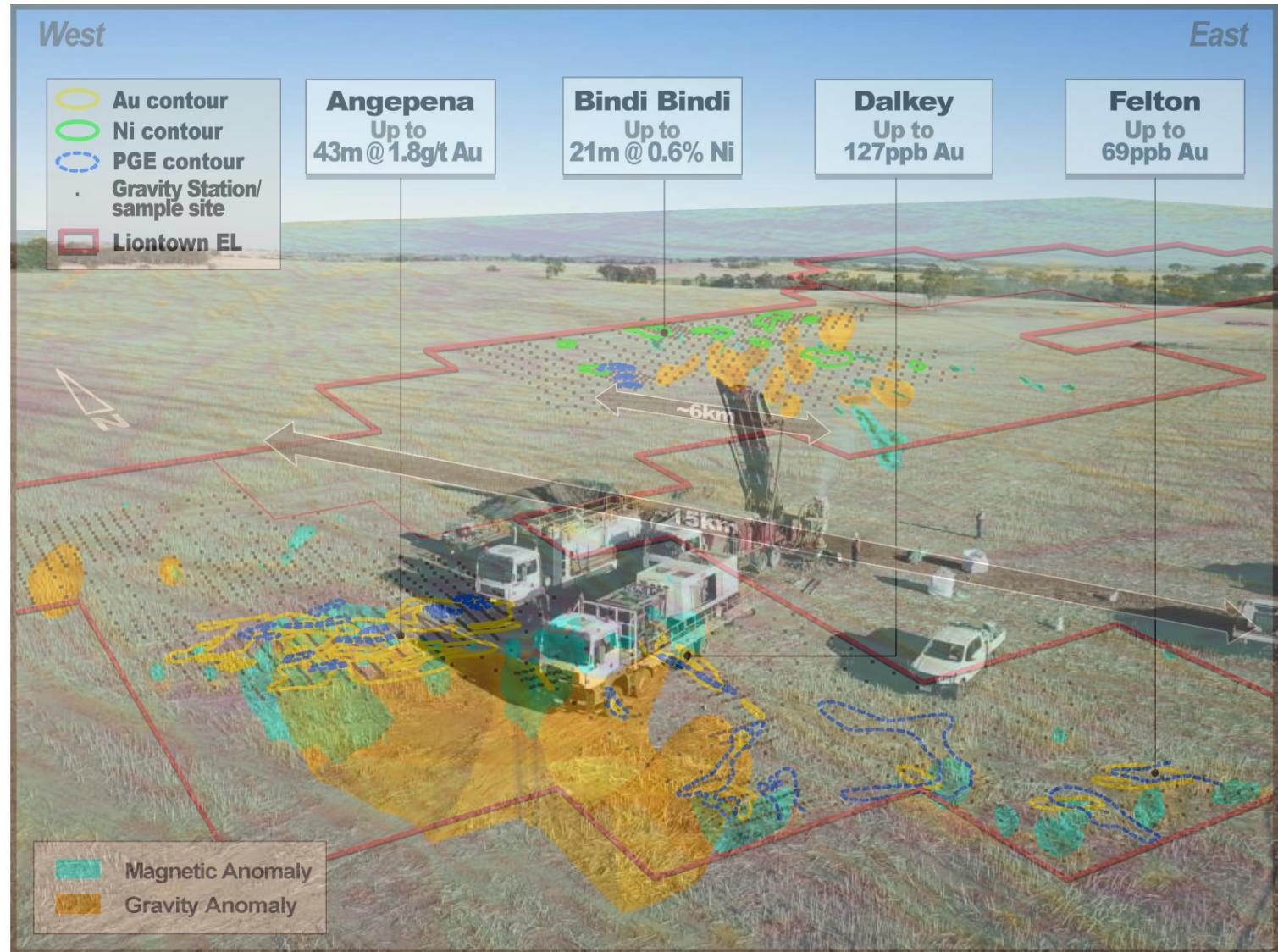


Magnetic Image



# Investment Case

- Early mover in emerging Julimar Mineral Province
- Initial drilling confirms potential for precious and base (battery) metal discoveries
- Strong target pipeline
- Key Land Access Agreements in place
- Largely unexplored
- Highly successful management, with proven track record of commercial discoveries
- Well funded (>\$27M)
- Mining friendly jurisdiction



# Thank You

---

**ASX : MI6**

**“Licensed to Drill”**

For more information please visit  
[www.minerals260.com.au](http://www.minerals260.com.au) or call:

---

David Richards  
Managing Director  
T: +61 8 6556 6020  
[info@minerals260.com.au](mailto:info@minerals260.com.au)

Anthony Cipriano  
Chairman  
T: +61 8 6556 6020  
[info@minerals260.com.au](mailto:info@minerals260.com.au)

