

# Grains Focus

## Monthly update on the Australian grains market



December, 2020

ASX EC PRICE (Jan21 EXPIRY) AND AGGREGATE TRADED VOLUME (Monthly)



Source: Bloomberg

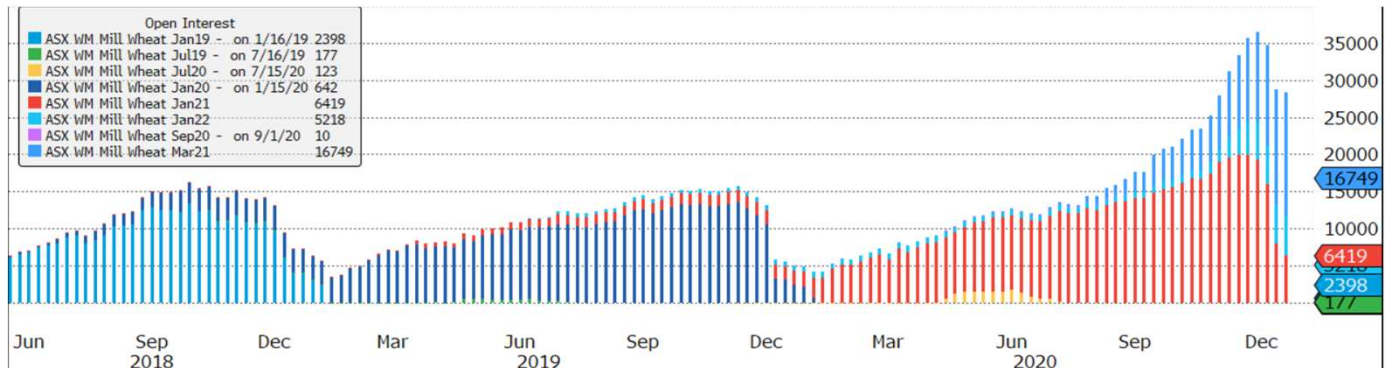
Start Date 20201201  
End Date 20201231

SHORT_NAME	QUOTE_UNITS	FUT_MONTH_YR	1M OPEN	1M HIGH	1M LOW	1M CLOSE	Chg	%Chng	OPEN_INT
ASX WM Mill Wheat Jan21	AUD/MT	JAN 21	285.00	292	269	291	6.00	2.105	6419
ASX WM Mill Wheat Mar21	AUD/MT	MAR 21	289.00	297	274.5	295	6.00	2.076	16749
ASX WM Mill Wheat Jan22	AUD/MT	JAN 22	303.00	310.5	290	310.5	7.50	2.475	5218
ASX WA Mill Wheat Jan21	AUD/MT	JAN 21	320.00	320	320	320	0.00	0.000	0
FEED BARLEY FUT Jan21	AUD/MT	JAN 21	222.00	229.5	211.5	228.5	6.50	2.928	1232
FEED BARLEY FUT Mar21	AUD/MT	MAR 21	225.50	238.5	215	238.5	13.00	5.765	1690
FEED BARLEY FUT Jan22	AUD/MT	JAN 22	243.00	250	230.5	248	5.00	2.058	50
WHEAT FUTURE(CBT) Mar21	USD/bu.	MAR 21	585.00	644.5	565.5	640.5	55.50	9.487	193713
KC HRW WHEAT FUT Mar21	USD/bu.	MAR 21	547.25	606.5	530.75	603.5	56.25	10.279	122152
RED WHEAT FUT MGE Mar21	USD/bu.	MAR 21	553.50	600	542.5	599.25	45.75	8.266	39786
MILL WHEAT EURO Mar21	EUR/MT	MAR 21	206.75	214.5	199	213.25	6.50	3.144	233563
CORN FUTURE Mar21	USD/bu.	MAR 21	426.50	485.75	414.5	484	57.50	13.482	835996
SOYBEAN FUTURE Mar21	USD/bu.	MAR 21	1170.00	1320.75	1143	1311	141.00	12.051	410499
AUD-USD X-RATE		Spot	0.7344	0.7694	0.7371	0.7439	0.01	1.294	

Source: Bloomberg

### OPEN INTEREST SUMMARY

#### ASX EAST COAST WHEAT OPEN INTEREST (Weekly)



Source: Bloomberg

SHORT_NAME	OI beginning	OI ending	Monthly Chg	% Chg
ASX WM Mill Wheat Sep20	0	0	0	0.00
ASX WM Mill Wheat Jan21	19840	6419	-13421	-67.65
ASX WM Mill Wheat Mar21	10333	16749	6416	62.09
ASX WM Mill Wheat May21	691	2003	1312	0.00
ASX WM Mill Wheat Jan22	3461	5218	1757	50.77
ASX WM Mill Wheat Jan23	0	0	0	0.00

Source:Bloomberg

### ASX EC AGGREGATE OPEN INTEREST (Monthly)



Source:Bloomberg

### ASX BARLEY

SHORT_NAME	OPEN_INT
FEED BARLEY FUT Sep20	0
FEED BARLEY FUT Nov20	0
FEED BARLEY FUT Jan21	1232
FEED BARLEY FUT Mar21	1690
FEED BARLEY FUT May21	150
FEED BARLEY FUT Jan22	50

Source:Bloomberg

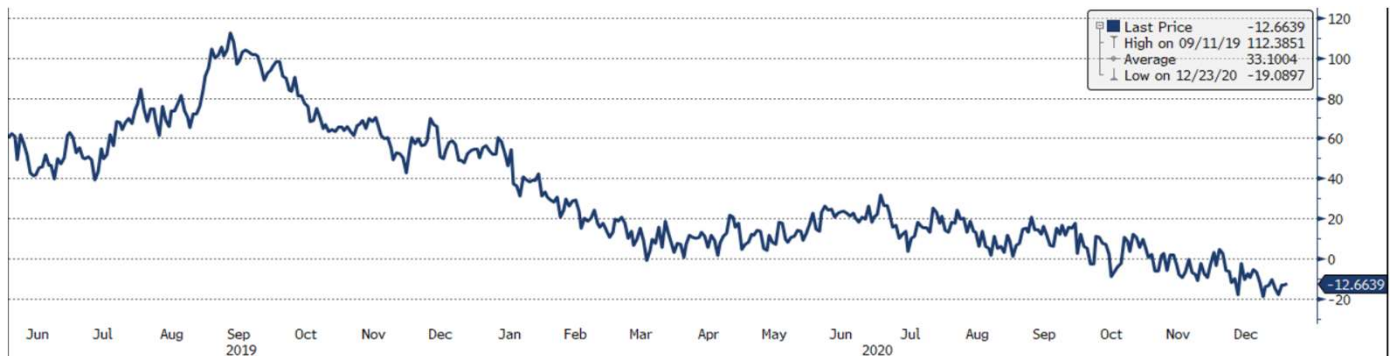
### ASX BARLEY AGGREGATE OPEN INTEREST (Monthly)



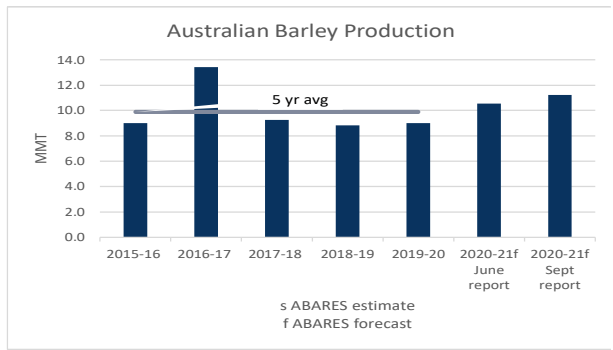
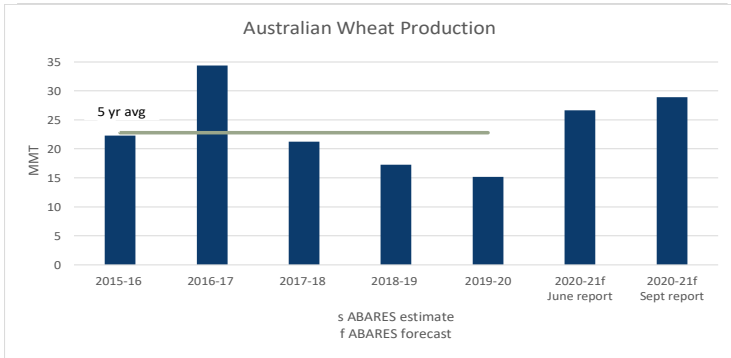
### ASX GRAIN SPREAD

Historically global grain markets are closely correlated, recently ASX Wheat prices have risen whilst other markets remained level.

### ASX JAN WHEAT minus CBOT DEC WHEAT (AUD/MT)





Source:Bloomberg



Source: ABARES 2015 , Australian crop report, Australian Bureau of Agricultural and Resource Economics and Services, Canberra, December, CC by 3.0 licensed under a Creative Commons Attribution 3.0 Australia License available from <http://creativecommons.org/licenses/by/3.0/au/legalcode>

**Further Information**

Email [grainfutures@asx.com.au](mailto:grainfutures@asx.com.au)  
 Visit [asx.com.au/grainfutures](http://asx.com.au/grainfutures)  
 Live Market Prices [asxgrains.com.au](http://asxgrains.com.au)

 Follow us @ASX  
 Follow us on LinkedIn

This document provides general information only and may be subject to change at any time without notice. ASX Pty Limited ABN 42 004 523 782. All rights reserved 2020. Operations Pty Limited (ABN 42 004 523 782) and its related bodies corporate ('ASX') make no representation or warranty with respect to the accuracy, reliability or completeness of this information. To the extent permitted by law, ASX and its employees, officers and contractors shall not be liable for any loss or damage arising in any way, including by way of negligence, from or in connection with any information provided or omitted, or from anyone acting or refraining to act in reliance on this information. The trademarks listed below are trademarks of ASX. Where a mark is indicated as a registered mark it is registered in Australia and may also be registered in other countries. Nothing contained in this document should be construed as being any license or right of use of any trade mark contained within the document. ASX Trade24®. © Copyright 2020